

Excellent Integrated System Limited

Stocking Distributor

Click to view price, real time Inventory, Delivery & Lifecycle Information:

[Molex Connector Corporation](#)

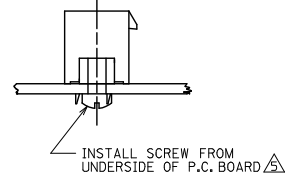
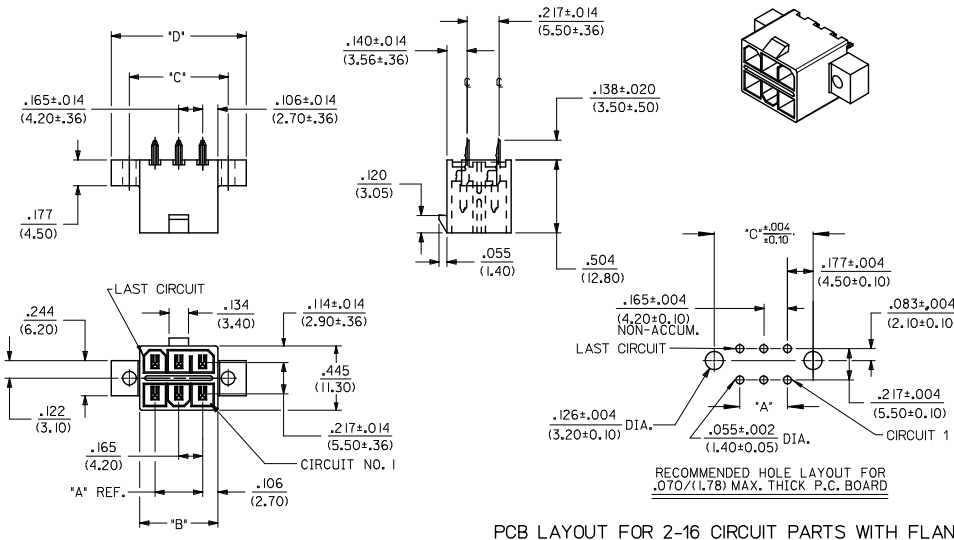
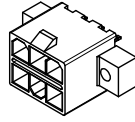
[15-97-7082](#)

For any questions, you can email us directly:

sales@integrated-circuit.com

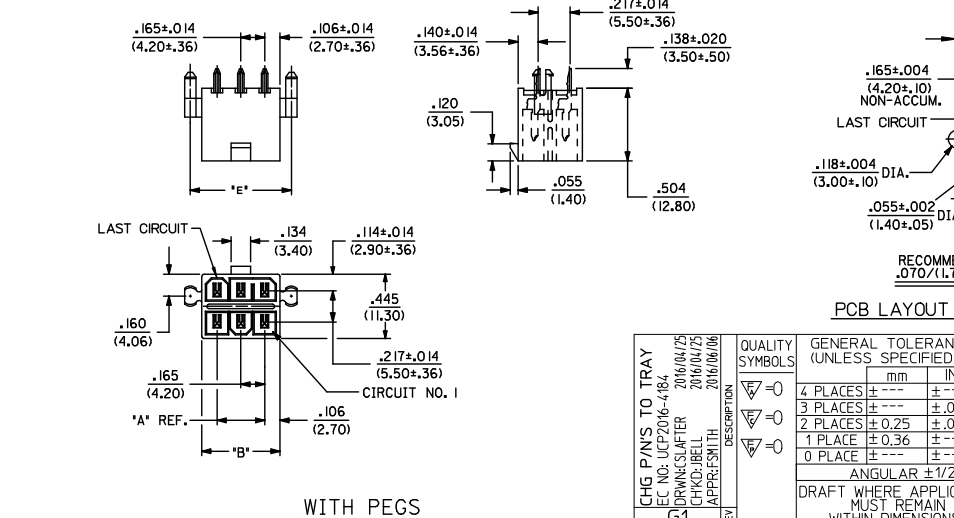
NOTES:

- HOUSING MAT'L.: POLYESTER, UNFILLED, 94V-0, COLOR: BLACK, TERMINAL MATERIAL: BRASS ALLOY
- PLATING:
 - .000035/(.00090) MIN. BRIGHT TIN OVER .000020/(.00050) MIN. COPPER.
 - .000030/(.00076) MIN. SELECT GOLD AND .000100/(.00254) MIN. SELECT MATTE TIN OVER .000050/(.00127) MIN. NICKEL OVERALL.
- PRODUCT SPECIFICATION PS-5556-003
- PACKAGING SPECIFICATION: BULK PER PK-30069-001, TRAY PER 300690000-PK
- PART IS DESIGNED FOR USE WITH #4 OR M3 SELF TAPPING SCREWS.
- PART MATES WITH RECEPTACLE 30067-*
- THIS PART CONFORMS TO CLASS 'B' REQUIREMENTS OF COSMETIC SPECIFICATION PS-45499-002.



PCB LAYOUT FOR 2-16 CIRCUIT PARTS WITH FLANGES

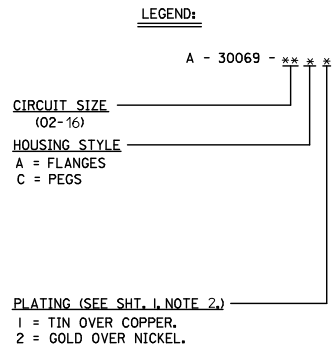
RECOMMENDED INSTALLATION OF HEADER TO P.C. BOARD



PCB LAYOUT FOR 2-16 CIRCUIT PARTS WITH PEGS

CHG P/NS TO TRAY EC NO: UCP2016-4184 DRAWN BY: JRF CHECKED BY: GEP APPROVED BY: F SMITH DATE: 2016/04/29 DATE: 2016/04/29 DATE: 2012/03/08	QUALITY SYMBOLS DESCRIPTION REV	GENERAL TOLERANCES (UNLESS SPECIFIED)		DIMENSION STYLE		SCALE	DESIGN UNITS	THIRD ANGLE PROJECTION	
		mm	INCH	IN/MM		2:1	METRIC		
		4 PLACES ± .010	± .010	DRAWN BY	DATE	TITLE			
		3 PLACES ± .010	± .010	CHECKED BY	DATE	MINI-FIT T.P.A. VERTICAL HEADER ASSEMBLY			
2 PLACES ± 0.25	± .014	GEP	9/19/91	SDA-30069-**** DOCUMENT NO.					
1 PLACE ± 0.36	± .010	APPROVED BY	DATE						
0 PLACE ± .010	± .010	F SMITH	2012/03/08	SEE CHARTS		SHEET NO. 1 OF 2			
ANGULAR ± 1/2°		MATERIAL NO.		THIS DRAWING CONTAINS INFORMATION THAT IS PROPRIETARY TO MOLEX INCORPORATED AND SHOULD NOT BE USED WITHOUT WRITTEN PERMISSION					

TIN-PLATED ASSEMBLIES WITH PEGS								GOLD-PLATED ASSEMBLIES WITH PEGS						
CKT. SIZE	ENG. NO.	EDP. NO.	DIM. 'A'	DIM. 'B'	DIM. 'E'	DIM. 'D'	PACKAGING	ENG. NO.	EDP. NO.	DIM. 'A'	DIM. 'B'	DIM. 'E'	DIM. 'D'	PACKAGING
2	A-30069-02C1	15-97-7023	—	.213 (5.40)	.370 (9.40)	—	BULK	A-30069-02C2	15-97-7025	—	.213 (5.40)	.370 (9.40)	—	BULK
4	A-30069-04C1	15-97-7043	.165 (4.20)	.378 (9.60)	.535 (13.60)	—	BULK	A-30069-04C2	15-97-7045	.165 (4.20)	.378 (9.60)	.535 (13.60)	—	BULK
6	A-30069-06C1	15-97-7063	.331 (8.40)	.543 (13.80)	.701 (17.80)	—	BULK	A-30069-06C2	15-97-7065	.331 (8.40)	.543 (13.80)	.701 (17.80)	—	BULK
8	A-30069-08C1	15-97-7083	.496 (12.60)	.709 (18.00)	.866 (22.00)	—	BULK	A-30069-08C2	15-97-7085	.496 (12.60)	.709 (18.00)	.866 (22.00)	—	BULK
10	A-30069-10C1	15-97-7103	.661 (16.80)	.874 (22.20)	1.031 (26.20)	—	BULK	A-30069-10C2	15-97-7105	.661 (16.80)	.874 (22.20)	1.031 (26.20)	—	TRAY
12	A-30069-12C1	15-97-7123	.827 (21.00)	1.039 (26.40)	1.197 (30.40)	—	BULK	A-30069-12C2	15-97-7125	.827 (21.00)	1.039 (26.40)	1.197 (30.40)	—	TRAY
14	A-30069-14C1	NOT TOOLED	.992 (25.20)	1.205 (30.60)	1.362 (34.60)	—	BULK	A-30069-14C2	NOT TOOLED	.992 (25.20)	1.205 (30.60)	1.362 (34.60)	—	TRAY
16	A-30069-16C1	NOT TOOLED	1.157 (29.40)	1.370 (34.80)	1.528 (38.80)	—	BULK	A-30069-16C2	15-97-7165	1.157 (29.40)	1.370 (34.80)	1.528 (38.80)	—	TRAY



TIN-PLATED ASSEMBLIES WITH FLANGES								GOLD-PLATED ASSEMBLIES WITH FLANGES						
CKT. SIZE	ENG. NO.	EDP. NO.	DIM. 'A'	DIM. 'B'	DIM. 'C'	DIM. 'D'	PACKAGING	ENG. NO.	EDP. NO.	DIM. 'A'	DIM. 'B'	DIM. 'C'	DIM. 'D'	PACKAGING
2	A-30069-02A1	15-97-7022	—	.213 (5.40)	.354 (9.00)	.606 (15.40)	BULK	A-30069-02A2	15-97-7024	—	.213 (5.40)	.354 (9.00)	.606 (15.40)	BULK
4	A-30069-04A1	15-97-7042	.165 (4.20)	.378 (9.60)	.520 (13.20)	.772 (19.60)	BULK	A-30069-04A2	15-97-7044	.165 (4.20)	.378 (9.60)	.520 (13.20)	.772 (19.60)	BULK
6	A-30069-06A1	15-97-7062	.331 (8.40)	.543 (13.80)	.685 (17.40)	.937 (23.80)	BULK	A-30069-06A2	15-97-7064	.331 (8.40)	.543 (13.80)	.685 (17.40)	.937 (23.80)	BULK
8	A-30069-08A1	15-97-7082	.496 (12.60)	.709 (18.00)	.850 (21.60)	1.102 (28.00)	BULK	A-30069-08A2	15-97-7084	.496 (12.60)	.709 (18.00)	.850 (21.60)	1.102 (28.00)	BULK
10	A-30069-10A1	15-97-7102	.661 (16.80)	.874 (22.20)	1.016 (25.80)	1.268 (32.20)	BULK	A-30069-10A2	15-97-7104	.661 (16.80)	.874 (22.20)	1.016 (25.80)	1.268 (32.20)	BULK
12	A-30069-12A1	15-97-7122	.827 (21.00)	1.039 (26.40)	1.181 (30.00)	1.433 (36.40)	BULK	A-30069-12A2	15-97-7124	.827 (21.00)	1.039 (26.40)	1.181 (30.00)	1.433 (36.40)	BULK
14	A-30069-14A1	NOT TOOLED	.992 (25.20)	1.205 (30.60)	1.346 (34.20)	1.598 (40.60)	BULK	A-30069-14A2	NOT TOOLED	.992 (25.20)	1.205 (30.60)	1.346 (34.20)	1.598 (40.60)	BULK
16	A-30069-16A1	15-97-7162	1.157 (29.40)	1.370 (34.80)	1.512 (38.40)	1.764 (44.80)	BULK	A-30069-16A2	15-97-7164	1.157 (29.40)	1.370 (34.80)	1.512 (38.40)	1.764 (44.80)	BULK

SEE SHEET 1 IEC NO: UCP2016-4164 DRAWN BY: AFTER 2016/04/29 CHKD: BELL 2016/04/29 APPR: SMITH 2016/06/06	QUALITY SYMBOLS ∇=0 ∇=0 ∇=0	GENERAL TOLERANCES (UNLESS SPECIFIED) mm INCH 4 PLACES ± --- ± --- 3 PLACES ± --- ± .010 2 PLACES ± 0.25 ± .014 1 PLACE ± 0.36 ± --- 0 PLACE ± --- ± ---	DIMENSION STYLE IN/MM DRAWN BY: R J F DATE: 9/19/91 CHECKED BY: GEP DATE: 9/19/91 APPROVED BY: F SMITH DATE: 2012/03/08	SCALE: 1:1 DESIGN UNITS: METRIC THIRD ANGLE PROJECTION	TITLE: MINI-FIT T.P.A. VERTICAL HEADER ASSEMBLY	molex	MATERIAL NO. SEE CHART	DOCUMENT NO. SDA-30069-****	SHEET NO. 2 OF 2		
		ANGULAR ±1/2°	DRAFT WHERE APPLICABLE MUST REMAIN WITHIN DIMENSIONS	THIS DRAWING CONTAINS INFORMATION THAT IS PROPRIETARY TO MOLEX INCORPORATED AND SHOULD NOT BE USED WITHOUT WRITTEN PERMISSION							
		REV: G1	SIZE: C	THIS DRAWING CONTAINS INFORMATION THAT IS PROPRIETARY TO MOLEX INCORPORATED AND SHOULD NOT BE USED WITHOUT WRITTEN PERMISSION							
		12	11	10	9	8	7	6	5	4	3