

Excellent Integrated System Limited

Stocking Distributor

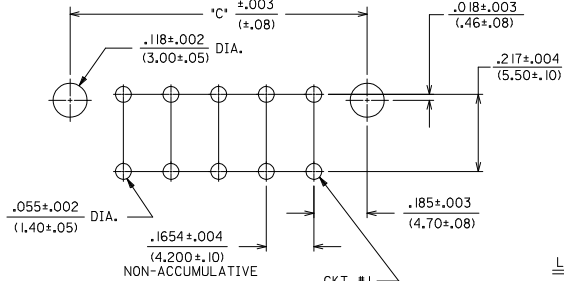
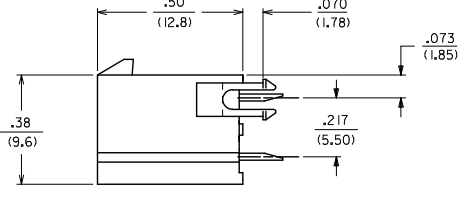
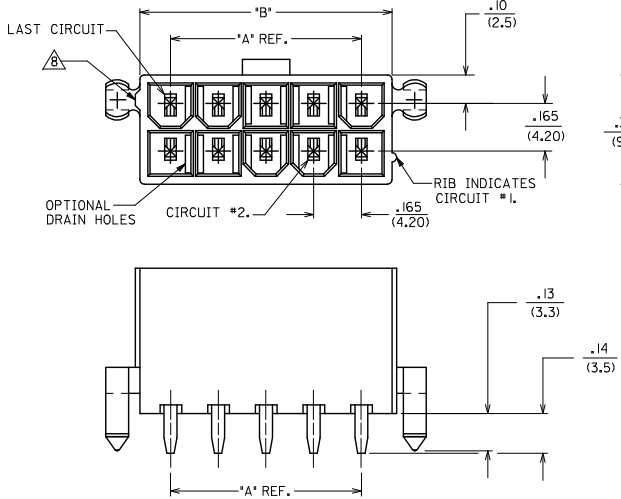
Click to view price, real time Inventory, Delivery & Lifecycle Information:

[Molex Connector Corporation](#)
[0039299023](#)

For any questions, you can email us directly:

sales@integrated-circuit.com

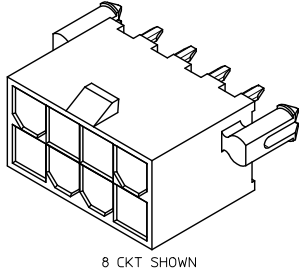
13 12 11 10 9 8 7 6 5 4 3 2 1



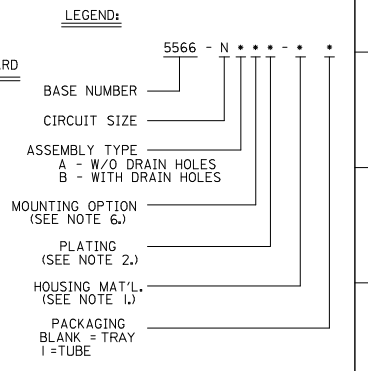
CIRCUIT SIZE	DIM. 'A'	DIM. 'B'	DIM. 'C'
2	—	.21 (5.4)	.370 (9.40)
4	.17 (4.2)	.38 (9.6)	.535 (13.60)
6	.33 (8.4)	.54 (13.8)	.701 (17.80)
8	.50 (12.6)	.71 (18.0)	.866 (22.00)
10	.66 (16.8)	.87 (22.2)	1.031 (26.20)
12	.83 (21.0)	1.04 (26.4)	1.197 (30.40)
14	.99 (25.2)	1.20 (30.6)	1.362 (34.60)
16	1.16 (29.4)	1.37 (34.8)	1.528 (38.80)
18	1.32 (33.6)	1.54 (39.0)	1.693 (43.00)
20	1.49 (37.8)	1.70 (43.2)	1.858 (47.20)
22	1.65 (42.0)	1.87 (47.4)	2.024 (51.40)
24	1.82 (46.2)	2.03 (51.6)	2.189 (55.60)

- NOTES:**
- HOUSING MATERIAL:
 - *BLANK* - NYLON 6/6, UNFILLED U.L. 94V-2, COLOR: NATURAL.
 - 210 - NYLON 6/6, UNFILLED U.L. 94V-0, COLOR: NATURAL.
 - BL - NYLON 6/6, UNFILLED U.L. 94V-2, COLOR: BLACK.
 - TERMINAL MATERIAL: BRASS
 - TERMINAL PLATING:
 - *BLANK* - .000035/(.00090) MIN. TIN OVER .000020/(.00050) MIN. COPPER.
 - GS - .000030/(.00076) MIN. SELECT GOLD .000100/(.00254) MIN. SELECT MATTE TIN OVER .000050/(.00127) MIN. NICKEL OVERALL.
 - GS2 - .000015/(.00038) MIN. SELECT GOLD AND .000100/(.00254) MIN. SELECT MATTE TIN OVER .000050/(.00127) MIN. NICKEL OVERALL.
 - S - .000100/(.00254) MIN. TIN OVER .000050/(.00127) MIN. NICKEL.
 - PRODUCT SPECIFICATION: PS-5556-001
 - PACKAGING: SEE CHARTS
 - PART MATES WITH MINI-FIT JR. RECEPTACLE #5557.
 - MOUNTING OPTIONS:
 - *BLANK* - NO MOUNTING (SEE SD-5566-002 DWG.)
 - 2 - PEG MOUNT
 - PART CONFORMS TO CLASS 'B' REQUIREMENTS OF COSMETIC SPECIFICATION PS-45499-002
 - ANTI-SHINGLING RIB MAY OR MAY NOT APPEAR ON HOUSINGS.
 - CONNECTORS ARE NOT TO BE MATED OR UNMATED WHILE CIRCUITS ARE LIVE.
 - PARTS ARE NOT DESIGNED FOR CURRENT SHARING.

RECOMMENDED HOLE LAYOUT FOR .070/(1.78) MAX. THICK P. C. BOARD
VIEWED FROM COMPONENT SIDE

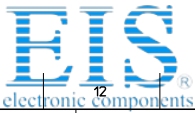


8 CKT SHOWN



OBS P/NS EC NO: UCP2014-2543 DRAWING/ENGR: 2013/12/16 CHKD/BELL: 2013/12/16 APPR/SMITH: 2014/01/10 REV: R6	QUALITY SYMBOLS ∇=0 ∇=0 ∇=0	GENERAL TOLERANCES (UNLESS SPECIFIED)		DIMENSION STYLE		SCALE	DESIGN UNITS	THIRD ANGLE PROJECTION	
				IN/MM		4:1	METRIC		
		4 PLACES ± --- ± ---	mm	INCH	DRAWN BY	DATE	TITLE		
		3 PLACES ± --- ± .015			RJF	8/19/87	MINI-FIT JR. VERTICAL HEADER ASSEMBLIES WITH MOUNTING PEGS		
2 PLACES ± 0.38 ± .020			CHECKED BY	DATE	MOLEX INCORPORATED				
1 PLACE ± 0.50 ± ---			GT	8/19/87	MOLEX INCORPORATED				
ANGULAR ± 1/2°		APPROVED BY		DATE	DOCUMENT NO.				
DRAFT WHERE APPLICABLE MUST REMAIN WITHIN DIMENSIONS		SMITH		2012/01/10	SDA-5566-N*2*-*				
		MATERIAL NO.		MOLEX	SHEET NO.				
		SEE SHTS 2-4		INCORPORATED AND SHOULD NOT BE USED WITHOUT WRITTEN PERMISSION			1 OF 4		

1b_frame_C_P_AM_T Rev. F 2009/06/18 12 11 10 9 8 7 6 5 4 3 2 1



Distributor of Molex Connector Corporation: Excellent Integrated System Limited

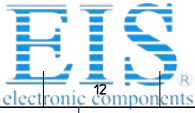
Datasheet of 0039299023 - CONN HEADER 2POS 4.2MM VERT TIN

Contact us: sales@integrated-circuit.com Website: www.integrated-circuit.com

J			I			H		
PLATING:	35 M.I. TIN		PLATING:	35 M.I. TIN		PLATING:	30 M.I. GOLD	
DRAIN HOLES:	WITHOUT DRAIN HOLES		DRAIN HOLES:	WITHOUT DRAIN HOLES		DRAIN HOLES:	WITHOUT DRAIN HOLES	
MTG. OPTION:	WITH PEGS		MTG. OPTION:	WITH PEGS		MTG. OPTION:	WITH PEGS	
HOUSING MAT'L:	NYLON 6/6 94V-2 NATURAL		HOUSING MAT'L:	NYLON 6/6 94V-0 NATURAL		HOUSING MAT'L:	NYLON 6/6 94V-2 NATURAL	
PACKAGING:	PK-5566-001		PACKAGING:	PK-5566-001		PACKAGING:	PK-5566-001	
PART NO.	ENG NO.	CKTS	PART NO.	ENG NO.	CKTS	PART NO.	ENG NO.	CKTS
39-29-9023	5566 -02A2	2	39-29-9027	5566 -02A2-2IO	2	39-29-9025	5566 -02A2GS	2
39-29-9043	5566 -04A2	4	39-29-9047	5566 -04A2-2IO	4	39-29-9045	5566 -04A2GS	4
39-29-9063	5566 -06A2	6	39-29-9067	5566 -06A2-2IO	6	39-29-9065	5566 -06A2GS	6
39-29-9083	5566 -08A2	8	39-29-9087	5566 -08A2-2IO	8	39-29-9085	5566 -08A2GS	8
39-29-9103	5566 -10A2	10	39-29-9107	5566 -10A2-2IO	10	39-29-9105	5566 -10A2GS	10
39-29-9123	5566 -12A2	12	39-29-9127	5566 -12A2-2IO	12	39-29-9125	5566 -12A2GS	12
39-29-9143	5566 -14A2	14	39-29-9147	5566 -14A2-2IO	14	39-29-9145	5566 -14A2GS	14
39-29-9163	5566 -16A2	16	39-29-9167	5566 -16A2-2IO	16	39-29-9165	5566 -16A2GS	16
39-29-9183	5566 -18A2	18	39-29-9187	5566 -18A2-2IO	18	39-29-9185	5566 -18A2GS	18
39-29-9203	5566 -20A2	20	39-29-9207	5566 -20A2-2IO	20	39-29-9205	5566 -20A2GS	20
39-29-9223	5566 -22A2	22	39-29-9227	5566 -22A2-2IO	22	39-29-9225	5566 -22A2GS	22
39-29-9243	5566 -24A2	24	39-29-9247	5566 -24A2-2IO	24	39-29-9245	5566 -24A2GS	24

G			F			E		
PLATING:	35 M.I. TIN		PLATING:	35 M.I. TIN		PLATING:	30 M.I. GOLD	
DRAIN HOLES:	WITH DRAIN HOLES		DRAIN HOLES:	WITH DRAIN HOLES		DRAIN HOLES:	WITH DRAIN HOLES	
MTG. OPTION:	WITH PEGS		MTG. OPTION:	WITH PEGS		MTG. OPTION:	WITH PEGS	
HOUSING MAT'L:	NYLON 6/6 94V-2 NATURAL		HOUSING MAT'L:	NYLON 6/6 94V-0 NATURAL		HOUSING MAT'L:	NYLON 6/6 94V-2 NATURAL	
PACKAGING:	PK-5566-001		PACKAGING:	PK-5566-001		PACKAGING:	PK-5566-001	
PART NO.	ENG NO.	CKTS	PART NO.	ENG NO.	CKTS	PART NO.	ENG NO.	CKTS
39-29-9042	5566 -02B2	2	39-29-9046	5566 -02B2-2IO	2	39-29-9044	5566 -02B2GS	2
39-29-9062	5566 -04B2	4	39-29-9066	5566 -04B2-2IO	4	39-29-9064	5566 -04B2GS	4
39-29-9082	5566 -06B2	6	39-29-9086	5566 -06B2-2IO	6	39-29-9084	5566 -06B2GS	6
39-29-9102	5566 -08B2	8	39-29-9106	5566 -08B2-2IO	8	39-29-9104	5566 -08B2GS	8
39-29-9122	5566 -10B2	10	39-29-9126	5566 -10B2-2IO	10	39-29-9124	5566 -10B2GS	10
39-29-9142	5566 -12B2	12	39-29-9146	5566 -12B2-2IO	12	39-29-9144	5566 -12B2GS	12
39-29-9162	5566 -14B2	14	39-29-9166	5566 -14B2-2IO	14	39-29-9164	5566 -14B2GS	14
39-29-9182	5566 -16B2	16	39-29-9186	5566 -16B2-2IO	16	39-29-9184	5566 -16B2GS	16
39-29-9202	5566 -18B2	18	39-29-9206	5566 -18B2-2IO	18	39-29-9204	5566 -18B2GS	18
39-29-9222	5566 -20B2	20	39-29-9226	5566 -20B2-2IO	20	39-29-9224	5566 -20B2GS	20
39-29-9242	5566 -22B2	22	39-29-9246	5566 -22B2-2IO	22	39-29-9244	5566 -22B2GS	22

SEE SHEET 1 IEC NO: UCP2014-2543 DRAWING NO: 2013/12/16 CHKD: BELL APPR: SMITH R6	QUALITY SYMBOLS ∇=0 ∇=0 ∇=0	GENERAL TOLERANCES (UNLESS SPECIFIED) mm INCH 4 PLACES ± --- ± --- 3 PLACES ± --- ± 0.15 2 PLACES ± 0.38 ± 0.20 1 PLACE ± 0.50 ± --- ANGULAR ± 1/2°	DIMENSION STYLE IN/MM DRAWN BY DATE R/JF 8/19/87 CHECKED BY DATE G/T 8/19/87 APPROVED BY DATE F/SMITH 2012/01/10	SCALE 1:1	DESIGN UNITS METRIC	THIRD ANGLE PROJECTION	TITLE MINI-FIT JR. VERTICAL HEADER ASSEMBLIES WITH MOUNTING PEGS	MOLEX INCORPORATED	MATERIAL NO. SEE CHART	DOCUMENT NO. SDA-5566-N*2*-*	SHEET NO. 2 OF 4



Distributor of Molex Connector Corporation: Excellent Integrated System Limited

Datasheet of 0039299023 - CONN HEADER 2POS 4.2MM VERT TIN

Contact us: sales@integrated-circuit.com Website: www.integrated-circuit.com

Table with columns for PLATING, DRAIN HOLES, MTG. OPTION, HOUSING MAT'L, PACKAGING, PART NO., ENG NO., and CKTS. It lists various part numbers and their specifications for different plating and housing options.

Table with columns for PLATING, DRAIN HOLES, MTG. OPTION, HOUSING MAT'L, PACKAGING, PART NO., ENG NO., and CKTS. It lists various part numbers and their specifications for different plating and housing options.

Table with columns for PLATING, DRAIN HOLES, MTG. OPTION, HOUSING MAT'L, PACKAGING, PART NO., ENG NO., and CKTS. It lists various part numbers and their specifications for different plating and housing options.

Technical drawing information including: SEE SHEET 1, EC NO: UCP2014-2543, DRAWING NO: 2013/12/16, CHKD: BELL, APPR: SMITH, 2014/01/10, QUALITY SYMBOLS, GENERAL TOLERANCES, DIMENSION STYLE, SCALE, DESIGN UNITS, THIRD ANGLE PROJECTION, TITLE: MINI-FIT JR. VERTICAL HEADER ASSEMBLIES WITH MOUNTING PEGS, APPROVED BY: F SMITH, DATE: 2012/01/10, MATERIAL NO., DOCUMENT NO., MOLEX INCORPORATED, SDA-5566-N*2*-*, SHEET NO. 3 OF 4, DRAFT WHERE APPLICABLE MUST REMAIN WITHIN DIMENSIONS, SEE CHART, THIS DRAWING CONTAINS INFORMATION THAT IS PROPRIETARY TO MOLEX INCORPORATED AND SHOULD NOT BE USED WITHOUT WRITTEN PERMISSION.

