

## **Excellent Integrated System Limited**

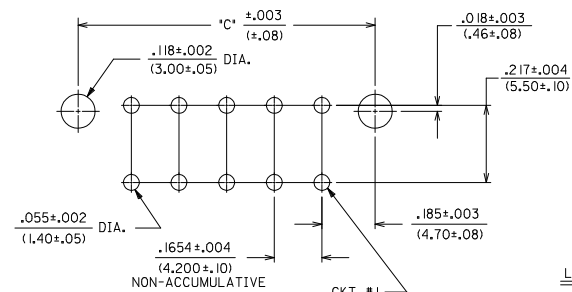
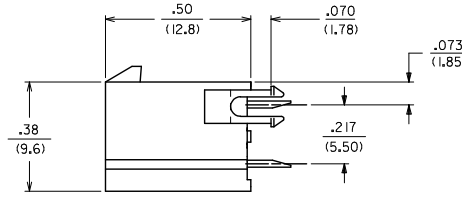
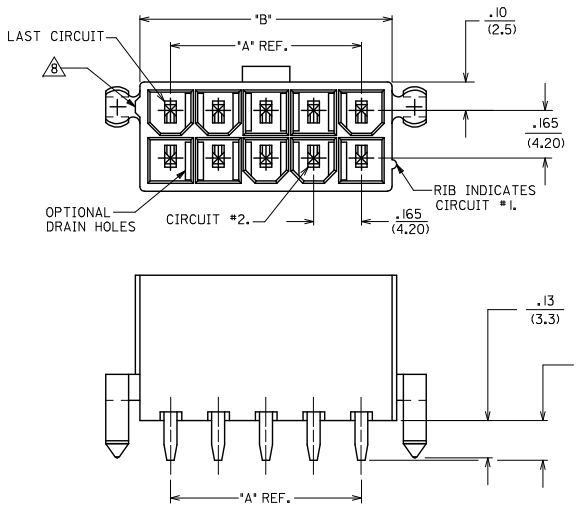
Stocking Distributor

Click to view price, real time Inventory, Delivery & Lifecycle Information:

[Molex Connector Corporation](#)  
[39-29-9243](#)

For any questions, you can email us directly:  
[sales@integrated-circuit.com](mailto:sales@integrated-circuit.com)

13 12 11 10 9 8 7 6 5 4 3 2 1

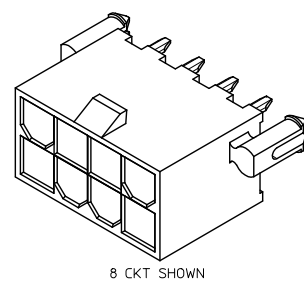


CIRCUIT SIZE	DIM. 'A'	DIM. 'B'	DIM. 'C'
2	—	.21 (5.4)	.370 (9.40)
4	.17 (4.2)	.38 (9.6)	.535 (13.60)
6	.33 (8.4)	.54 (13.8)	.701 (17.80)
8	.50 (12.6)	.71 (18.0)	.866 (22.00)
10	.66 (16.8)	.87 (22.2)	1.031 (26.20)
12	.83 (21.0)	1.04 (26.4)	1.197 (30.40)
14	.99 (25.2)	1.20 (30.6)	1.362 (34.60)
16	1.16 (29.4)	1.37 (34.8)	1.528 (38.80)
18	1.32 (33.6)	1.54 (39.0)	1.693 (43.00)
20	1.49 (37.8)	1.70 (43.2)	1.858 (47.20)
22	1.65 (42.0)	1.87 (47.4)	2.024 (51.40)
24	1.82 (46.2)	2.03 (51.6)	2.189 (55.60)

**NOTES:**

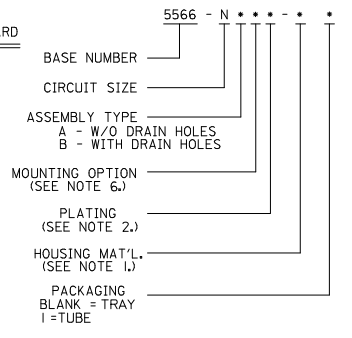
- HOUSING MATERIAL:
  - "BLANK" - NYLON 6/6, UNFILLED U.L. 94V-2, COLOR: NATURAL.
  - 210 - NYLON 6/6, UNFILLED U.L. 94V-0, COLOR: NATURAL.
  - BL - NYLON 6/6, UNFILLED U.L. 94V-2, COLOR: BLACK.
- TERMINAL MATERIAL: BRASS
- TERMINAL PLATING:
  - "BLANK" - .000035/(.00090) MIN. TIN OVER .000020/(.00050) MIN. COPPER.
  - GS - .000030/(.00076) MIN. SELECT GOLD .000100/(.00254) MIN. SELECT MATTE TIN OVER .000050/(.00127) MIN. NICKEL OVERALL.
  - GS2 - .000015/(.00038) MIN. SELECT GOLD AND .000100/(.00254) MIN. SELECT MATTE TIN OVER .000050/(.00127) MIN. NICKEL OVERALL.
  - S - .000100/(.00254) MIN. TIN OVER .000050/(.00127) MIN. NICKEL.
- PRODUCT SPECIFICATION: PS-5556-001
- PACKAGING: SEE CHARTS
- PART MATES WITH MINI-FIT JR. RECEPTACLE #5557.
- MOUNTING OPTIONS:
  - "BLANK" - NO MOUNTING (SEE SD-5566-002 DWG.)
  - 2 - PEG MOUNT
- PART CONFORMS TO CLASS "B" REQUIREMENTS OF COSMETIC SPECIFICATION PS-45499-002
- ANTI-SHINGLING RIB MAY OR MAY NOT APPEAR ON HOUSINGS.
- CONNECTORS ARE NOT TO BE MATED OR UNMATED WHILE CIRCUITS ARE LIVE.
- PARTS ARE NOT DESIGNED FOR CURRENT SHARING.

RECOMMENDED HOLE LAYOUT FOR .070/(1.78) MAX. THICK P. C. BOARD  
VIEWED FROM COMPONENT SIDE



8 CKT SHOWN

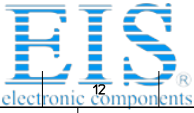
**LEGEND:**



OBS P/NS EC NO: UCP2014-2543 DRAWING/ENGR: 2013/12/16 CHKD/BELL: 2013/12/16 APPR/SMITH: 2014/01/10 REV: R6	QUALITY SYMBOLS	GENERAL TOLERANCES (UNLESS SPECIFIED)	DIMENSION STYLE	SCALE	DESIGN UNITS	THIRD ANGLE PROJECTION
	▽=0	4 PLACES ± --- ± ---	IN/MM	4:1	METRIC	⊙
	▽=0	3 PLACES ± --- ± .015	mm	DRAWN BY: R J F	DATE: 8/19/87	TITLE: MINI-FIT JR. VERTICAL HEADER ASSEMBLIES WITH MOUNTING PEGS
	▽=0	2 PLACES ± 0.38 ± .020	INCH	CHECKED BY: GT	DATE: 8/19/87	MATERIAL NO. F SMITH
		1 PLACE ± 0.50 ± ---	ANGULAR ± 1/2°	APPROVED BY: F SMITH	DATE: 2012/01/10	MOLEX INCORPORATED
		DRAFT WHERE APPLICABLE MUST REMAIN WITHIN DIMENSIONS	MATERIAL NO. SIZE C	SEE SHTS 2-4	DOCUMENT NO. SDA-5566-N*2*-*	SHEET NO. 1 OF 4
			THIS DRAWING CONTAINS INFORMATION THAT IS PROPRIETARY TO MOLEX INCORPORATED AND SHOULD NOT BE USED WITHOUT WRITTEN PERMISSION			

ib\_frame\_C.P.\_AM.T 12 11 10 9 8 7 6 5 4 3 2 1  
Rev. F 2009/06/18





# Distributor of Molex Connector Corporation: Excellent Integrated System Limited

## Datasheet of 39-29-9243 - CONN HEADER 24POS 4.2MM VERT TIN

Contact us: sales@integrated-circuit.com Website: www.integrated-circuit.com

PLATING: 100 M.I. BRIGHT TIN		PLATING: 100 M.I. BRIGHT TIN		PLATING: 15 M.I. SELECT GOLD		PLATING: 15 M.I. SELECT GOLD	
DRAIN HOLES: WITHOUT DRAIN HOLES		DRAIN HOLES: WITHOUT DRAIN HOLES		DRAIN HOLES: WITHOUT DRAIN HOLES		DRAIN HOLES: WITHOUT DRAIN HOLES	
MTG. OPTION: WITH PEGS		MTG. OPTION: WITH PEGS		MTG. OPTION: WITH PEGS		MTG. OPTION: WITH PEGS	
HOUSING MAT'L: NYLON 6/6 94V-2 NATURAL		HOUSING MAT'L: NYLON 6/6 94V-0 NATURAL		HOUSING MAT'L: NYLON 6/6 94V-2 NATURAL		HOUSING MAT'L: NYLON 6/6 94V-0 NATURAL	
PACKAGING: PK-5566-001		PACKAGING: PK-5566-001		PACKAGING: PK-5566-001		PACKAGING: PK-5566-001	
PART NO.	ENG NO.	CKTS	PART NO.	ENG NO.	CKTS	PART NO.	ENG NO.
39-30-6025	5566 -02A2S	2	39-30-6026	5566 -02A2S-210	2	39-30-0026	5566 -02A2GS2
39-30-6045	5566 -04A2S	4	39-30-6046	5566 -04A2S-210	4	39-30-0046	5566 -04A2GS2
39-30-6065	5566 -06A2S	6	39-30-6066	5566 -06A2S-210	6	39-30-0066	5566 -06A2GS2
39-30-6085	5566 -08A2S	8	39-30-6086	5566 -08A2S-210	8	39-30-0086	5566 -08A2GS2
39-30-6105	5566 -10A2S	10	39-30-6106	5566 -10A2S-210	10	39-30-0106	5566 -10A2GS2
39-30-6125	5566 -12A2S	12	39-30-6126	5566 -12A2S-210	12	39-30-0126	5566 -12A2GS2
39-30-6145	5566 -14A2S	14	39-30-6146	5566 -14A2S-210	14	39-30-0146	5566 -14A2GS2
39-30-6165	5566 -16A2S	16	39-30-6166	5566 -16A2S-210	16	39-30-0166	5566 -16A2GS2
39-30-6185	5566 -18A2S	18	39-30-6186	5566 -18A2S-210	18	39-30-0186	5566 -18A2GS2
39-30-6205	5566 -20A2S	20	39-30-6206	5566 -20A2S-210	20	39-30-0206	5566 -20A2GS2
39-30-6225	5566 -22A2S	22	39-30-6226	5566 -22A2S-210	22	39-30-0226	5566 -22A2GS2
39-30-6245	5566 -24A2S	24	39-30-6246	5566 -24A2S-210	24	39-30-0246	5566 -24A2GS2

PLATING: 100 M.I. BRIGHT TIN		PLATING: 100 M.I. BRIGHT TIN					
DRAIN HOLES: WITH DRAIN HOLES		DRAIN HOLES: WITH DRAIN HOLES					
MTG. OPTION: WITH PEGS		MTG. OPTION: WITH PEGS					
HOUSING MAT'L: NYLON 6/6 94V-2 NATURAL		HOUSING MAT'L: NYLON 6/6 94V-0 NATURAL					
PACKAGING: PK-5566-001		PACKAGING: PK-5566-001					
PART NO.	ENG NO.	CKTS	PART NO.	ENG NO.	CKTS		
39-30-6047	5566 -02B2S	2	39-30-6048	5566 -02B2S-210	2		
39-30-6067	5566 -04B2S	4	39-30-6068	5566 -04B2S-210	4		
39-30-6087	5566 -06B2S	6	39-30-6088	5566 -06B2S-210	6		
39-30-6107	5566 -08B2S	8	39-30-6108	5566 -08B2S-210	8		
39-30-6127	5566 -10B2S	10	39-30-6128	5566 -10B2S-210	10		
39-30-6147	5566 -12B2S	12	39-30-6148	5566 -12B2S-210	12		
39-30-6167	5566 -14B2S	14	39-30-6168	5566 -14B2S-210	14		
39-30-6187	5566 -16B2S	16	39-30-6188	5566 -16B2S-210	16		
39-30-6207	5566 -18B2S	18	39-30-6208	5566 -18B2S-210	18		
39-30-6227	5566 -20B2S	20	39-30-6228	5566 -20B2S-210	20		
39-30-6247	5566 -22B2S	22	39-30-6248	5566 -22B2S-210	22		

PLATING: 100 M.I. BRIGHT TIN		PLATING: 100 M.I. BRIGHT TIN					
DRAIN HOLES: WITH DRAIN HOLES		DRAIN HOLES: WITH DRAIN HOLES					
MTG. OPTION: WITH PEGS		MTG. OPTION: WITH PEGS					
HOUSING MAT'L: NYLON 6/6 94V-2 NATURAL		HOUSING MAT'L: NYLON 6/6 94V-0 NATURAL					
PACKAGING: PK-5566-001		PACKAGING: PK-5566-001					
PART NO.	ENG NO.	CKTS	PART NO.	ENG NO.	CKTS		
39-30-6047	5566 -02B2S	2	39-30-6048	5566 -02B2S-210	2		
39-30-6067	5566 -04B2S	4	39-30-6068	5566 -04B2S-210	4		
39-30-6087	5566 -06B2S	6	39-30-6088	5566 -06B2S-210	6		
39-30-6107	5566 -08B2S	8	39-30-6108	5566 -08B2S-210	8		
39-30-6127	5566 -10B2S	10	39-30-6128	5566 -10B2S-210	10		
39-30-6147	5566 -12B2S	12	39-30-6148	5566 -12B2S-210	12		
39-30-6167	5566 -14B2S	14	39-30-6168	5566 -14B2S-210	14		
39-30-6187	5566 -16B2S	16	39-30-6188	5566 -16B2S-210	16		
39-30-6207	5566 -18B2S	18	39-30-6208	5566 -18B2S-210	18		
39-30-6227	5566 -20B2S	20	39-30-6228	5566 -20B2S-210	20		
39-30-6247	5566 -22B2S	22	39-30-6248	5566 -22B2S-210	22		

<b>SEE SHEET 1</b> EC NO: UCP2014-2543 DRAWING NO: 2013/12/16 CHKD: BELL APPR: SMITH DATE: 2014/01/10	QUALITY SYMBOLS 	GENERAL TOLERANCES (UNLESS SPECIFIED)		DIMENSION STYLE		SCALE	DESIGN UNITS	THIRD ANGLE PROJECTION	
				IN/MM		1:1	METRIC		
		4 PLACES ± --- ± ---		DRAWN BY DATE		TITLE			
		3 PLACES ± --- ± 0.15		R/JF 8/19/87		MINI-FIT JR. VERTICAL HEADER ASSEMBLIES WITH MOUNTING PEGS			
2 PLACES ± 0.38 ± 0.20		CHECKED BY DATE		MOLEX INCORPORATED					
1 PLACE ± 0.50 ± ---		G/T 8/19/87		MATERIAL NO. DOCUMENT NO.					
ANGULAR ± 1/2°		APPROVED BY DATE		SDA-5566-N*2*-*					
		F/SMITH 2012/01/10		SHEET NO. 3 OF 4					
DRAFT WHERE APPLICABLE MUST REMAIN WITHIN DIMENSIONS		SEE CHART		THIS DRAWING CONTAINS INFORMATION THAT IS PROPRIETARY TO MOLEX INCORPORATED AND SHOULD NOT BE USED WITHOUT WRITTEN PERMISSION					



13 12 11 10 9 8 7 6 5 4 3 2 1

PLATING: 35 M.I. TIN			PLATING: 35 M.I. TIN			PLATING:			PLATING:		
DRAIN HOLES: WITHOUT DRAIN HOLES			DRAIN HOLES: WITHOUT DRAIN HOLES			DRAIN HOLES:			DRAIN HOLES:		
MTG. OPTION: WITH PEGS			MTG. OPTION: WITH PEGS			MTG. OPTION:			MTG. OPTION:		
HOUSING MAT'L: NYLON 6/6 94V-2 (BLACK)			HOUSING MAT'L: 94V-2 NATURAL			HOUSING MAT'L:			HOUSING MAT'L:		
PACKAGING: PK-5566-001			PACKAGING: TUBE			PACKAGING:			PACKAGING:		
PART NO.	ENG NO.	CKTS	PART NO.	ENG NO.	CKTS	PART NO.	ENG NO.	CKTS	PART NO.	ENG NO.	CKTS
39-31-9028	5566 -02A2-BL	2	39-34-8028	5566 -02A2-1	2	-	-	-	-	-	-
39-31-9048	5566 -04A2-BL	4	39-34-8048	5566 -04A2-1	4	-	-	-	-	-	-
39-31-9068	5566 -06A2-BL	6	39-34-8068	5566 -06A2-1	6	-	-	-	-	-	-
39-31-9088	5566 -08A2-BL	8	39-34-8088	5566 -08A2-1	8	-	-	-	-	-	-
39-31-9108	5566 -10A2-BL	10	39-34-8108	5566 -10A2-1	10	-	-	-	-	-	-
39-31-9128	5566 -12A2-BL	12	39-34-8128	5566 -12A2-1	12	-	-	-	-	-	-
39-31-9148	5566 -14A2-BL	14	39-34-8148	5566 -14A2-1	14	-	-	-	-	-	-
39-31-9168	5566 -16A2-BL	16	39-34-8168	5566 -16A2-1	16	-	-	-	-	-	-
39-31-9188	5566 -18A2-BL	18	39-34-8188	5566 -18A2-1	18	-	-	-	-	-	-
39-31-9208	5566 -20A2-BL	20	39-34-8208	5566 -20A2-1	20	-	-	-	-	-	-
39-31-9228	5566 -22A2-BL	22	39-34-8228	5566 -22A2-1	22	-	-	-	-	-	-
39-31-9248	5566 -24A2-BL	24	39-34-8248	5566 -24A2-1	24	-	-	-	-	-	-

PLATING:			PLATING:			PLATING:			PLATING:		
DRAIN HOLES:			DRAIN HOLES:			DRAIN HOLES:			DRAIN HOLES:		
MTG. OPTION:			MTG. OPTION:			MTG. OPTION:			MTG. OPTION:		
HOUSING MAT'L:			HOUSING MAT'L:			HOUSING MAT'L:			HOUSING MAT'L:		
PACKAGING:			PACKAGING:			PACKAGING:			PACKAGING:		
PART NO.	ENG NO.	CKTS	PART NO.	ENG NO.	CKTS	PART NO.	ENG NO.	CKTS	PART NO.	ENG NO.	CKTS
-	-	-	-	-	-	-	-	-	-	-	-
-	-	-	-	-	-	-	-	-	-	-	-
-	-	-	-	-	-	-	-	-	-	-	-
-	-	-	-	-	-	-	-	-	-	-	-
-	-	-	-	-	-	-	-	-	-	-	-
-	-	-	-	-	-	-	-	-	-	-	-
-	-	-	-	-	-	-	-	-	-	-	-
-	-	-	-	-	-	-	-	-	-	-	-
-	-	-	-	-	-	-	-	-	-	-	-
-	-	-	-	-	-	-	-	-	-	-	-
-	-	-	-	-	-	-	-	-	-	-	-
-	-	-	-	-	-	-	-	-	-	-	-
-	-	-	-	-	-	-	-	-	-	-	-
-	-	-	-	-	-	-	-	-	-	-	-
-	-	-	-	-	-	-	-	-	-	-	-
-	-	-	-	-	-	-	-	-	-	-	-
-	-	-	-	-	-	-	-	-	-	-	-
-	-	-	-	-	-	-	-	-	-	-	-
-	-	-	-	-	-	-	-	-	-	-	-
-	-	-	-	-	-	-	-	-	-	-	-

PLATING:			PLATING:			PLATING:			PLATING:		
DRAIN HOLES:			DRAIN HOLES:			DRAIN HOLES:			DRAIN HOLES:		
MTG. OPTION:			MTG. OPTION:			MTG. OPTION:			MTG. OPTION:		
HOUSING MAT'L:			HOUSING MAT'L:			HOUSING MAT'L:			HOUSING MAT'L:		
PACKAGING:			PACKAGING:			PACKAGING:			PACKAGING:		
PART NO.	ENG NO.	CKTS	PART NO.	ENG NO.	CKTS	PART NO.	ENG NO.	CKTS	PART NO.	ENG NO.	CKTS
-	-	-	-	-	-	-	-	-	-	-	-
-	-	-	-	-	-	-	-	-	-	-	-
-	-	-	-	-	-	-	-	-	-	-	-
-	-	-	-	-	-	-	-	-	-	-	-
-	-	-	-	-	-	-	-	-	-	-	-
-	-	-	-	-	-	-	-	-	-	-	-
-	-	-	-	-	-	-	-	-	-	-	-
-	-	-	-	-	-	-	-	-	-	-	-
-	-	-	-	-	-	-	-	-	-	-	-
-	-	-	-	-	-	-	-	-	-	-	-
-	-	-	-	-	-	-	-	-	-	-	-
-	-	-	-	-	-	-	-	-	-	-	-
-	-	-	-	-	-	-	-	-	-	-	-
-	-	-	-	-	-	-	-	-	-	-	-
-	-	-	-	-	-	-	-	-	-	-	-
-	-	-	-	-	-	-	-	-	-	-	-
-	-	-	-	-	-	-	-	-	-	-	-
-	-	-	-	-	-	-	-	-	-	-	-
-	-	-	-	-	-	-	-	-	-	-	-
-	-	-	-	-	-	-	-	-	-	-	-
-	-	-	-	-	-	-	-	-	-	-	-
-	-	-	-	-	-	-	-	-	-	-	-

13 12 11 10 9 8 7 6 5 4 3 2 1

SEE SHEET 1 EC NO: UCP2014-2543 DRAWING NO: 2013/12/16 CHKD: BELL APPR: SMITH 2014/01/06 R6	QUALITY SYMBOLS ∇=0 ∇=0 ∇=0	GENERAL TOLERANCES (UNLESS SPECIFIED)		DIMENSION STYLE IN/MM		SCALE 1:1	DESIGN UNITS METRIC	THIRD ANGLE PROJECTION	
		4 PLACES ± --- ± ---	mm	INCH	DRAWN BY RJF	DATE 8/19/87	TITLE MINI-FIT JR. VERTICAL HEADER ASSEMBLIES WITH MOUNTING PEGS		
		3 PLACES ± --- ± .015			CHECKED BY GT	DATE 8/19/87	MOLEX INCORPORATED		
		2 PLACES ± 0.38 ± .020			APPROVED BY F SMITH	DATE 2012/01/10	MATERIAL NO. SEE CHART	DOCUMENT NO. SDA-5566-N*2*-*	SHEET NO. 4 OF 4
1 PLACE ± 0.50 ± --- ANGULAR ± 1/2°				DRAFT WHERE APPLICABLE MUST REMAIN WITHIN DIMENSIONS				THIS DRAWING CONTAINS INFORMATION THAT IS PROPRIETARY TO MOLEX INCORPORATED AND SHOULD NOT BE USED WITHOUT WRITTEN PERMISSION	

13 12 11 10 9 8 7 6 5 4 3 2 1