

Excellent Integrated System Limited

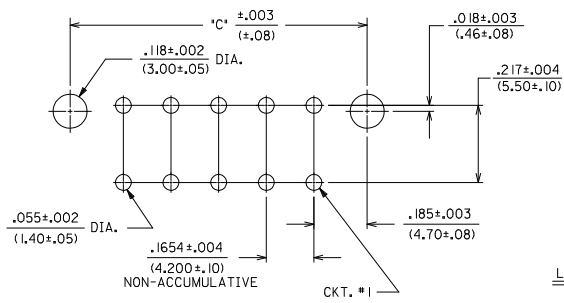
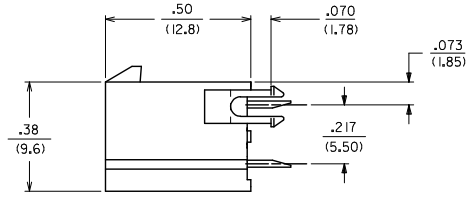
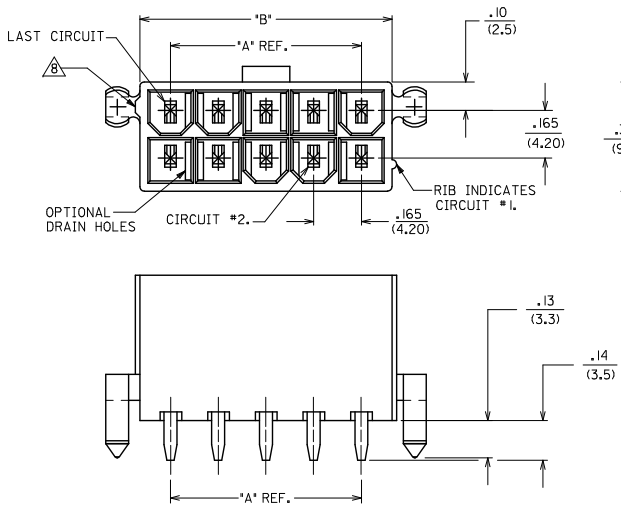
Stocking Distributor

Click to view price, real time Inventory, Delivery & Lifecycle Information:

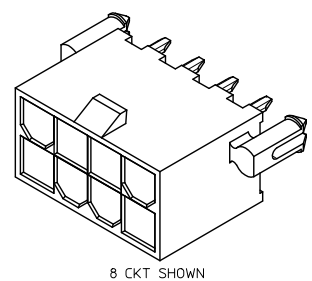
[Molex Connector Corporation](#)
[39-29-9066](#)

For any questions, you can email us directly:
sales@integrated-circuit.com

13 12 11 10 9 8 7 6 5 4 3 2 1



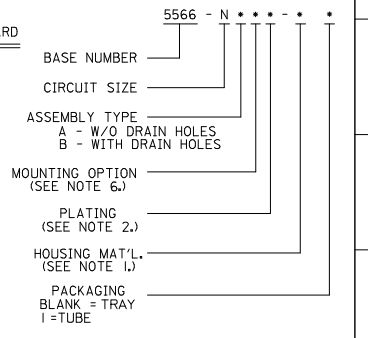
RECOMMENDED HOLE LAYOUT FOR .070/(1.78) MAX. THICK P. C. BOARD
VIEWED FROM COMPONENT SIDE



8 CKT SHOWN

CIRCUIT SIZE	DIM. 'A'	DIM. 'B'	DIM. 'C'
2	—	.21 (5.4)	.370 (9.40)
4	.17 (4.2)	.38 (9.6)	.535 (13.60)
6	.33 (8.4)	.54 (13.8)	.701 (17.80)
8	.50 (12.6)	.71 (18.0)	.866 (22.00)
10	.66 (16.8)	.87 (22.2)	1.031 (26.20)
12	.83 (21.0)	1.04 (26.4)	1.197 (30.40)
14	.99 (25.2)	1.20 (30.6)	1.362 (34.60)
16	1.16 (29.4)	1.37 (34.8)	1.528 (38.80)
18	1.32 (33.6)	1.54 (39.0)	1.693 (43.00)
20	1.49 (37.8)	1.70 (43.2)	1.858 (47.20)
22	1.65 (42.0)	1.87 (47.4)	2.024 (51.40)
24	1.82 (46.2)	2.03 (51.6)	2.189 (55.60)

LEGEND:

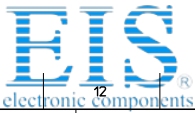


NOTES:

- HOUSING MATERIAL:
 - *BLANK* - NYLON 6/6, UNFILLED U.L. 94V-2, COLOR: NATURAL.
 - 210 - NYLON 6/6, UNFILLED U.L. 94V-0, COLOR: NATURAL.
 - BL - NYLON 6/6, UNFILLED U.L. 94V-2, COLOR: BLACK.
- TERMINAL MATERIAL: BRASS
- TERMINAL PLATING:
 - *BLANK* - .000035/(.00090) MIN. TIN OVER .000020/(.00050) MIN. COPPER.
 - GS - .000030/(.00076) MIN. SELECT GOLD .000100/(.00254) MIN. SELECT MATTE TIN OVER .000050/(.00127) MIN. NICKEL OVERALL.
 - GS2 - .000015/(.00038) MIN. SELECT GOLD AND .000100/(.00254) MIN. SELECT MATTE TIN OVER .000050/(.00127) MIN. NICKEL OVERALL.
 - S - .000100/(.00254) MIN. TIN OVER .000050/(.00127) MIN. NICKEL.
- PRODUCT SPECIFICATION: PS-5566-001
- PACKAGING: SEE CHARTS
- PART MATES WITH MINI-FIT JR. RECEPTACLE #5557.
- MOUNTING OPTIONS:
 - *BLANK* - NO MOUNTING (SEE SD-5566-002 DWG.)
 - 2 - PEG MOUNT
- PART CONFORMS TO CLASS "B" REQUIREMENTS OF COSMETIC SPECIFICATION PS-45499-002
- ANTI-SHINGLING RIB MAY OR MAY NOT APPEAR ON HOUSINGS.
- CONNECTORS ARE NOT TO BE MATED OR UNMATED WHILE CIRCUITS ARE LIVE.
- PARTS ARE NOT DESIGNED FOR CURRENT SHARING.

OBS P/NS EC NO: UCP2014-2543 DRAWING/ENGR: 2013/12/16 CHKD: J.BELL 2013/12/16 APPR: S.MITH 2014/01/10 R6	QUALITY SYMBOLS ∇=0 ∇=0 ∇=0	GENERAL TOLERANCES (UNLESS SPECIFIED)		DIMENSION STYLE		SCALE	DESIGN UNITS	THIRD ANGLE PROJECTION	
				IN/MM		4:1	METRIC		
		4 PLACES ± --- ± ---	3 PLACES ± --- ± .015	DRAWN BY	DATE	TITLE			
		2 PLACES ± 0.38 ± .020	1 PLACE ± 0.50 ± ---	RJF	8/19/87	MINI-FIT JR. VERTICAL HEADER ASSEMBLIES WITH MOUNTING PEGS			
ANGULAR ± 1/2°		APPROVED BY		DATE	MATERIAL NO.				
DRAFT WHERE APPLICABLE MUST REMAIN WITHIN DIMENSIONS		S.MITH		2012/01/10	DOCUMENT NO.				
		SEE SHTS 2-4		Molex MOLEX INCORPORATED					
		THIS DRAWING CONTAINS INFORMATION THAT IS PROPRIETARY TO MOLEX INCORPORATED AND SHOULD NOT BE USED WITHOUT WRITTEN PERMISSION		SHEET NO.		1 OF 4			

1b_frame_C.P._AM.T Rev. F 2009/06/18 12 11 10 9 8 7 6 5 4 3 2 1



Distributor of Molex Connector Corporation: Excellent Integrated System Limited

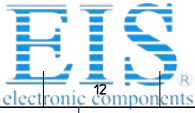
Datasheet of 39-29-9066 - CONN HEADER 6POS 4.2MM VERT TIN

Contact us: sales@integrated-circuit.com Website: www.integrated-circuit.com

PLATING: 35 M.I. TIN			PLATING: 35 M.I. TIN			PLATING: 30 M.I. GOLD			PLATING: 30 M.I. GOLD		
DRAIN HOLES: WITHOUT DRAIN HOLES			DRAIN HOLES: WITHOUT DRAIN HOLES			DRAIN HOLES: WITHOUT DRAIN HOLES			DRAIN HOLES: WITHOUT DRAIN HOLES		
MTG. OPTION: WITH PEGS			MTG. OPTION: WITH PEGS			MTG. OPTION: WITH PEGS			MTG. OPTION: WITH PEGS		
HOUSING MAT'L: NYLON 6/6 94V-2 NATURAL			HOUSING MAT'L: NYLON 6/6 94V-0 NATURAL			HOUSING MAT'L: NYLON 6/6 94V-2 NATURAL			HOUSING MAT'L: NYLON 6/6 94V-0 NATURAL		
PACKAGING: PK-5566-001			PACKAGING: PK-5566-001			PACKAGING: PK-5566-001			PACKAGING: PK-5566-001		
PART NO.	ENG NO.	CKTS	PART NO.	ENG NO.	CKTS	PART NO.	ENG NO.	CKTS	PART NO.	ENG NO.	CKTS
39-29-9023	5566 -02A2	2	39-29-9027	5566 -02A2-210	2	39-29-9025	5566 -02A2G2S	2	39-29-9029	5566 -02A2G2S-210	2
39-29-9043	5566 -04A2	4	39-29-9047	5566 -04A2-210	4	39-29-9045	5566 -04A2G2S	4	39-29-9049	5566 -04A2G2S-210	4
39-29-9063	5566 -06A2	6	39-29-9067	5566 -06A2-210	6	39-29-9065	5566 -06A2G2S	6	39-29-9069	5566 -06A2G2S-210	6
39-29-9083	5566 -08A2	8	39-29-9087	5566 -08A2-210	8	39-29-9085	5566 -08A2G2S	8	39-29-9089	5566 -08A2G2S-210	8
39-29-9103	5566 -10A2	10	39-29-9107	5566 -10A2-210	10	39-29-9105	5566 -10A2G2S	10	39-29-9109	5566 -10A2G2S-210	10
39-29-9123	5566 -12A2	12	39-29-9127	5566 -12A2-210	12	39-29-9125	5566 -12A2G2S	12	39-29-9129	5566 -12A2G2S-210	12
39-29-9143	5566 -14A2	14	39-29-9147	5566 -14A2-210	14	39-29-9145	5566 -14A2G2S	14	39-29-9149	5566 -14A2G2S-210	14
39-29-9163	5566 -16A2	16	39-29-9167	5566 -16A2-210	16	39-29-9165	5566 -16A2G2S	16	39-29-9169	5566 -16A2G2S-210	16
39-29-9183	5566 -18A2	18	39-29-9187	5566 -18A2-210	18	39-29-9185	5566 -18A2G2S	18	39-29-9189	5566 -18A2G2S-210	18
39-29-9203	5566 -20A2	20	39-29-9207	5566 -20A2-210	20	39-29-9205	5566 -20A2G2S	20	39-29-9209	5566 -20A2G2S-210	20
39-29-9223	5566 -22A2	22	39-29-9227	5566 -22A2-210	22	39-29-9225	5566 -22A2G2S	22	39-29-9229	5566 -22A2G2S-210	22
39-29-9243	5566 -24A2	24	39-29-9247	5566 -24A2-210	24	39-29-9245	5566 -24A2G2S	24	39-29-9249	5566 -24A2G2S-210	24

PLATING: 35 M.I. TIN			PLATING: 35 M.I. TIN			PLATING: 30 M.I. GOLD			PLATING: 30 M.I. GOLD		
DRAIN HOLES: WITH DRAIN HOLES			DRAIN HOLES: WITH DRAIN HOLES			DRAIN HOLES: WITH DRAIN HOLES			DRAIN HOLES: WITH DRAIN HOLES		
MTG. OPTION: WITH PEGS			MTG. OPTION: WITH PEGS			MTG. OPTION: WITH PEGS			MTG. OPTION: WITH PEGS		
HOUSING MAT'L: NYLON 6/6 94V-2 NATURAL			HOUSING MAT'L: NYLON 6/6 94V-0 NATURAL			HOUSING MAT'L: NYLON 6/6 94V-2 NATURAL			HOUSING MAT'L: NYLON 6/6 94V-0 NATURAL		
PACKAGING: PK-5566-001			PACKAGING: PK-5566-001			PACKAGING: PK-5566-001			PACKAGING: PK-5566-001		
PART NO.	ENG NO.	CKTS	PART NO.	ENG NO.	CKTS	PART NO.	ENG NO.	CKTS	PART NO.	ENG NO.	CKTS
39-29-9042	5566 -02B2	2	39-29-9046	5566 -02B2-210	2	39-29-9044	5566 -02B2G2S	2	39-28-9048	5566 -02B2G2S-210	2
39-29-9062	5566 -04B2	4	39-29-9066	5566 -04B2-210	4	39-29-9064	5566 -04B2G2S	4	39-28-9068	5566 -04B2G2S-210	4
39-29-9082	5566 -06B2	6	39-29-9086	5566 -06B2-210	6	39-29-9084	5566 -06B2G2S	6	39-28-9088	5566 -06B2G2S-210	6
39-29-9102	5566 -08B2	8	39-29-9106	5566 -08B2-210	8	39-29-9104	5566 -08B2G2S	8	39-28-9108	5566 -08B2G2S-210	8
39-29-9122	5566 -10B2	10	39-29-9126	5566 -10B2-210	10	39-29-9124	5566 -10B2G2S	10	39-28-9128	5566 -10B2G2S-210	10
39-29-9142	5566 -12B2	12	39-29-9146	5566 -12B2-210	12	39-29-9144	5566 -12B2G2S	12	39-28-9148	5566 -12B2G2S-210	12
39-29-9162	5566 -14B2	14	39-29-9166	5566 -14B2-210	14	39-29-9164	5566 -14B2G2S	14	39-28-9168	5566 -14B2G2S-210	14
39-29-9182	5566 -16B2	16	39-29-9186	5566 -16B2-210	16	39-29-9184	5566 -16B2G2S	16	39-28-9188	5566 -16B2G2S-210	16
39-29-9202	5566 -18B2	18	39-29-9206	5566 -18B2-210	18	39-29-9204	5566 -18B2G2S	18	39-28-9208	5566 -18B2G2S-210	18
39-29-9222	5566 -20B2	20	39-29-9226	5566 -20B2-210	20	39-29-9224	5566 -20B2G2S	20	39-28-9228	5566 -20B2G2S-210	20
39-29-9242	5566 -22B2	22	39-29-9246	5566 -22B2-210	22	39-29-9244	5566 -22B2G2S	22	39-28-9248	5566 -22B2G2S-210	22
39-29-9242	5566 -24B2	24	39-29-9246	5566 -24B2-210	24	39-29-9244	5566 -24B2G2S	24	39-28-9248	5566 -24B2G2S-210	24

SEE SHEET 1 IEC NO: UCP2014-2543 2013/12/16 DRAWING/REV CHKD: BELL 2013/12/16 APPR: SMITH 2014/01/10 R6	QUALITY SYMBOLS ∇=0 ∇=0 ∇=0	GENERAL TOLERANCES (UNLESS SPECIFIED)		DIMENSION STYLE		SCALE	DESIGN UNITS	THIRD ANGLE PROJECTION		
				IN/MM		1:1	METRIC			
		4 PLACES	±---	±---	DRAWN BY	DATE	TITLE			
		3 PLACES	±---	±.015	RJF	8/19/87	MINI-FIT JR. VERTICAL HEADER ASSEMBLIES WITH MOUNTING PEGS			
2 PLACES	±0.38	±.020	CHECKED BY	DATE	MOLEX INCORPORATED					
1 PLACE	±0.50	±---	GT	8/19/87						
ANGULAR ±1/2°		APPROVED BY		DATE						
		FSMITH		2012/01/10						
DRAFT WHERE APPLICABLE MUST REMAIN WITHIN DIMENSIONS		MATERIAL NO.		DOCUMENT NO.	SHEET NO.					
		SEE CHART		SDA-5566-N*2*-*	2 OF 4					
		SIZE		THIS DRAWING CONTAINS INFORMATION THAT IS PROPRIETARY TO MOLEX INCORPORATED AND SHOULD NOT BE USED WITHOUT WRITTEN PERMISSION						



Distributor of Molex Connector Corporation: Excellent Integrated System Limited

Datasheet of 39-29-9066 - CONN HEADER 6POS 4.2MM VERT TIN

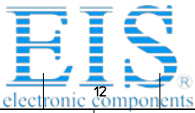
Contact us: sales@integrated-circuit.com Website: www.integrated-circuit.com

PLATING: 100 M.I. BRIGHT TIN		PLATING: 100 M.I. BRIGHT TIN		PLATING: 15 M.I. SELECT GOLD		PLATING: 15 M.I. SELECT GOLD					
DRAIN HOLES: WITHOUT DRAIN HOLES		DRAIN HOLES: WITHOUT DRAIN HOLES		DRAIN HOLES: WITHOUT DRAIN HOLES		DRAIN HOLES: WITHOUT DRAIN HOLES					
MTG. OPTION: WITH PEGS		MTG. OPTION: WITH PEGS		MTG. OPTION: WITH PEGS		MTG. OPTION: WITH PEGS					
HOUSING MAT'L: NYLON 6/6 94V-2 NATURAL		HOUSING MAT'L: NYLON 6/6 94V-0 NATURAL		HOUSING MAT'L: NYLON 6/6 94V-2 NATURAL		HOUSING MAT'L: NYLON 6/6 94V-0 NATURAL					
PACKAGING: PK-5566-001		PACKAGING: PK-5566-001		PACKAGING: PK-5566-001		PACKAGING: PK-5566-001					
PART NO.	ENG NO.	CKTS	PART NO.	ENG NO.	CKTS	PART NO.	ENG NO.	CKTS	PART NO.	ENG NO.	CKTS
39-30-6025	5566 -02A2S	2	39-30-6026	5566 -02A2S-210	2	39-30-0026	5566 -02A2GS2	2	39-30-0027	5566 -02A2GS2-210	2
39-30-6045	5566 -04A2S	4	39-30-6046	5566 -04A2S-210	4	39-30-0046	5566 -04A2GS2	4	39-30-0047	5566 -04A2GS2-210	4
39-30-6065	5566 -06A2S	6	39-30-6066	5566 -06A2S-210	6	39-30-0066	5566 -06A2GS2	6	39-30-0067	5566 -06A2GS2-210	6
39-30-6085	5566 -08A2S	8	39-30-6086	5566 -08A2S-210	8	39-30-0086	5566 -08A2GS2	8	39-30-0087	5566 -08A2GS2-210	8
39-30-6105	5566 -10A2S	10	39-30-6106	5566 -10A2S-210	10	39-30-0106	5566 -10A2GS2	10	39-30-0107	5566 -10A2GS2-210	10
39-30-6125	5566 -12A2S	12	39-30-6126	5566 -12A2S-210	12	39-30-0126	5566 -12A2GS2	12	39-30-0127	5566 -12A2GS2-210	12
39-30-6145	5566 -14A2S	14	39-30-6146	5566 -14A2S-210	14	39-30-0146	5566 -14A2GS2	14	39-30-0147	5566 -14A2GS2-210	14
39-30-6165	5566 -16A2S	16	39-30-6166	5566 -16A2S-210	16	39-30-0166	5566 -16A2GS2	16	39-30-0167	5566 -16A2GS2-210	16
39-30-6185	5566 -18A2S	18	39-30-6186	5566 -18A2S-210	18	39-30-0186	5566 -18A2GS2	18	39-30-0187	5566 -18A2GS2-210	18
39-30-6205	5566 -20A2S	20	39-30-6206	5566 -20A2S-210	20	39-30-0206	5566 -20A2GS2	20	39-30-0207	5566 -20A2GS2-210	20
39-30-6225	5566 -22A2S	22	39-30-6226	5566 -22A2S-210	22	39-30-0226	5566 -22A2GS2	22	39-30-0227	5566 -22A2GS2-210	22
39-30-6245	5566 -24A2S	24	39-30-6246	5566 -24A2S-210	24	39-30-0246	5566 -24A2GS2	24	39-30-0247	5566 -24A2GS2-210	24

PLATING: 100 M.I. BRIGHT TIN		PLATING: 100 M.I. BRIGHT TIN					
DRAIN HOLES: WITH DRAIN HOLES		DRAIN HOLES: WITH DRAIN HOLES					
MTG. OPTION: WITH PEGS		MTG. OPTION: WITH PEGS					
HOUSING MAT'L: NYLON 6/6 94V-2 NATURAL		HOUSING MAT'L: NYLON 6/6 94V-0 NATURAL					
PACKAGING: PK-5566-001		PACKAGING: PK-5566-001					
PART NO.	ENG NO.	CKTS	PART NO.	ENG NO.	CKTS		
5566 -02B2S		2	5566 -02B2S-210		2		
39-30-6047	5566 -04B2S	4	39-30-6048	5566 -04B2S-210	4		
39-30-6067	5566 -06B2S	6	39-30-6068	5566 -06B2S-210	6		
39-30-6087	5566 -08B2S	8	39-30-6088	5566 -08B2S-210	8		
39-30-6107	5566 -10B2S	10	39-30-6108	5566 -10B2S-210	10		
39-30-6127	5566 -12B2S	12	39-30-6128	5566 -12B2S-210	12		
39-30-6147	5566 -14B2S	14	39-30-6148	5566 -14B2S-210	14		
39-30-6167	5566 -16B2S	16	39-30-6168	5566 -16B2S-210	16		
39-30-6187	5566 -18B2S	18	39-30-6188	5566 -18B2S-210	18		
39-30-6207	5566 -20B2S	20	39-30-6208	5566 -20B2S-210	20		
39-30-6227	5566 -22B2S	22	39-30-6228	5566 -22B2S-210	22		
39-30-6247	5566 -24B2S	24	39-30-6248	5566 -24B2S-210	24		

PLATING: 100 M.I. BRIGHT TIN		PLATING: 100 M.I. BRIGHT TIN					
DRAIN HOLES: WITH DRAIN HOLES		DRAIN HOLES: WITH DRAIN HOLES					
MTG. OPTION: WITH PEGS		MTG. OPTION: WITH PEGS					
HOUSING MAT'L: NYLON 6/6 94V-2 NATURAL		HOUSING MAT'L: NYLON 6/6 94V-0 NATURAL					
PACKAGING: PK-5566-001		PACKAGING: PK-5566-001					
PART NO.	ENG NO.	CKTS	PART NO.	ENG NO.	CKTS		
5566 -02B2S		2	5566 -02B2S-210		2		
39-30-6047	5566 -04B2S	4	39-30-6048	5566 -04B2S-210	4		
39-30-6067	5566 -06B2S	6	39-30-6068	5566 -06B2S-210	6		
39-30-6087	5566 -08B2S	8	39-30-6088	5566 -08B2S-210	8		
39-30-6107	5566 -10B2S	10	39-30-6108	5566 -10B2S-210	10		
39-30-6127	5566 -12B2S	12	39-30-6128	5566 -12B2S-210	12		
39-30-6147	5566 -14B2S	14	39-30-6148	5566 -14B2S-210	14		
39-30-6167	5566 -16B2S	16	39-30-6168	5566 -16B2S-210	16		
39-30-6187	5566 -18B2S	18	39-30-6188	5566 -18B2S-210	18		
39-30-6207	5566 -20B2S	20	39-30-6208	5566 -20B2S-210	20		
39-30-6227	5566 -22B2S	22	39-30-6228	5566 -22B2S-210	22		
39-30-6247	5566 -24B2S	24	39-30-6248	5566 -24B2S-210	24		

SEE SHEET 1 EC NO: UCP2014-2543 DRAWING NO: 2013/12/16 CHKD: BELL APPR: SMITH 2014/01/10	QUALITY SYMBOLS 	GENERAL TOLERANCES (UNLESS SPECIFIED)		DIMENSION STYLE		SCALE	DESIGN UNITS	THIRD ANGLE PROJECTION	
				IN/MM		1:1	METRIC		
		4 PLACES ±---	±---	DRAWN BY	DATE	TITLE			
		3 PLACES ±---	±.015	RJF	8/19/87	MINI-FIT JR. VERTICAL HEADER ASSEMBLIES WITH MOUNTING PEGS			
2 PLACES ±0.38	±.020	CHECKED BY	DATE	MOLEX INCORPORATED					
1 PLACE ±0.50	±---	GT	8/19/87	MATERIAL NO. SDA-5566-N*2*-*					
ANGULAR ±1/2°		APPROVED BY	DATE	SHEET NO. 3 OF 4					
		FSMITH	2012/01/10	THIS DRAWING CONTAINS INFORMATION THAT IS PROPRIETARY TO MOLEX INCORPORATED AND SHOULD NOT BE USED WITHOUT WRITTEN PERMISSION					



Distributor of Molex Connector Corporation: Excellent Integrated System Limited

Datasheet of 39-29-9066 - CONN HEADER 6POS 4.2MM VERT TIN

Contact us: sales@integrated-circuit.com Website: www.integrated-circuit.com

13 12 11 10 9 8 7 6 5 4 3 2 1

PLATING: 35 M.I. TIN			PLATING: 35 M.I. TIN			PLATING:			PLATING:		
DRAIN HOLES: WITHOUT DRAIN HOLES			DRAIN HOLES: WITHOUT DRAIN HOLES			DRAIN HOLES:			DRAIN HOLES:		
MTG. OPTION: WITH PEGS			MTG. OPTION: WITH PEGS			MTG. OPTION:			MTG. OPTION:		
HOUSING MAT'L: NYLON 6/6 94V-2 (BLACK)			HOUSING MAT'L: 94V-2 NATURAL			HOUSING MAT'L:			HOUSING MAT'L:		
PACKAGING: PK-5566-001			PACKAGING: TUBE			PACKAGING:			PACKAGING:		
PART NO.	ENG NO.	CKTS	PART NO.	ENG NO.	CKTS	PART NO.	ENG NO.	CKTS	PART NO.	ENG NO.	CKTS
39-31-9028	5566 -02A2-BL	2	39-34-8028	5566 -02A2-1	2	-	-	-	-	-	-
39-31-9048	5566 -04A2-BL	4	39-34-8048	5566 -04A2-1	4	-	-	-	-	-	-
39-31-9068	5566 -06A2-BL	6	39-34-8068	5566 -06A2-1	6	-	-	-	-	-	-
39-31-9088	5566 -08A2-BL	8	39-34-8088	5566 -08A2-1	8	-	-	-	-	-	-
39-31-9108	5566 -10A2-BL	10	39-34-8108	5566 -10A2-1	10	-	-	-	-	-	-
39-31-9128	5566 -12A2-BL	12	39-34-8128	5566 -12A2-1	12	-	-	-	-	-	-
39-31-9148	5566 -14A2-BL	14	39-34-8148	5566 -14A2-1	14	-	-	-	-	-	-
39-31-9168	5566 -16A2-BL	16	39-34-8168	5566 -16A2-1	16	-	-	-	-	-	-
39-31-9188	5566 -18A2-BL	18	39-34-8188	5566 -18A2-1	18	-	-	-	-	-	-
39-31-9208	5566 -20A2-BL	20	39-34-8208	5566 -20A2-1	20	-	-	-	-	-	-
39-31-9228	5566 -22A2-BL	22	39-34-8228	5566 -22A2-1	22	-	-	-	-	-	-
39-31-9248	5566 -24A2-BL	24	39-34-8248	5566 -24A2-1	24	-	-	-	-	-	-

PLATING:			PLATING:			PLATING:			PLATING:		
DRAIN HOLES:			DRAIN HOLES:			DRAIN HOLES:			DRAIN HOLES:		
MTG. OPTION:			MTG. OPTION:			MTG. OPTION:			MTG. OPTION:		
HOUSING MAT'L:			HOUSING MAT'L:			HOUSING MAT'L:			HOUSING MAT'L:		
PACKAGING:			PACKAGING:			PACKAGING:			PACKAGING:		
PART NO.	ENG NO.	CKTS	PART NO.	ENG NO.	CKTS	PART NO.	ENG NO.	CKTS	PART NO.	ENG NO.	CKTS
-	-	-	-	-	-	-	-	-	-	-	-
-	-	-	-	-	-	-	-	-	-	-	-
-	-	-	-	-	-	-	-	-	-	-	-
-	-	-	-	-	-	-	-	-	-	-	-
-	-	-	-	-	-	-	-	-	-	-	-
-	-	-	-	-	-	-	-	-	-	-	-
-	-	-	-	-	-	-	-	-	-	-	-
-	-	-	-	-	-	-	-	-	-	-	-
-	-	-	-	-	-	-	-	-	-	-	-
-	-	-	-	-	-	-	-	-	-	-	-
-	-	-	-	-	-	-	-	-	-	-	-
-	-	-	-	-	-	-	-	-	-	-	-
-	-	-	-	-	-	-	-	-	-	-	-
-	-	-	-	-	-	-	-	-	-	-	-
-	-	-	-	-	-	-	-	-	-	-	-
-	-	-	-	-	-	-	-	-	-	-	-
-	-	-	-	-	-	-	-	-	-	-	-
-	-	-	-	-	-	-	-	-	-	-	-

SEE SHEET 1 EC NO: UCP2014-2543 DRAWING NO: 2013/12/16 CHKD: BELL APPR: SMITH 2014/01/16	QUALITY SYMBOLS 	GENERAL TOLERANCES (UNLESS SPECIFIED)		DIMENSION STYLE IN/MM		SCALE 1:1	DESIGN UNITS METRIC	THIRD ANGLE PROJECTION	
		4 PLACES ± --- ± ---	mm	INCH	DRAWN BY R/JF	DATE 8/19/87	TITLE MINI-FIT JR. VERTICAL HEADER ASSEMBLIES WITH MOUNTING PEGS		
		3 PLACES ± --- ± .015			CHECKED BY GT	DATE 8/19/87			
		2 PLACES ± 0.38 ± .020			APPROVED BY F SMITH	DATE 2012/01/10	MOLEX INCORPORATED		
		1 PLACE ± 0.50 ± ---	ANGULAR ± 1/2°		MATERIAL NO.	DOCUMENT NO.	SHEET NO. 4 OF 4		
DRAFT WHERE APPLICABLE MUST REMAIN WITHIN DIMENSIONS				SEE CHART		SDA-5566-N*2*-*			
THIS DRAWING CONTAINS INFORMATION THAT IS PROPRIETARY TO MOLEX INCORPORATED AND SHOULD NOT BE USED WITHOUT WRITTEN PERMISSION									

13 12 11 10 9 8 7 6 5 4 3 2 1

ib_frame_C.P.A.M.T
Rev. F 2009/06/18