

## **Excellent Integrated System Limited**

Stocking Distributor

Click to view price, real time Inventory, Delivery & Lifecycle Information:

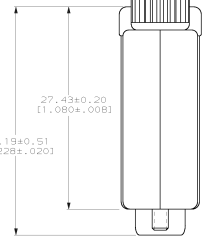
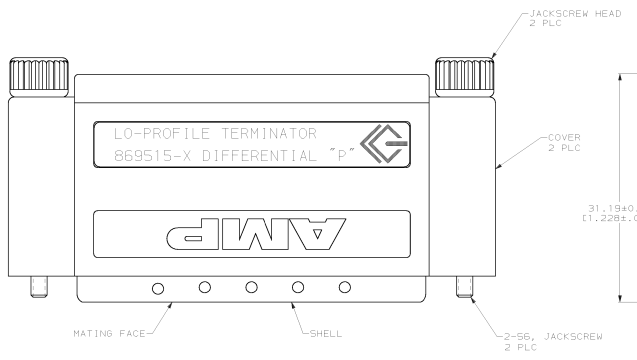
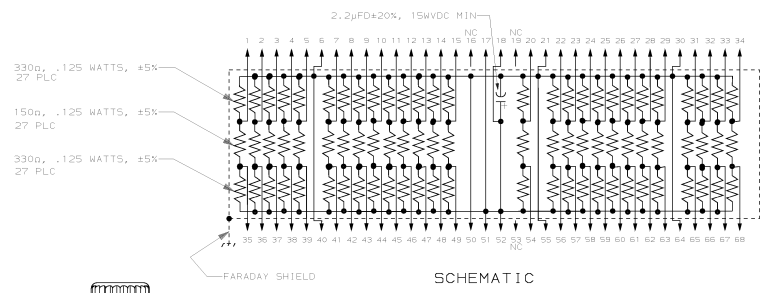
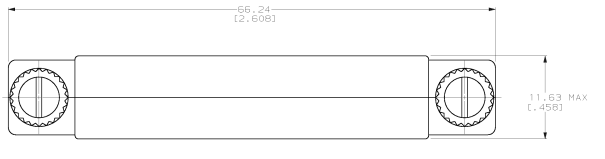
[TE Connectivity AMP Connectors](#)  
[869515-1](#)

For any questions, you can email us directly:

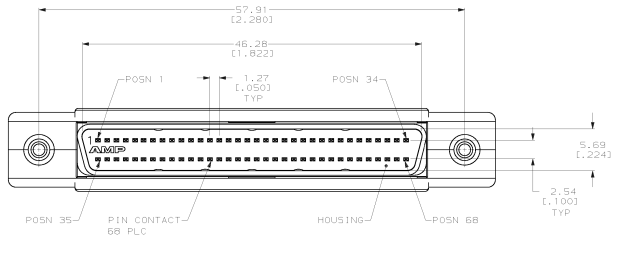
[sales@integrated-circuit.com](mailto:sales@integrated-circuit.com)

PRINTING MADE IN THISED ANGLE PROJECTION  
 THIS DRAWING IS UNCONTROLLED. RELEASED FOR PUBLICATION  
 © COPYRIGHT 14 BY AMP INCORPORATED. ALL INTERNATIONAL RIGHTS RESERVED.

REV	DATE	DESCRIPTION	DATE	APPD
F	REV PER EC 0020-601-93			PER
G	REV PER EC 0020-1462-93			NLF
H	REV PER EC 0020-0080-95			PER
J	REV PER EC 0020-0186-95			RF
K	REV PER EC 0640-166-99			JC
L	REV PER EC 0514-0168-00			MS



- △ SHELL: CARBON STEEL; PIN CONTACT: PHOSPHOR BRONZE; HOUSING: POLYESTER, BLACK; RESISTOR, THICK FILM RESISTOR COMPOSITION ON ALUMINA SUBSTRATE, JACKSCREW: STAINLESS STEEL; SHIELD: COPPER; COVER: ABS, GREY, UL 94V-0; JACKSCREW HEAD: PVC, BEIGE.
- △ 5.08μm (0.000200) MIN TIN-NICKEL OVER 1.27μm (0.00050) MIN COPPER.
- △ 0.76μm (0.000030) MIN GOLD FOR A LENGTH OF 3.35 (0.132) MIN FROM MATING END OVER 1.27μm (0.00050) MIN NICKEL.
- △ SEE RESTRICTED CUSTOMER DRAWING 869515-2.



DO NOT SCALE PRINT. UNLESS SPECIFIED DIMENSIONS IN INCHES TOLERANCES ON DIMENSIONS ARE: ANGLES ± ° FINISH: △		DR 8-1-91 J MILLINION CR 3-30-20 R STONE APPD: DR-2-91 P: RUELUS J: PIERSON PRODUCT SPEC: -		AMP Incorporated Harrisburg, PA 17105-3608 PLUS ASSEMBLY, 68 POSITION, LOW PROFILE, .050 SERIES AMPLITE™ TERMINATOR	
FINISH: △	CONTACTS: △	APPLICATION SPEC: -	SIZE: D	CAGE CODE: 00779	DRAWING NO: 869515
HEIGHT: -	REWORK: -	SCALE: 4:1	SCALE: 4:1	SHEET: 1 OF 1	