

## Excellent Integrated System Limited

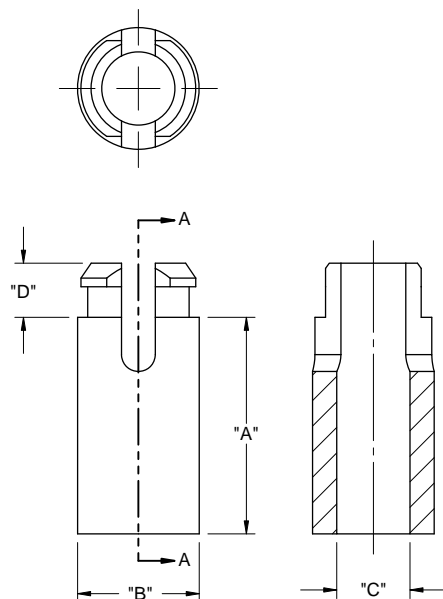
Stocking Distributor

Click to view price, real time Inventory, Delivery & Lifecycle Information:

[Essentra Components \(formerly Richco, Inc.\)](#)  
[SRS4-4-01](#)

For any questions, you can email us directly:

[sales@integrated-circuit.com](mailto:sales@integrated-circuit.com)






SECTION A-A  
SCALE 3 : 1

**NOTES:**

- STANDARD MATERIALS:  
-NYLON 6/6 UL 94 V-2 (RMS-01), COLOR NATURAL.  
-FLAME RETARDANT NYLON 6/6 UL 94 V-0 (RMS-19), COLOR NATURAL.
- ALTERNATE MATERIAL AVAILABLE BY SPECIAL ORDER ONLY:  
-HEAT RESISTANT NYLON (RMS-109), COLOR NATURAL.  
TO ORDER, REPLACE "-01" WITH "-109"
- ALTERNATE UNITS FOR REFERENCE ONLY

PART NO. FOR #4 (M3) SCREW	PART NO. FOR #6 (M3.5) SCREW	PART NO. FOR #8 (M4) SCREW	PART NO. FOR #8 (M4) SCREW	DIM. "A" ±.015 [0.4]
SRS4-2-01	----	----	----	1/8 [3.2]
SRS4-3-01	----	SRS8-3-01	SRS8-2-3-01	3/16 [4.8]
SRS4-4-01	SRS6-4-01	SRS8-4-01	SRS8-2-4-01	1/4 [6.4]
SRS4-5-01	SRS6-5-01	SRS8-5-01	SRS8-2-5-01	5/16 [7.9]
SRS4-6-01	SRS6-6-01	SRS8-6-01	SRS8-2-6-01	3/8 [9.5]
SRS4-7-01	SRS6-7-01	SRS8-7-01	SRS8-2-7-01	7/16 [11.1]
SRS4-8-01	SRS6-8-01	SRS8-8-01	SRS8-2-8-01	1/2 [12.7]
SRS4-10-01	SRS6-10-01	SRS8-10-01	SRS8-2-10-01	5/8 [15.9]
SRS4-12-01	SRS6-12-01	SRS8-12-01	SRS8-2-12-01	3/4 [19.1]
SRS4-14-01	SRS6-14-01	SRS8-14-01	SRS8-2-14-01	7/8 [22.2]
SRS4-16-01	SRS6-16-01	SRS8-16-01	SRS8-2-16-01	1 [25.4]

SERIES NO.	"B"	"C"	"D"	MOUNTING HOLE DIA. ±.003 [0.08]	MOUNTING PANEL THICKNESS
SRS4	1/4 [6.4]	.125 [3.2]	1/8 [3.2]	.187 [4.7]	.062 [1.57]
SRS6	9/32 [7.1]	.153 [3.9]		.234 [5.9]	
SRS8	9/32 [7.1]	.169 [4.3]			.152 [3.85]
SRS8-2					

				TITLE: SELF RETAINING SPACERS				 		DWG IN IN [MM]					
CREATED USING SOLIDWORKS				FILE #: SRS				DWN: SK		APP: RT		FINAL			
TOLERANCES UNLESS NOTED				SHEET: 1 OF 1		SHEET SIZE: A		DT: 09/28/05		CHKD: SJ		PART #		PRINT TYPE	
XX±.010				RE: RICHCO, INC.				RICHCO, INC.				SEE TABLE CA			
XXX±.005								ENG@RICHCO-INC.COM							
FRAC±1/64								(773) 539-4060							
ANG±1°															
- SEE ENGINEERING FOR REV. A - E															
REV. DESCRIPTION				ENGR. DATE											