

## Excellent Integrated System Limited

Stocking Distributor

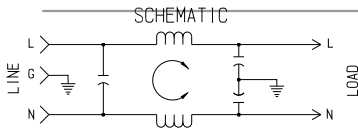
Click to view price, real time Inventory, Delivery & Lifecycle Information:

[Curtis Industries](#)  
[FPE963203](#)

For any questions, you can email us directly:

[sales@integrated-circuit.com](mailto:sales@integrated-circuit.com)

REVISION HISTORY			
REV	DESCRIPTION	DATE & CHG BY	APPROVED
-	RELEASED	03-12-09 LAW	CJD



50 Ω INSERTION LOSS

COMMON MODE		DIFFERENTIAL MODE	
Mhz	min. I.L. (dB)	Mhz	min. I.L. (dB)
.01		.01	
.03		.03	
.05		.05	
.15	18	.15	8
0.5	24	0.5	18
1.0	30	1.0	24
5.0	45	5.0	46
10	45	10	50
20	50	20	40
30	50	30	40

TEST SPECIFICATIONS

HI-POT (2 sec.)

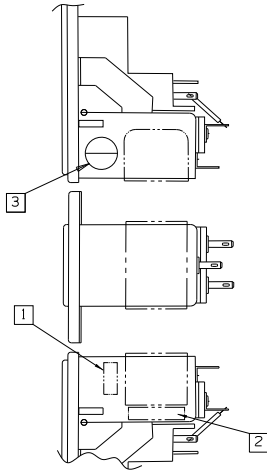
L/G 1500 VAC

L/L 1768 VDC

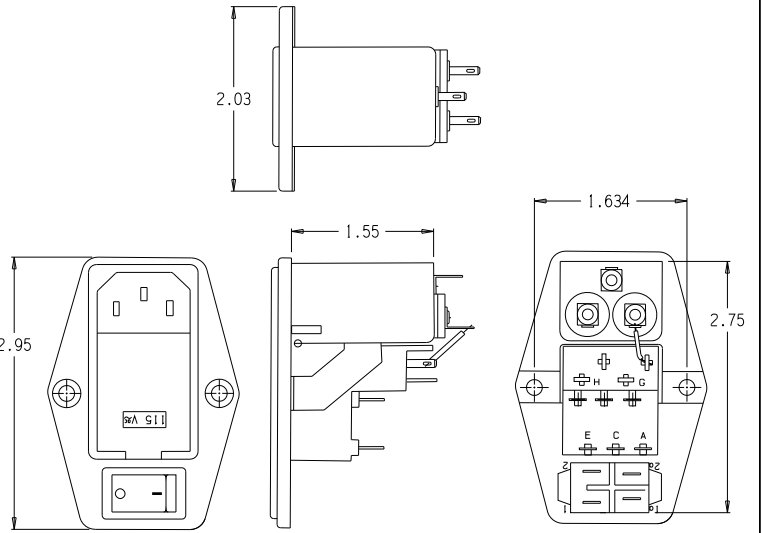
RATED VOLTAGE: 250 VAC MAXIMUM  
 RATED CURRENT: at 115 VAC 3 A MAXIMUM  
 at 250 VAC 3 A MAXIMUM  
 LINE FREQUENCY 50/60 Hz  
 INSULATION RESISTANCE 9000 MEGOHMS MINIMUM at 100VDC  
 LEAKAGE CURRENT of 115 VAC, 60Hz .25 mA MAXIMUM  
 of 250 VAC, 50Hz .40 mA MAXIMUM

ENVIRONMENTAL SPECIFICATIONS

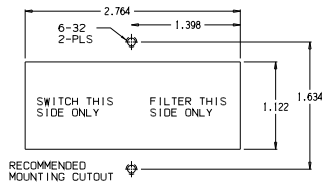
AMBIENT TEMPERATURE RANGE 0 deg.C to 40 deg.C  
 ( OPERATING AT RATED CURRENT )  
 HUMIDITY RANGE 0 % to 95 % R.H.



1. DATE CODE TO BE STAMPED IN THIS AREA
2. BUILDER TO PRINT MOTHER P/N ON CAN
3. STAMP ASSEMBLY LOCATION CODE HERE.



RECOMMENDED MOUNTING CUTOUT



CONFIDENTIAL-PROPRIETARY TO CURTIS INDUSTRIES. NOT TO BE SHARED WITH THIRD PARTY WITHOUT WRITTEN PERMISSION FROM CURTIS INDUSTRIES

CAD FILENAME: FPE963203 Rev- B.prt	<p>2400 South 43rd Street        Milwaukee, WI 53219        A Div. of Powers Holdings, Inc. Phone: (414) 649-4200</p>
PREVIOUS P/N: NONE	
SPECIAL INSTRUCTIONS: N/A	UNLESS OTHERWISE SPECIFIED DIMENSIONS ARE IN INCHES. TOLERANCES ARE: DECIMALS ANGLES .XX±.03 ±0°30' .XXX±.010
FINISH: N/A	TITLE: POWER ENTRY FILTER SPECIFICATION SCALE: 1:1 DRAWN: LAW CHECKED: C.J.DEBRAAL DATE: 03-12-09
MATERIAL: N/A	SIZE: B SHT. 1 OF 1 DWG NO. FPE963203 REV. -