



Excellent Integrated System Limited

Stocking Distributor

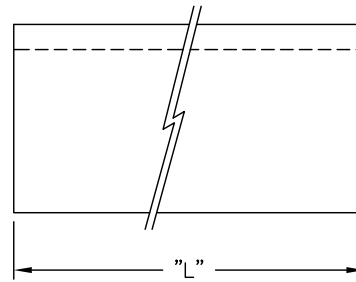
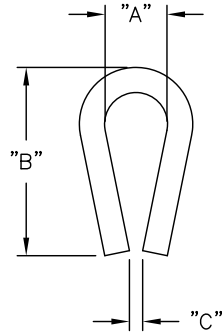
Click to view price, real time Inventory, Delivery & Lifecycle Information:

[Essentra Components \(formerly Richco, Inc.\)](#)
[DSC-1-48](#)

For any questions, you can email us directly:
sales@integrated-circuit.com

PART NO.	"A"±.015 (±0.4)	"B"±.031 (±0.8)	"C" REF.	WALL THICKNESS ±.007 (±0.18)	LENGTH "L"
DSC-.5-48	.062 (1.6)	.300 (7.6)	.031 (0.8)	.031 (0.8)	48 (1.2m)
*DSC-.5-1200					1200 (30.5m)
DSC-1-48	.125 (3.2)	.375 (9.5)	.020 (0.5)	.047 (1.2)	48 (1.2m)
*DSC-1-1200					1200 (30.5m)
DSC-2-48	.188 (4.8)	.500 (12.7)	.031 (0.8)	.063 (1.6)	48 (1.2m)
DSC-3-48	.250 (6.4)	.625 (15.9)	.045 (1.1)		48 (1.2m)

*PARTS AVAILABLE BY SPECIAL ORDER ONLY



NOTES:

- MATERIAL: MDS FILLED NYLON (RMS-21).
- COLOR: GRAY.

K	OBSOLETE -2-1200 AND -3-1200, CO 200532	SK 05.10.10
J	SEE ECN # 1304 FOR CHANGES	SK 03.30.07
I	SEE ECN # 1144 FOR CHANGES	SJ 03.17.06
H	SEE ECN #914 FOR CHANGES	SK 01.14.05
G	SEE ECN #818 FOR CHANGES	SM 10.01.04
F	TABLE UPDATED	SM 12.21.01
E	CHANGED FILE NUMBER	SM 07.17.01
D	ADDED -1200 PART NUMBERS	JK 12.10.99
C	ADDED MDS TO MAT'L, ADDED DSC-.5	JK 10.8.99
B	ADDED TOLERANCE	JK 9.1.99
A	CONVERTED TO ACAD	JL 1.11.98
REV	DESCRIPTION	ENGR DATE

TITLE: DURO STRIP CHANNEL				DWG IN IN(MM)	FINAL
TOLERANCES UNLESS NOTED .XX=±.020 .XXX=±.015 FRAC=±1/32 ANG=±1'	FILE # DSC	DWN: JL	DT: 1/12/99		
	MAT'L: SEE NOTES	CHKD:	ENG:	PART #	PRINT TYPE
	RE: RICHCO, INC.	RICHCO INC. ENG@RICHCO-INC.COM (773) 539-4060		SEE TABLE	CA