

Excellent Integrated System Limited

Stocking Distributor

Click to view price, real time Inventory, Delivery & Lifecycle Information:

[Amphenol RF](#)
[531-40047-3](#)

For any questions, you can email us directly:

sales@integrated-circuit.com

NOTES:

1. INFORMATION CONTAINED ON THIS DRAWING IS INTENDED TO PROVIDE AMPHENOL'S CUSTOMERS SPECIFICATIONS CRITICAL TO THE INSTALLATION AND USE OF THE ASSOCIATED PRODUCT. AMPHENOL RETAINS THE RIGHT TO REVISE THIS DOCUMENT WITHOUT NOTICE PROVIDING THAT THE CHANGE WILL NOT AFFECT FORM, FIT OR FUNCTION INTERCHANGEABILITY WITH PREVIOUSLY SUPPLIED PRODUCT. IN THE EVENT OF ANY CHANGE AFFECTING SAID INTERCHANGEABILITY CUSTOMERS WILL BE NOTIFIED PRIOR TO IMPLEMENTATION.

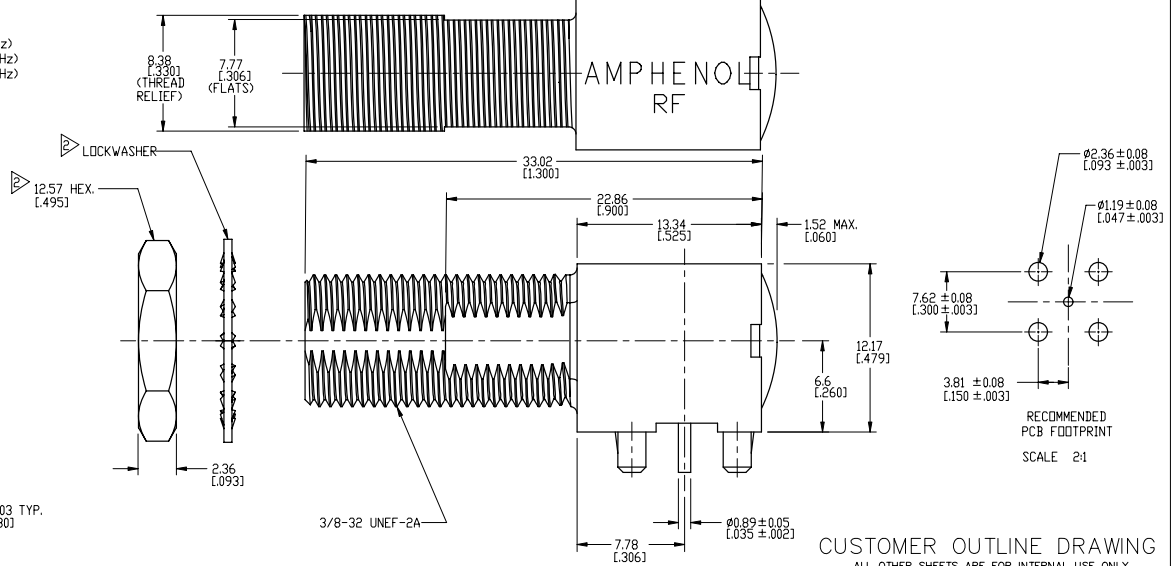
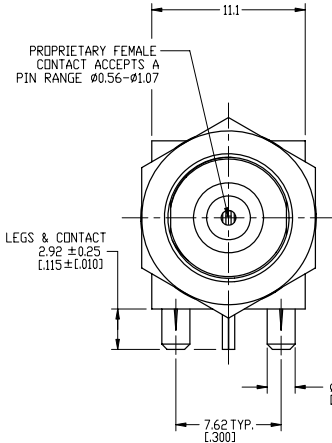
CONNECTORS, LOCKWASHER, AND NUT ARE BAGGED SEPARATELY (BULKPACKED 300).

3. MATERIALS & FINISHES:

- BODY - ZINC, TIN PLATED.
CONTACT - BERYLLIUM COPPER, TIN PLATED.
HEX NUT - BRASS, NICKEL PLATED.
LOCKWASHER - BRASS, NICKEL PLATED.
INSULATOR - TPX (METHYLENE COPOLYMER)

4. ELECTRICAL:

- A. FREQUENCY RANGE = DC TO 3.0 GHz
B. RETURN LOSS = -30 dB MAX. (DC TO 1.0 GHz)
-20 dB MAX. (1.0 TO 2.0 GHz)
-10 dB MAX. (2.0 TO 3.0 GHz)



CUSTOMER OUTLINE DRAWING
ALL OTHER SHEETS ARE FOR INTERNAL USE ONLY

UNLESS OTHERWISE SPECIFIED, DIMENSIONS ARE IN METRIC AND TOLERANCES ARE:
 <0.5mm ±0.05mm 0.5 - 6mm ±0.1mm 6 - 30mm ±0.2mm 30 - 120mm ±0.3mm ANGLES ±1°

NOTICE - These drawings, specifications, or other data (1) are, and remain the property of Amphenol Corp. (2) must be returned upon request; and (3) are confidential and not to be disclosed to any person other than those to whom they are given by Amphenol Corp. The furnishing of these drawings, specifications, or other data by Amphenol Corp., or to any other person to anyone for any purpose is not to be regarded by implication or otherwise in any manner licensing, granting rights or permitting such holder or any other person to manufacture, use or sell any product, process or design, patented or otherwise, that may in any way be related to or disclosed by said drawings, specifications, or other data.

MATERIAL

REFERENCE

FINISH

DRAWN

ENGINEER

APPROVED

CAD FILE

DATE

DATE

DATE

DATE

TITLE

SCALE: 4/1

DWG SIZE

CODE ID

REV

F (FEMALE)
PCB RT. ANGLE
W/HARDWARE

SHEET 2 OF 2

74868

L

Amphenol RF

Danbury CT USA, Tainan Taiwan, Shenzhen China
www.amphenolrf.com

DRAWING NO. 531-40047-3

ITEM NO. 531-40047-3

PART NO. 531-40047-3