

Excellent Integrated System Limited

Stocking Distributor

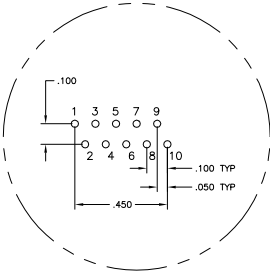
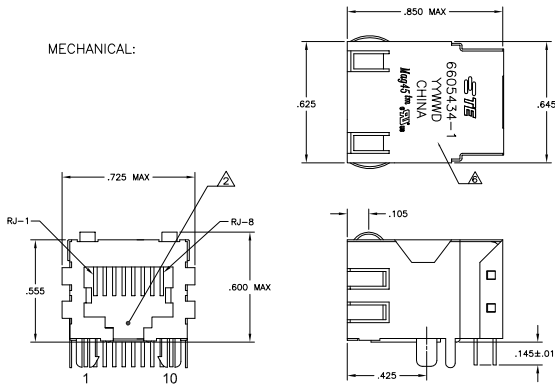
Click to view price, real time Inventory, Delivery & Lifecycle Information:

[TE Connectivity AMP Connectors
6605434-1](#)

For any questions, you can email us directly:
sales@integrated-circuit.com

REVISONS		DATE	BY	CHKD	APP'D
AA	22				
B	REV PER ECO-08-026413				
C	ECO-11-015786	2009/02/11	EL	LR	

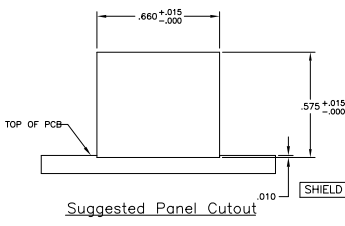
MECHANICAL:



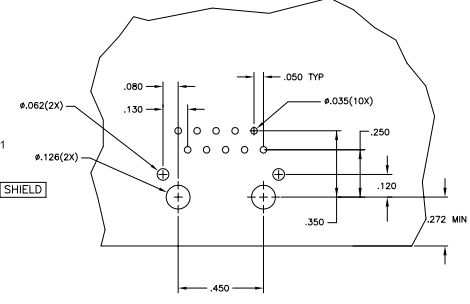
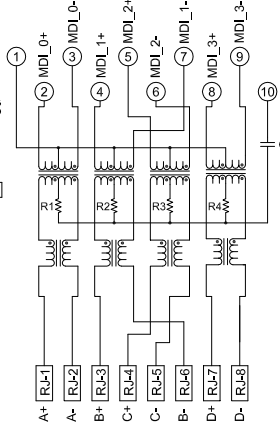
Pin Designations

- △ MATERIALS:
 - HOUSING - THERMOPLASTIC PET POLYESTER FLAMMABILITY RATING UL 94V-0.
 - SHIELD - .010" THICK, C26800 BRASS PREPLATED WITH 30μINCH SEMI-BRIGHT NICKEL. SOLDER TABS POST DIPPED WITH 100μINCH MIN SAC SOLDER.
 - MOD JACK CONTACTS - 0.0157 X 0.018" PHOSPHOR BRONZE, 50μINCH MIN OVERALL NICKEL UNDERPLATE, WITH SELECT 50μINCH MIN HARD GOLD FINISH PLATE SOLDERTAILS WITH 100μINCH MIN MATTE TIN AND/OR SAC SOLDER DIP.
- △ RJ45 JACK CAVITY CONFORMS TO FCC RULES AND REGULATIONS PART 68, SUB PART F.
- △ MAGNETICS
 - IMPEDANCE: 100 OHMS
 - TURNING RATIO (CHP-CABLE): 1:1 ALL FOUR PAIRS
 - OPEN CIRCUIT INDUCTANCE (OCL): 350nH MIN @100MHz, 0.1VRMS, 8mA DC BIAS FROM 0°C TO 70°C, ALL FOUR PAIRS
 - ALL FOUR PAIRS BI-DIRECTIONAL
 - PERFORMANCE @ 25°C
 - INSERTION LOSS (IL): 11dB MAX FROM 0.5MHz TO 100MHz
 - RETURN LOSS (RL): 18dB MIN FROM 0.5MHz TO 40MHz
 - 12-20LOG(f/80)dB MIN FROM 4.0MHz TO 100MHz
 - CROSSTALK ATTENUATION: 35dB MIN FROM 0.5MHz TO 40MHz
 - 33-20*LOG(f/50)dB MIN FROM 4.0MHz TO 100MHz
 - COMMON MODE REJECTION RATIO (CMRR): 30dB MIN FROM 0.5MHz TO 100MHz
 - ISOLATION VOLTAGE: 2250VDC (MAX) FOR 60 SECONDS WITH A RISE TIME OF 50V/SEC.
- △ OPERATING TEMPERATURE: FROM 0°C TO +70°C.
- △ THE MAGNETICS ARE SYMMETRIC TO SUPPORT AUTO-MDU/MDIX.
- △ TE CONNECTIVITY LOGO, PART NUMBER, DATE CODE, COUNTRY OF ORIGIN AND AGENCY APPROVAL MARKING IN APPROXIMATE LOCATION AS SHOWN.
- 7. THE PART IS RECOMMENDED FOR WAVE SOLDERING PROCESS. PREHEAT TEMPERATURE IS 120°C TO 160°C, 120 SECONDS TO 180 SECONDS. PEAK WAVE SOLDERING TEMPERATURE IS 260°C MAX, 10 SECONDS MAX.

4G01 GIGABIT MAGNETIC CIRCUIT



Suggested Panel Cutout



Suggested PCB Layout (Component Side)

C1 = 1000 pF, 2kV CAPACITOR
R1-R4 = 75 OHMS, 1/16W RESISTORS

YES		6605434-1	
DRY DECOUPLING CAPACITOR		PART NUMBER	
THIS DRAWING IS A CONTROLLED DOCUMENT		TE Connectivity	
REVISED	DATE	REVISED	DATE
1	108-2100	1	108-2100
DESCRIPTION		DESCRIPTION	
1X1 MAGJACK(TM), MODULAR JACK (10 PIN HORZ), 4G1 SCHEMATIC, 4G01 GIGABIT CIRCUIT, SHIELDED, ORIGINAL DECOUPLING CAPACITOR, NO LEADS		1X1 MAGJACK(TM), MODULAR JACK (10 PIN HORZ), 4G1 SCHEMATIC, 4G01 GIGABIT CIRCUIT, SHIELDED, ORIGINAL DECOUPLING CAPACITOR, NO LEADS	
PART NUMBER		PART NUMBER	
A100779-6605434		A100779-6605434	
CUSTOMER DRAWING		CUSTOMER DRAWING	