

## Excellent Integrated System Limited

Stocking Distributor

Click to view price, real time Inventory, Delivery & Lifecycle Information:

[Molex Connector Corporation](#)  
[1300120113](#)

For any questions, you can email us directly:

[sales@integrated-circuit.com](mailto:sales@integrated-circuit.com)

Mini-Change® Cordsets

9P 10P & 12P



# Double-Ended Cordsets

#16 AWG yellow ST00W cable – U.S. color code

Oil-resistant PVC jacket

Low-resistance contact design with gold/palladium nickel plating

	9P	10P	12P
FEMALE FACE VIEW			
COLOR CODE	1- orange      6- red 2- blue        7- green-gnd 3- red-black trace    8- white-black trace 4- green-black trace   9- black 5- white	1- orange      6- orange-black trace 2- blue        7- red 3- white-black trace   8- green-gnd 4- red-black trace    9- black 5- green-black trace   10- white	1- orange      7- blue-black trace 2- blue        8- black-white trace 3- white-black trace   9- green-gnd 4- red-black trace    10- red 5- green-black trace   11- white 6- orange-black trace   12- black
VOLTAGE	600V AC/DC	600V AC/DC	600V AC/DC
CURRENT	7A	7A	5A
CONDUCTOR	#16-9	#16-10	#16-12

FEMALE/MALE	FIG	DOUBLE-ENDED CORDSETS WITH #16 AWG ST00W CABLE 3 FEET LONG		
STRAIGHT/STRAIGHT	1	339020A01F030	331020A01F030	332020A01F030
90°/STRAIGHT	2	339021A01F030	331021A01F030	332021A01F030
STRAIGHT/90°	3	339022A01F030	331022A01F030	332022A01F030
90°/90°	4	339023A01F030	331023A01F030	332023A01F030

### CATALOG OPTIONS

Use the following chart to modify your part's specifications

**339020A01F0301**

**CABLE LENGTH**

6'	060
12'	120
20'	200

**COUPLING NUT**

STAINLESS STEEL . . . . .ADD 1

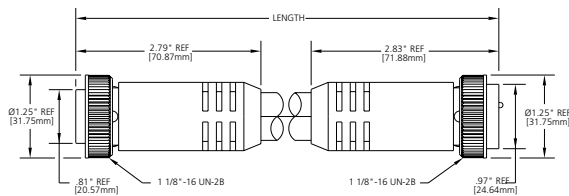
# Specifications



<b>MECHANICAL</b>	
CONNECTOR FACE:	PVC - UL STD 94 - V0
MOLDED BODY:	PVC - UL STD 94 - V0
COUPLING NUT:	ZINC DIECAST W/ BLACK EPOXY COAT, OPTIONAL STAINLESS STEEL TYPE 303
CABLE:	YELLOW, #16 AWG, PVC JACKET & PVC CONDUCTOR INSULATION OVER 65 X #34 COPPER STRANDING, 600V, UL STYLE ST00W CSA ST
OUTSIDE DIAMETER:	9P - .64" (16.3mm) 10P - .66" (16.8mm) 12P - .71" (18.0mm)
<b>ELECTRICAL</b>	
VOLTAGE RATING:	600 V AC/DC
AMPERAGE:	9P - 7A 10P - 7A 12P - 5A
<b>ENVIRONMENTAL</b>	
PROTECTION:	IP 68, NEMA 6P
AMBIENT OPERATING TEMP:	-4° to 221° F (-20° to 105° C)
<b>CERTIFICATIONS</b>	
UL:	UL RECOGNIZED, FILE NO. E46237
CSA:	CSA CERTIFIED, FILE NO. LR6837

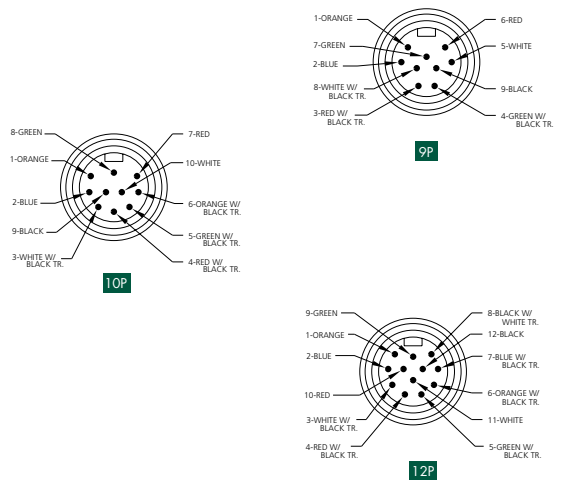
## CONNECTOR DIMENSIONS

FEMALE STRAIGHT/MALE STRAIGHT

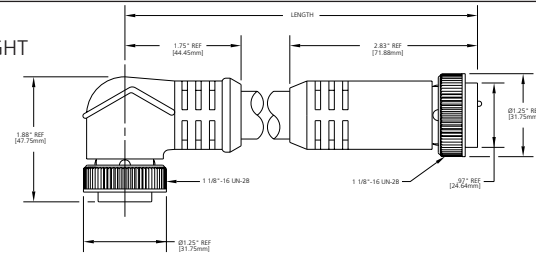


**FIG 1**

MALE FACE VIEW

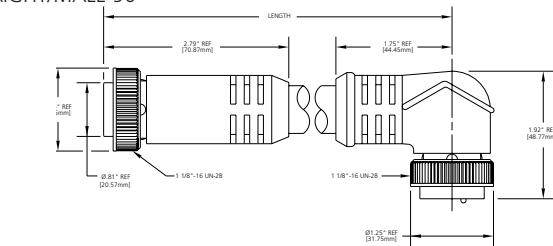


FEMALE 90°/MALE STRAIGHT



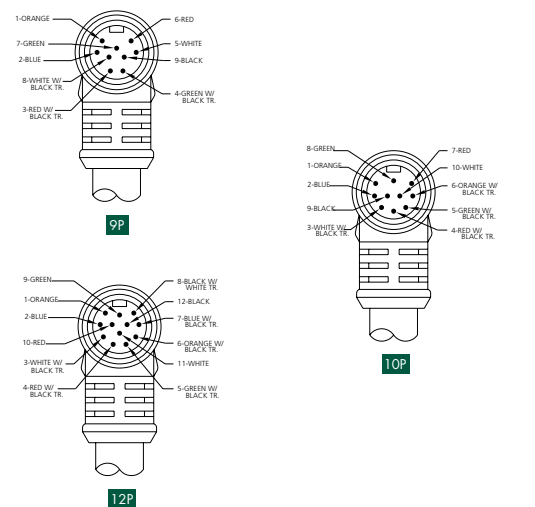
**FIG 2**

FEMALE STRAIGHT/MALE 90°

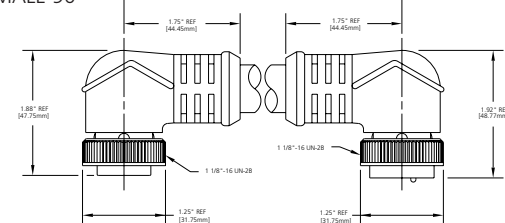


**FIG 3**

MALE FACE VIEW



FEMALE 90°/MALE 90°



**FIG 4**