



**Distributor of CTS Electronic Components: Excellent Integrated System Limited**

Datasheet of 4100-002LF - FILTER EMI 1500 PF PI TYPE

Contact us: [sales@integrated-circuit.com](mailto:sales@integrated-circuit.com) Website: [www.integrated-circuit.com](http://www.integrated-circuit.com)

---

## **Excellent Integrated System Limited**

Stocking Distributor

Click to view price, real time Inventory, Delivery & Lifecycle Information:

[CTS Electronic Components](#)

[4100-002LF](#)

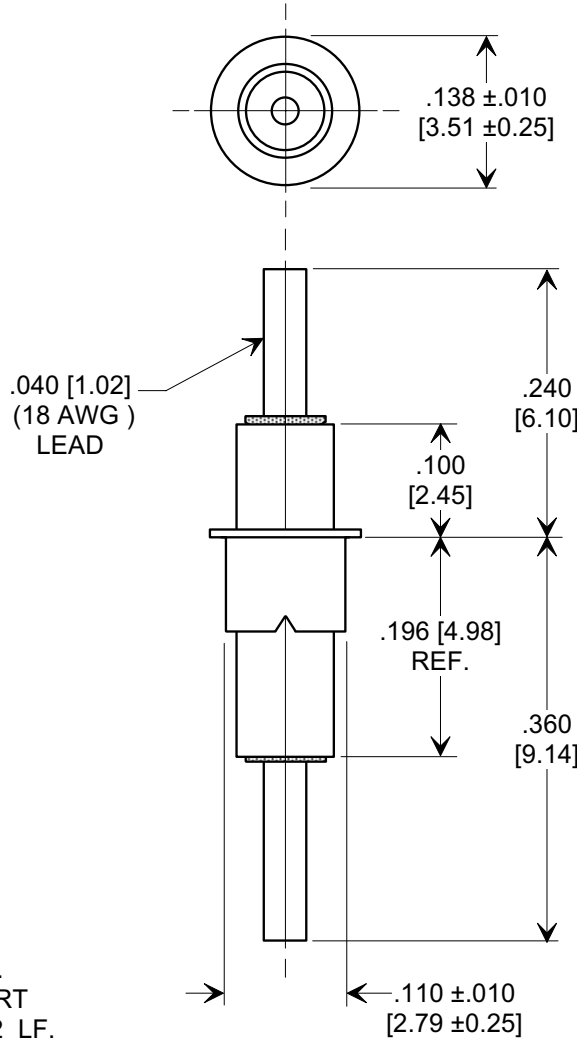
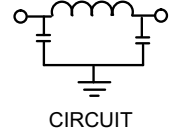
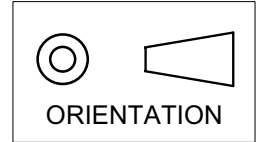
For any questions, you can email us directly:

[sales@integrated-circuit.com](mailto:sales@integrated-circuit.com)

**MARKETING SALES DRAWING**

**DIMENSIONS IN INCHES - DO NOT SCALE THIS DRAWING**  
**DIMENSIONS IN METRIC - [ ]**

Electrical Testing  
 per Tusonix standard  
 test plans and Mil-Std-202  
 Test Methods.



**NOTES:**

- TUSONIX STANDARD PART  
 NUMBER: 4100-002.  
 TUSONIX RoHS COMPLIANT PART  
 NUMBER: 4100-002 LF.  
 CUSTOMER MUST SPECIFY STANDARD OR  
 RoHS PART NUMBER WHEN ORDERING.
- LEAD FINISH: STANDARD PART #: 60/40 SOLDER PLATED.  
 RoHS PART #: SILVER PLATED.
- EYELET FINISH: STANDARD PART #: 60/40 SOLDER PLATED.  
 RoHS PART #: SILVER PLATED.
- PART MARKING: STANDARD, NO MARKING.  
 RoHS PART: GREEN DOT ON INSULATION BAND,  
 TYPICAL LOCATION.

MIN. CAP. pF	WORKING VOLTAGE		CURRENT Idc.	I.R. MIN. @ 100 (VDC.)	DWV (VDC)	MINIMUM NO LOAD INSERTION LOSS (dB) AT 25°C PER MIL-STD-220			
	85°C	125°C				10 MHz	100 MHz	1 GHz	10 GHz
1500	350	200	15 A	10 G	700	5	25	60	60

X-2015 Rev-0

<b>REVISION RECORD</b>	Original Release C.O. <b>1653</b>			--TOLERANCES-- Unless Otherwise Specified	Title <b>EYELET STYLE EMI FILTER</b>	
	CURRENT UNIT "A" ADDED L.I.: 08-20-85	1	2	DECIMAL ± .031 [0.79]	Drawn S.M. 07-13-00	Scale 6 X
	RND TO COMP FMT. S.M. 07-18-00	2595	20000717-5-06	ANGLES ±	Approved T.C. 07-13-00	
	ADDED NOTES, IR, DWV & CIRCUIT. S.M. 06-06-05			<b>TUSONIX</b> TUCSON, ARIZONA	<b>A</b>	<b>4100-002</b>
		20050526-4-06				