



**Distributor of CTS Electronic Components: Excellent Integrated System Limited**

Datasheet of 4106-000LF - FILTER EMI 3000 PF PI TYPE

Contact us: [sales@integrated-circuit.com](mailto:sales@integrated-circuit.com) Website: [www.integrated-circuit.com](http://www.integrated-circuit.com)

---

## **Excellent Integrated System Limited**

Stocking Distributor

Click to view price, real time Inventory, Delivery & Lifecycle Information:

[CTS Electronic Components](#)

[4106-000LF](#)

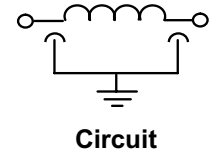
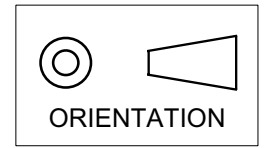
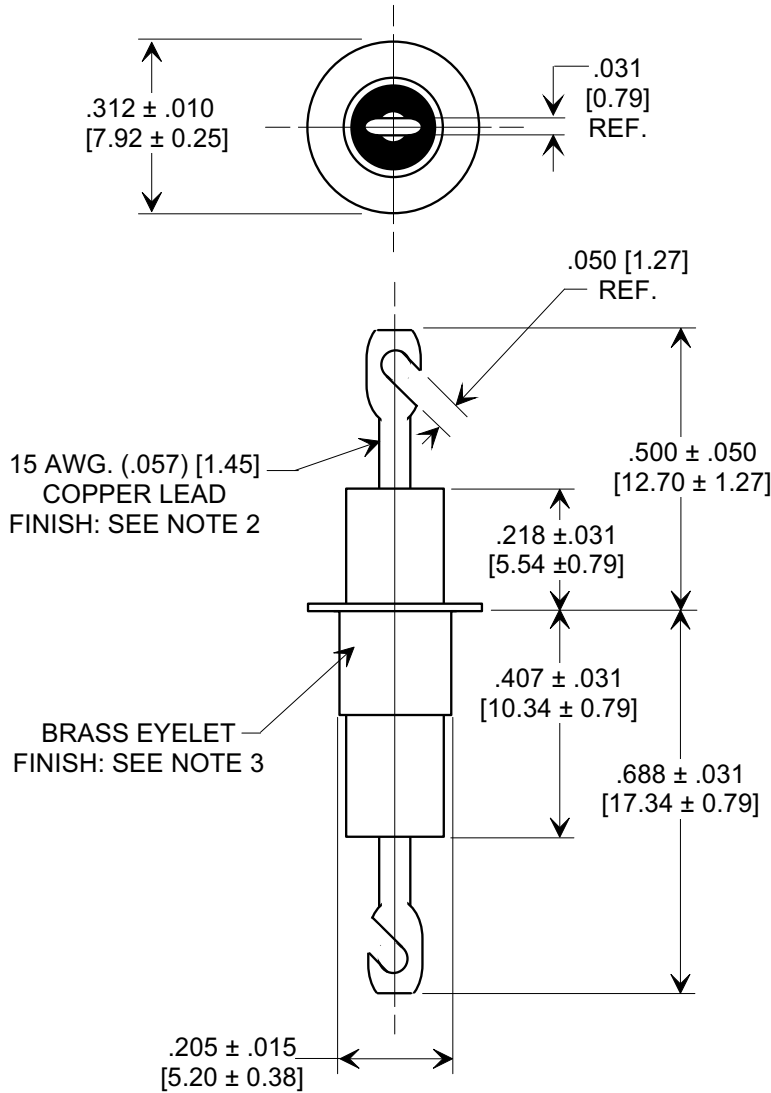
For any questions, you can email us directly:

[sales@integrated-circuit.com](mailto:sales@integrated-circuit.com)

**MARKETING SALES DRAWING**

**DIMENSIONS IN INCHES - DO NOT SCALE THIS DRAWING**  
**DIMENSIONS IN METRIC - [ ]**

Electrical Testing  
 per Tusonix standard  
 test plans and Mil-Std-202  
 Test Methods.



**NOTES:**

- TUSONIX STANDARD PART NUMBER: 4106-000.  
 TUSONIX RoHS COMPLIANT PART NUMBER: 4106-000 LF.  
 CUSTOMER MUST SPECIFY STANDARD OR RoHS PART NUMBER WHEN ORDERING.
- LEAD FINISH: STANDARD PART #: 60/40 SOLDER PLATED. RoHS PART #: SILVER PLATED.
- EYELET FINISH: STANDARD PART #: 60/40 SOLDER PLATED. RoHS PART #: SILVER PLATED.
- PART MARKING: STANDARD PART: NO MARKING. RoHS PART: GREEN DOT IDENTIFIER.

MIN. CAP (pF)	WORKING VOLTAGE (WVDC)		CURRENT Idc	I.R. MIN. @ 100 (VDC)	DWV	MINIMUM NO-LOAD INSERTION LOSS			
	85°C	125°C				10 MHz	100 MHz	1 GHz	10 GHz
3000	500 DC 350 AC	500 DC 350 AC	25A	10 G	1250 VDC	----	50	50	50

X-2015-Rev-0 REVISION RECORD Original Release C.O. 20040219-2-01 ADDED NOTES 1-4. S.M. 07-26-05 20050718-3-02	0	1	--TOLERANCES-- Unless Otherwise Specified  DECIMAL ± ANGLES ±	Title <b>EYELET STYLE EMI FILTER</b>	
	Drawn L.E. 02-19-04 Scale 3 X				
	Approved T.C. 02-19-04		A	4106-000	
	 TUCSON, ARIZONA				