



Distributor of CTS Electronic Components: Excellent Integrated System Limited

Datasheet of 4106-001LF - FILTER EMI 4500 PF PI TYPE

Contact us: sales@integrated-circuit.com Website: www.integrated-circuit.com

Excellent Integrated System Limited

Stocking Distributor

Click to view price, real time Inventory, Delivery & Lifecycle Information:

[CTS Electronic Components](#)

[4106-001LF](#)

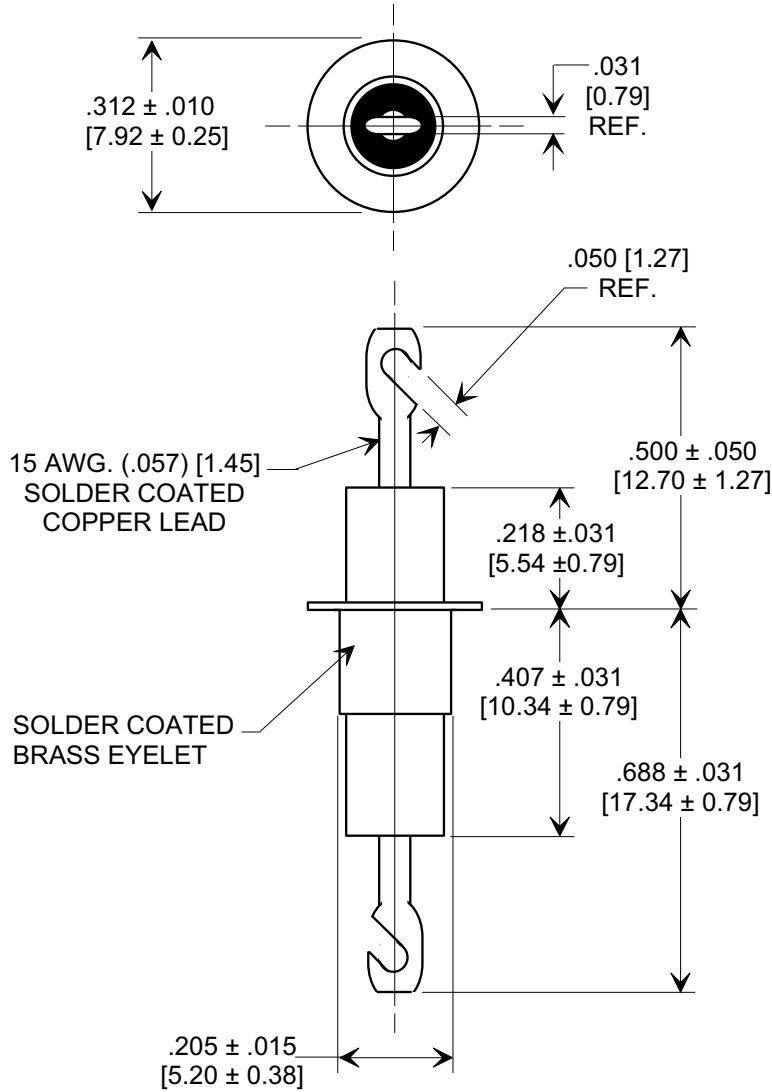
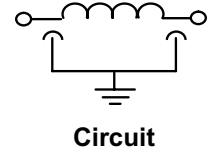
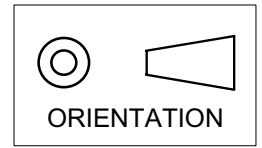
For any questions, you can email us directly:

sales@integrated-circuit.com

MARKETING SALES DRAWING

DIMENSIONS IN INCHES - DO NOT SCALE THIS DRAWING
DIMENSIONS IN METRIC - []

Electrical Testing
 per Tusonix standard
 test plans and Mil-Std-202
 Test Methods.



MIN. CAP (pF)	WORKING VOLTAGE (WVDC)		CURRENT Idc	I.R. MIN. @ 100 (VDC)	DWV	MINIMUM NO-LOAD INSERTION LOSS			
	85°C	125°C				10 MHz	100 MHz	1 GHz	10 GHz
4500	1000	500	25A	10 G Ω	1500 VDC	8	50	70	70

X-2015 Rev-0

REVISION RECORD	0	DIM'S REV'D .500 ± .050 WAS ± .031 & [5.20] WAS [5.21], TOL'S ± .031 DELETED L.E. 02-19-04
	1	20040219-3-01

--TOLERANCES-- Unless Otherwise Specified		Title EYELET STYLE EMI FILTER	
DECIMAL ± $\frac{\quad}{\quad}$		Drawn S.M. 12-01-03 Scale 3 X	
ANGLES ± $\frac{\quad}{\quad}$		Approved T.C. 12-01-03	
		A	4106-001