



Distributor of CTS Electronic Components: Excellent Integrated System Limited

Datasheet of 4202-000LF - FILTER EMI 1500 PF PI TYPE

Contact us: sales@integrated-circuit.com Website: www.integrated-circuit.com

Excellent Integrated System Limited

Stocking Distributor

Click to view price, real time Inventory, Delivery & Lifecycle Information:

[CTS Electronic Components](#)

[4202-000LF](#)

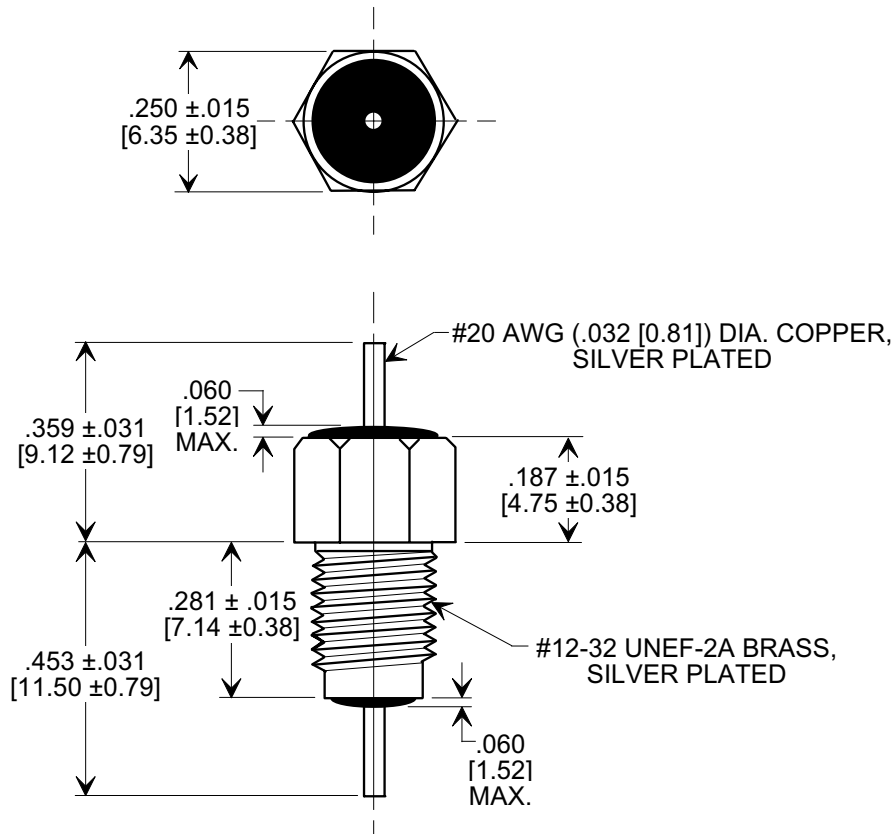
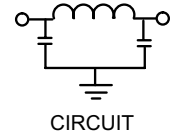
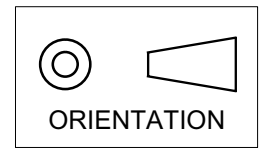
For any questions, you can email us directly:

sales@integrated-circuit.com

MARKETING SALES DRAWING

DIMENSIONS IN INCHES - DO NOT SCALE THIS DRAWING
DIMENSIONS IN METRIC - []

Electrical Testing
 per Tusonix standard
 test plans and Mil-Std-202
 Test Methods.



NOTES:

- SUPPLIED WITH SILVER PLATED HEX NUT AND LOCK WASHER.
 - TUSONIX STANDARD PART NUMBER: 4202-000.
 TUSONIX RoHS COMPLIANT PART NUMBER: 4202-000 LF.
 CUSTOMER MUST SPECIFY STANDARD OR RoHS PART NUMBER WHEN ORDERING.
 - PART MARKING: TRADEMARK AND VARIATION NUMBER ON HEX FLATS.
- STANDARD PART: BLACK INK. RoHS PART: GREEN INK.

MIN. CAP. (pF)	WORKING VOLTAGE (WVdc)		CURRENT (Idc)	DWV (VDC)	I.R. MIN. @ 100 VDC	MINIMUM NO LOAD INSERTION LOSS (dB) AT 25°C PER MIL-STD -220			
	85°C	125°C				10 MHz	100 MHz	1 GHz	10 GHz
1500	350	200	10 A	700	10 G	5	45	70	70

X-2015 Rev-0	REVISION RECORD					--TOLERANCES-- Unless Otherwise Specified	Title		
	0	1	2	3	4		BUSHING STYLE EMI FILTER		
	Original Release C.O.	WAS SK 6644-000-S. L.E. 01-13-84	DIM'S & TOL'S REV'D RELEASED. L.E. 1-8-85	1653 CURRENT UNIT "A" ADDED. L.E. 08-20-85	2595 RDN TO COMP FMT & ADDED METRIC. S.M. 02-12-02	20020213-3-08 ADDED NOTES 2 & 3. REF TO PLATING ON LEAD & BUSHING ADDED. S.M. 05-18-05	20050503-6-10	Drawn S.M. 02-12-02	Scale 3 X
	TUSONIX						Approved T.C. 02-12-02	A	
	TUCSON, ARIZONA						4202-000		