



Distributor of CTS Electronic Components: Excellent Integrated System Limited

Datasheet of 4208-000LF - FILTER EMI 1500 PF PI TYPE

Contact us: sales@integrated-circuit.com Website: www.integrated-circuit.com

Excellent Integrated System Limited

Stocking Distributor

Click to view price, real time Inventory, Delivery & Lifecycle Information:

[CTS Electronic Components](#)

[4208-000LF](#)

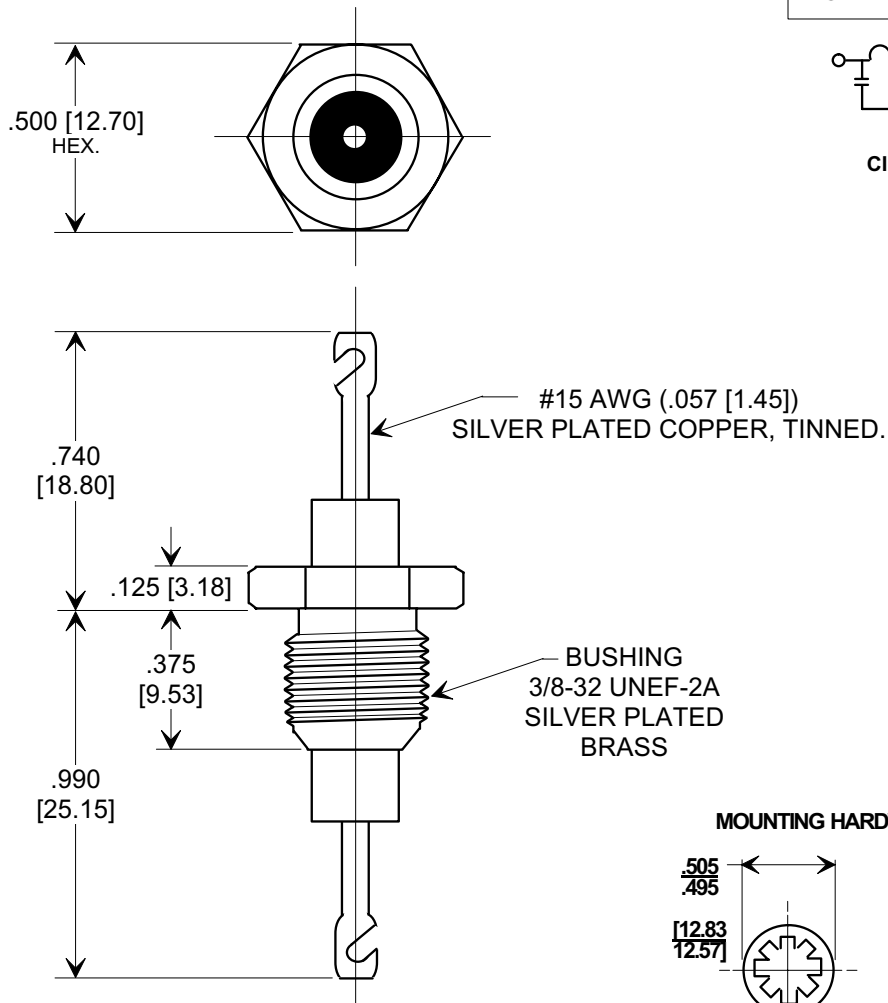
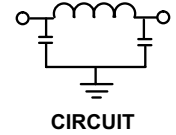
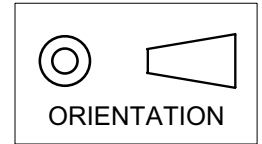
For any questions, you can email us directly:

sales@integrated-circuit.com

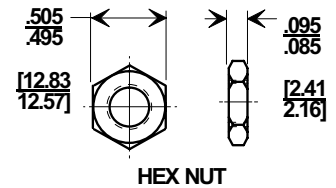
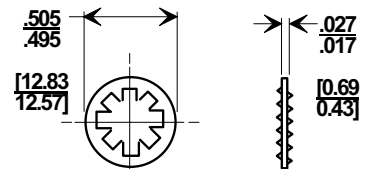
MARKETING SALES DRAWING

DIMENSIONS IN INCHES - DO NOT SCALE THIS DRAWING

Electrical Testing
 per Tusonix standard
 test plans and Mil-Std-202
 Test Methods.



MOUNTING HARDWARE



NOTES:

- TUSONIX STANDARD PART NUMBER: 4208-000.
 TUSONIX RoHS COMPLIANT PART NUMBER: 4208-000 LF.
 CUSTOMER MUST SPECIFY STANDARD OR RoHS PART NUMBER
 WHEN ORDERING.
- SUPPLIED WITH SILVER PLATED LOCK WASHER AND NUT.
- PART MARKING: TRADEMARK AND VARIATION NUMBER ON HEX FLATS.
 STANDARD PART: BLACK INK. RoHS PART: GREEN INK.

MIN. Cx.	WORKING VOLTAGE		DWV (VDC)	CURRENT IDC	MINIMUM NO LOAD INSERTION LOSS (dB) AT 25°C PER MIL-STD-220			
	85° C	125° C			10MHz	100MHz	1GHz	10 GHz
1500 pF	2500	2000	5 KV	25A	5	50	50	50

X-2015 Rev-0

REVISION RECORD	Original Release C.O.	0	--TOLERANCES-- Unless Otherwise Specified DECIMAL ± .031 [0.79] ANGLES ±	Title		HI-VOLTAGE EMI FILTER		
	WAS SK 6959-000. KLJ 5-1-90	1		Drawn	S.M. 05-28-02	Scale	2 X	
	REISSUE -375 DIM. WAS .347. KLJ. 5-4-90	2		Approved	J.Mc. 05-28-02			
	ADDED COLUMN (IDC) & HARDWARE. E.C. 07-03-90	3		 TUCSON, ARIZONA	A	4208-000		
	ADDED NOTES. S.M. 07-27-05	4						
ADDED NOTES. S.M. 07-27-05	5							