



Distributor of CTS Electronic Components: Excellent Integrated System Limited

Datasheet of 4209-003LF - FILTER EMI 1500 PF PI TYPE

Contact us: sales@integrated-circuit.com Website: www.integrated-circuit.com

Excellent Integrated System Limited

Stocking Distributor

Click to view price, real time Inventory, Delivery & Lifecycle Information:

[CTS Electronic Components](#)

[4209-003LF](#)

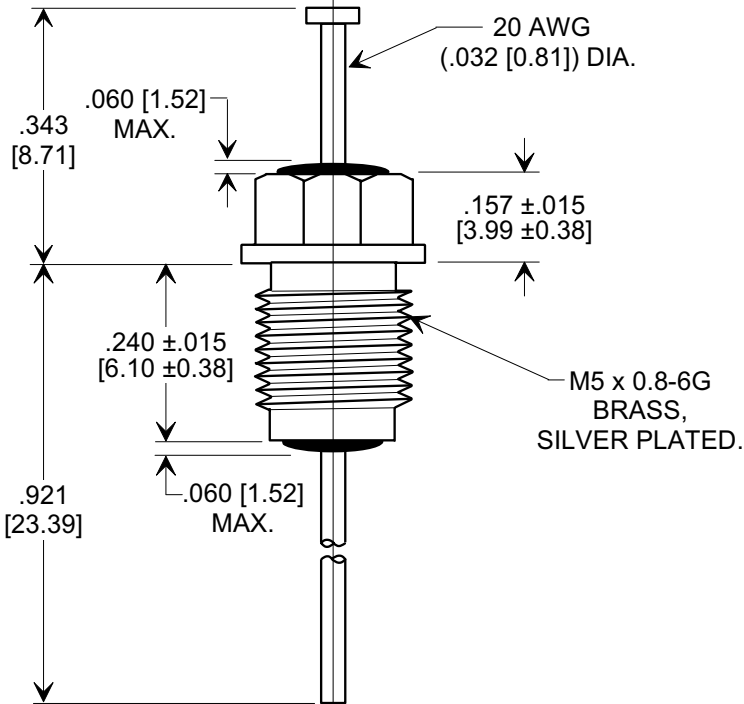
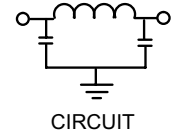
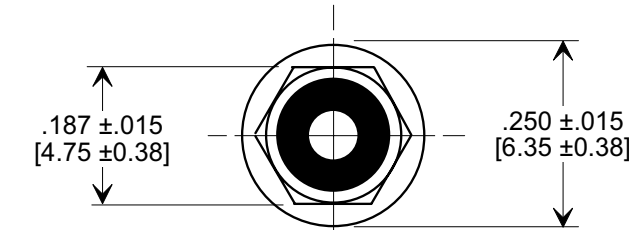
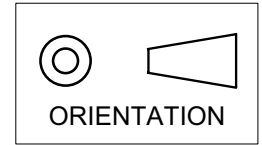
For any questions, you can email us directly:

sales@integrated-circuit.com

MARKETING SALES DRAWING

DIMENSIONS IN INCHES - DO NOT SCALE THIS DRAWING
DIMENSIONS IN METRIC - []

Electrical Testing
 per Tusonix standard
 test plans and Mil-Std-202
 Test Methods.



NOTES:

- TUSONIX STANDARD PART NUMBER: 4209-003.
 TUSONIX RoHS COMPLIANT PART NUMBER: 4209-003 LF.
 CUSTOMER MUST SPECIFY STANDARD OR RoHS PART NUMBER WHEN ORDERING.
- LEAD FINISH: STANDARD PART #: 60/40 SOLDER PLATED. RoHS PART #: SILVER PLATED.
- PART MARKING: TRADEMARK AND VARIATION NUMBER ON HEX FLATS.
 STANDARD PART: BLACK INK. RoHS PART: GREEN INK.
- SUPPLIED WITH SILVER PLATED HEX NUT AND INTERNAL TOOTH LOCK WASHER.

MIN. CAP. (pF)	WORKING VOLTAGE (VVdc)		CURRENT IDC	MINIMUM NO LOAD INSERTION LOSS (dB) AT 25°C PER MIL-STD -220			
	85°C	125°C		10 MHz	100 MHz	1 GHz	10 GHz
1500	350	200	10 A	5	45	70	70

X-2015 Rev-0 REVISION RECORD Original Release C.O. 4668 RDN TO COMP FMT. S.M. 05-09-00 2000508-3-01 ADDED NOTES. S.M. 05-29-05 20050727-2-02	0	 TUCSON, ARIZONA -- TOLERANCES -- Unless Otherwise Specified 2 Place Decimal 3 Place Decimal .031 Angles	Title BUSHING STYLE EMI FILTER		
			Drawn S.M. 05-09-00		
			Approved T.C. 05-09-00		
			A	4209-003	