



Distributor of CTS Electronic Components: Excellent Integrated System Limited

Datasheet of 4251-002LF - FILTER EMI 12000 PF PI TYPE

Contact us: sales@integrated-circuit.com Website: www.integrated-circuit.com

Excellent Integrated System Limited

Stocking Distributor

Click to view price, real time Inventory, Delivery & Lifecycle Information:

[CTS Electronic Components](#)

[4251-002LF](#)

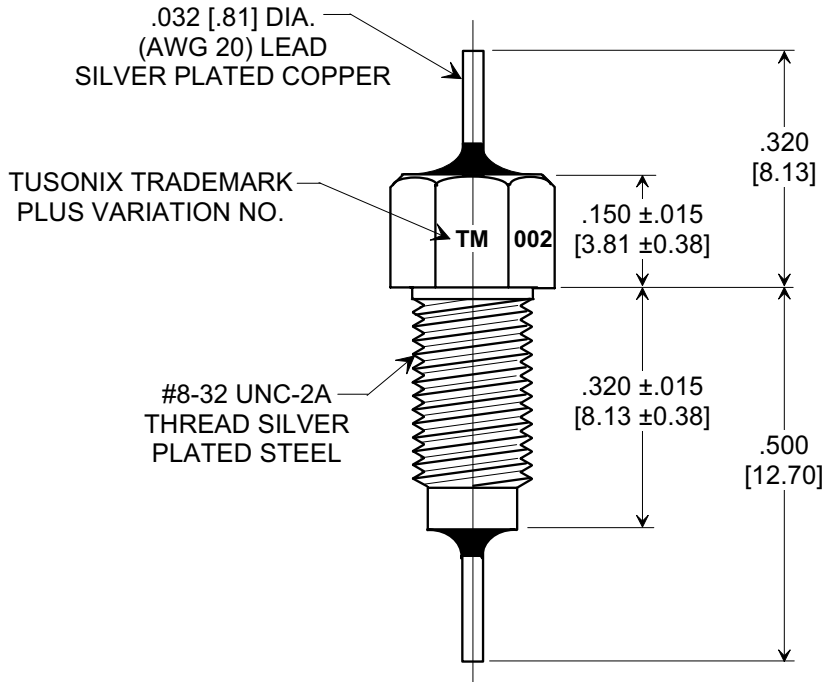
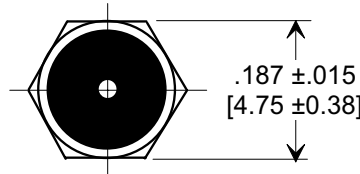
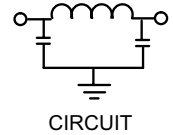
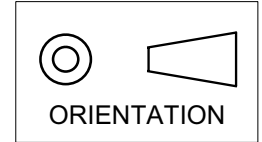
For any questions, you can email us directly:

sales@integrated-circuit.com

MARKETING SALES DRAWING

DIMENSIONS IN INCHES - DO NOT SCALE THIS DRAWING
DIMENSIONS IN METRIC []

Electrical Testing
 per Tusonix standard
 test plans and Mil-Std-202
 Test Methods.



NOTES:

- TUSONIX STANDARD PART NUMBER: 4251-002.
 TUSONIX RoHS COMPLIANT PART NUMBER: 4251-002 LF.
 CUSTOMER MUST SPECIFY STANDARD OR RoHS PART NUMBER WHEN ORDERING.
- PART MARKING: TRADEMARK AND VARIATION NUMBER ON HEX FLATS.
 STANDARD PART: BLACK INK. RoHS PART: GREEN INK.
- SUPPLIED WITH SILVER PLATED COPPER ALLOY HEX NUT AND INTERNAL TOOTH LOCK WASHER.

MIN. CAP.	125°C WORKING VOLTAGE	CURRENT Vdc	IR MIN.	DWV	MINIMUM NO LOAD INSERTION LOSS (dB) @ 25°C PER MIL-STD-220				
					1 MHz	10 MHz	100 MHz	1 GHz	10 GHz
12,000 pF	125 VDC	10 A	10 G Ω	500 VDC	5	28	65	70	70

X-2015 Rev-0

REVISION RECORD	Original Release C.O. 6611	DIM'S REVISED, TITLE CHNGD. E.C. 05-26-92 6667 RDN TO COMP FMT & ADDED 015.TOL.3 PLCS. S.M. 02-28-02 20020415-1-01 NOTE 1 ADDED, & STEEL WAS BRASS, & TITLE REVISED L.E. 06-25-02 20020415-1-01 ADDED NOTES 1-2. S.M. 10-06-05 20050927-7-04	--TOLERANCES-- Unless Otherwise Specified		Title MULTILAYER BUSHING STYLE EMI FILTER		
			DECIMAL ± .031 [0.79]	Drawn S.M. 02-28-02		Scale 4 X	
			ANGLES ±	 TUCSON, ARIZONA		Approved T.C. 02-28-02	
						A	4251-002