

## Excellent Integrated System Limited

Stocking Distributor

Click to view price, real time Inventory, Delivery & Lifecycle Information:

[CTS Electronic Components](#)

[4600-050LF](#)

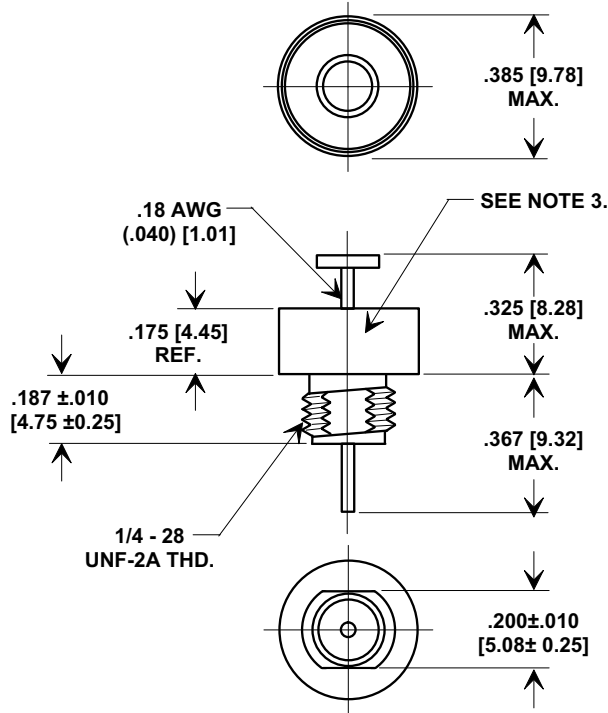
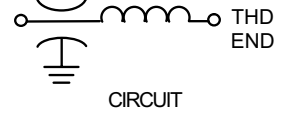
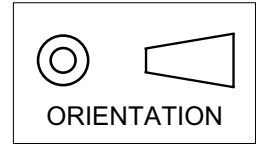
For any questions, you can email us directly:

[sales@integrated-circuit.com](mailto:sales@integrated-circuit.com)

**MARKETING SALES DRAWING**

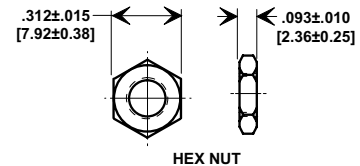
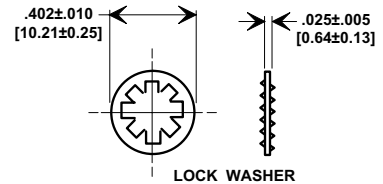
**DIMENSIONS IN INCHES - DO NOT SCALE THIS DRAWING**  
**DIMENSIONS IN METRIC - [ ]**

Electrical Testing  
 per Tusonix standard  
 test plans and Mil-Std-202  
 Test Methods.



**NOTES:**

- TUSONIX STANDARD PART NUMBER: 4600-050.  
 TUSONIX RoHS COMPLIANT PART NUMBER: 4600-050 LF.  
 CUSTOMER MUST SPECIFY STANDARD OR RoHS PART NUMBER WHEN ORDERING.
- MATERIALS:  
 BUSHING - TIN PLATED STEEL.  
 LEAD STANDARD PART; SOLDER PLATED COPPER.  
 RoHS PART; SILVER PLATED COPPER.  
 NUT - TIN PLATED BRASS.  
 L"WASHER - TIN PLATED PHOSPHOR BRONZE.
- PART MARKING: TRADEMARK AND VARIATION NUMBER.  
 STANDARD PART: BLACK INK. RoHS PART: GREEN INK.
- MOUNTING TORQUE: 8 lb - ins. max.
- DCR - .01 max.
- MAX. SOLDER TEMPERATURE 500°F.



MIN. CAP (UF)	DWV (VDC)	I.R. MIN. @ 100 (VDC.)	WORKING VOLTAGE D.C.		CURRENT DC (AMPS)	MIN. NO LOAD INSERTION LOSS (dB) @ 25°C PER MIL-STD-220						TEMP. CHARAC.
			85°C	125°C		30 KHz	100 KHz	300 KHz	1 MHz	10 MHz	1 GHz	
1.4	300	10 G	100	70	15	15	25	34	44	60	70	X7W

<b>REVISION RECORD</b> Original Release C.O. <b>6769</b> METRIC DIMS & NOTES ADDED. E.C. 7-17-92 <b>6789</b> WVDC REVISED 100 & 70 WERE 80 & 50. L.E. 10-26-92 <b>6992</b> RDN TO COMP FMT. S.M. 02-14-02 <b>20020213-4-03</b> WORKING VOLTAGE REV'D 100, 70 WERE 80, 50 & TEMP. CHARAC. ADDED <b>20020903-1-02</b> ADDED NOTES 1 & 3. REVISED NOTE 2. S.M. 06-24-05 <b>20050608-2-02</b>	--TOLERANCES-- Unless Otherwise Specified		Title <b>COAXIAL BROADBAND - "C"</b>	
	DECIMAL ±		Drawn S.M. 02-14-02 Scale 2 X	
	ANGLES ±		Approved T.C. 02-14-02	
	<b>TUSONIX</b> TUCSON, ARIZONA		<b>A</b>	
			<b>4600-050</b>	

X-2015 Rev-0