



**Distributor of CTS Electronic Components: Excellent Integrated System Limited**

Datasheet of M15733/49-0001 - FILTER EMI 0.68 UF L TYPE MIL

Contact us: [sales@integrated-circuit.com](mailto:sales@integrated-circuit.com) Website: [www.integrated-circuit.com](http://www.integrated-circuit.com)

---

## **Excellent Integrated System Limited**

Stocking Distributor

Click to view price, real time Inventory, Delivery & Lifecycle Information:

[CTS Electronic Components](#)

[M15733/49-0001](#)

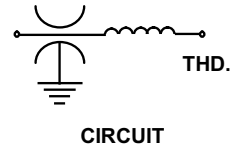
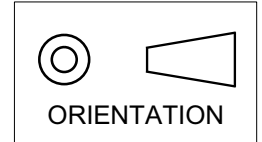
For any questions, you can email us directly:

[sales@integrated-circuit.com](mailto:sales@integrated-circuit.com)

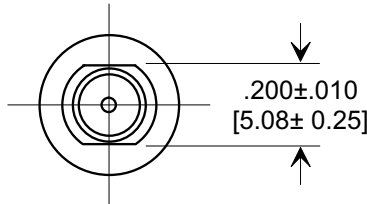
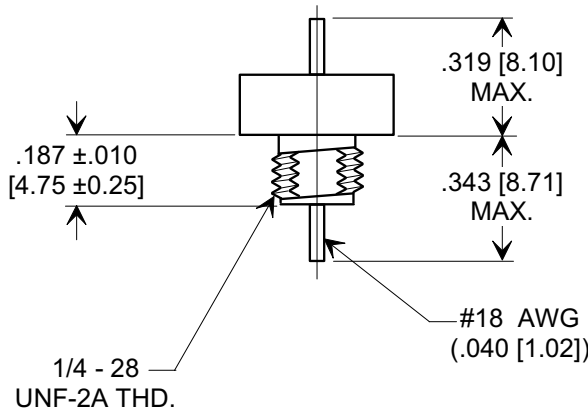
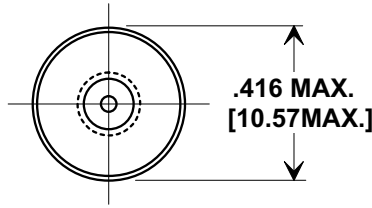
This drawing is the property of Tusonix, Inc., and may not be used, reproduced, published or disclosed to others without expressed authorization by Tusonix Inc.

**MARKETING SALES DRAWING**

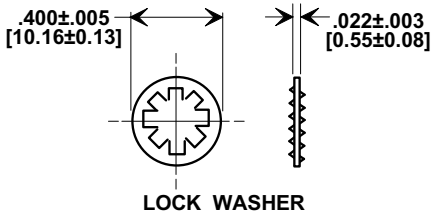
**DIMENSIONS IN INCHES - DO NOT SCALE THIS DRAWING**  
**DIMENSIONS IN METRIC - [ ]**



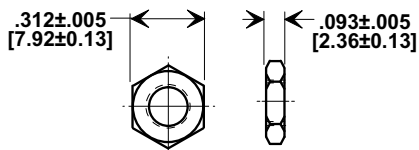
**Electrical Testing**  
per Tusonix standard  
test plans and Mil-Std-202  
Test Methods.



**MOUNTING HARDWARE**



LOCK WASHER



HEX NUT

**NOTES:**

**MATERIALS:**

- BUSHING - SILVER PLATED STEEL
- LEAD - SOLDER PLATED COPPER
- NUT - SILVER PLATED BRASS
- L'WASHER - SILVER PLATED PHOSPHOR BRONZE
- MOUNTING TORQUE: 8 lb - ins. max
- SEAL TESTED PER MIL-STD-202 METHOD 112 CONDITION A.
- VOLTAGE DROP 0.15 VDC MAX.
- MAX. SOLDER TEMPERATURE 500°F

REF. Cx (μF)	WVDC 125°C	CURRENT DC	DWV 125 VDC 60 SEC.	IR MIN. 10 GΩ	MIN. NO LOAD INSERTION LOSS (dB) PER MIL-STD 220 @ +25°C							
					30 KHz	150 KHz	300 KHz	1 MHz	10 MHz	100 MHz	10GHz	
0.68	50	15 A			8	20	28	38	55	70	70	

X-2015 Rev-0

REVISION RECORD  
Original Release  
C.O. ECO-654

--TOLERANCES--  
Unless Otherwise Specified

DECIMAL ±

ANGLES ±

**TUSONIX**  
TUCSON, ARIZONA

Title **MIL-15733/49-0001**  
**COAXIAL**  
**BROADBAND - "L"**

Drawn L.E. 04-09-09 Scale 2 X

Approved R.L. 04-09-09

**A** **4601-502**