

Excellent Integrated System Limited

Stocking Distributor

Click to view price, real time Inventory, Delivery & Lifecycle Information:

[CTS Electronic Components](#)

[M15733/61-0012](#)

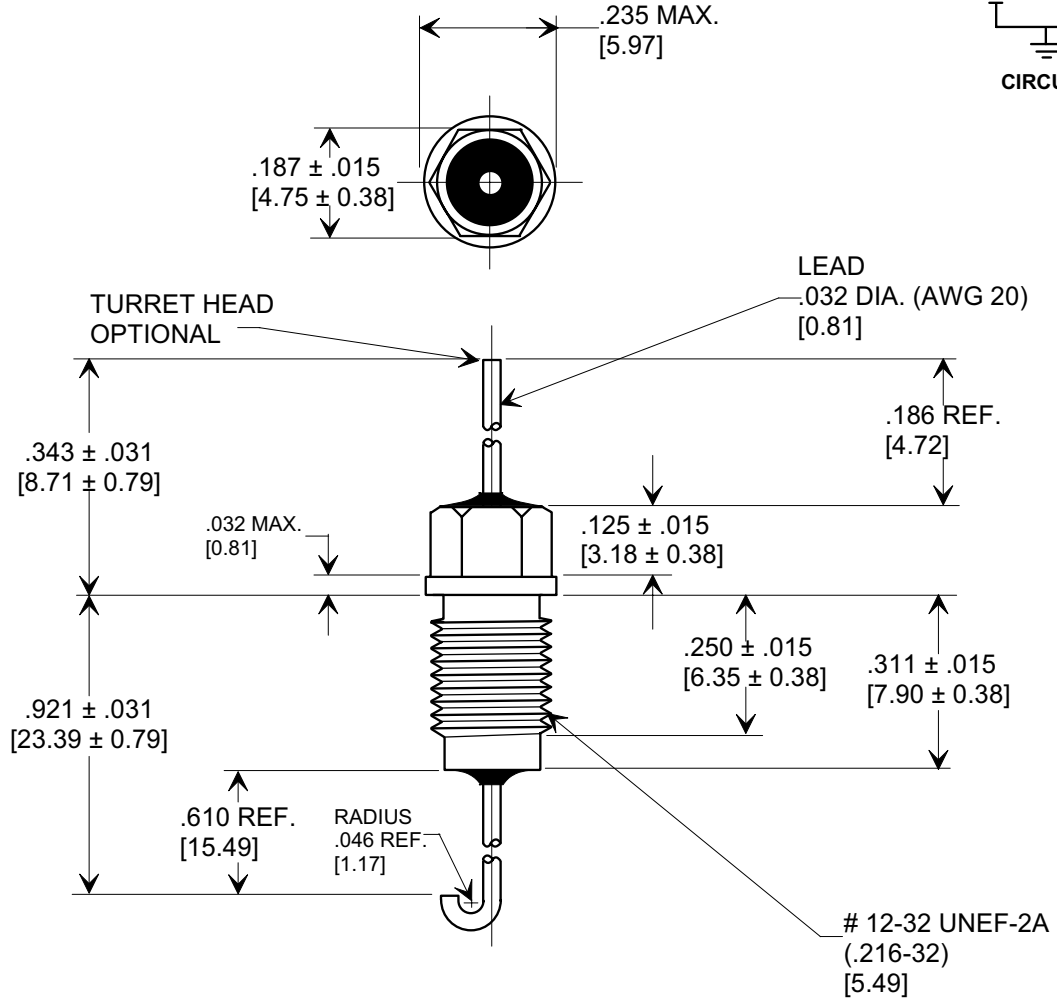
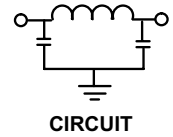
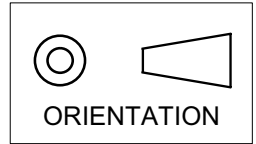
For any questions, you can email us directly:

sales@integrated-circuit.com

MARKETING SALES DRAWING

DIMENSIONS IN INCHES - DO NOT SCALE THIS DRAWING
DIMENSIONS IN METRIC - []

Electrical Testing
 per Tusonix standard
 test plans and Mil-Std-202
 Test Methods.



MIN. CAP.	+ 125 °C WORKING VOLTAGE	I.R. MIN. @ 100 VDC	DWV	CURRENT	MINIMUM NO LOAD INSERTION LOSS (dB) AT 25°C PER MIL-STD-220				
					5 MHz	20 MHz	50 MHz	1 GHz	10 GHz
25,000 pF	100 VDC	10 GΩ	250 VDC	10 A	15	60	60	65	65

X-2015 Rev-0	REVISION RECORD				--TOLERANCES-- Unless Otherwise Specified	Title	
	Original Release C.O.	WAS SK 7096-003-S EC. 6-14-93	0	DWG. REVISED EC. 5-25-94		EMI FILTER MIL 15733/61-0012	
	930528-2	940217-3	1	NAILHEAD RMVD. 5-1-96	Drawn		
	960409-5	RDN TO COMPUTER FORMAT L.E. 06-03-02	2	20020528-3-05	Approved	T.C. 06-03-02	
	REVISED DIM .610. S.M. 08-30-05	3	20020529-3-01	TUSONIX TUCSON, ARIZONA	A	4253-501	