

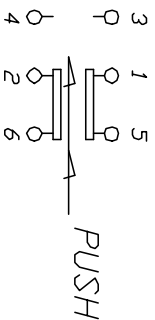
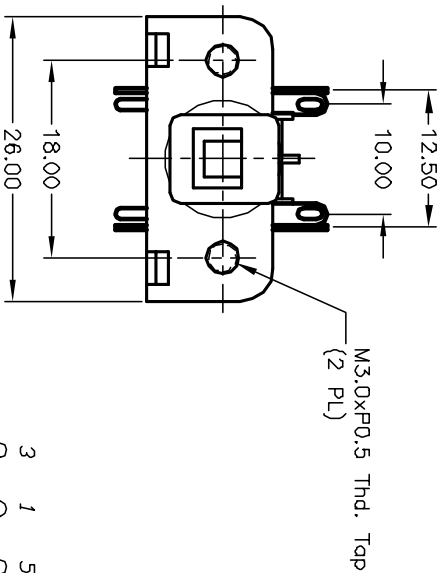
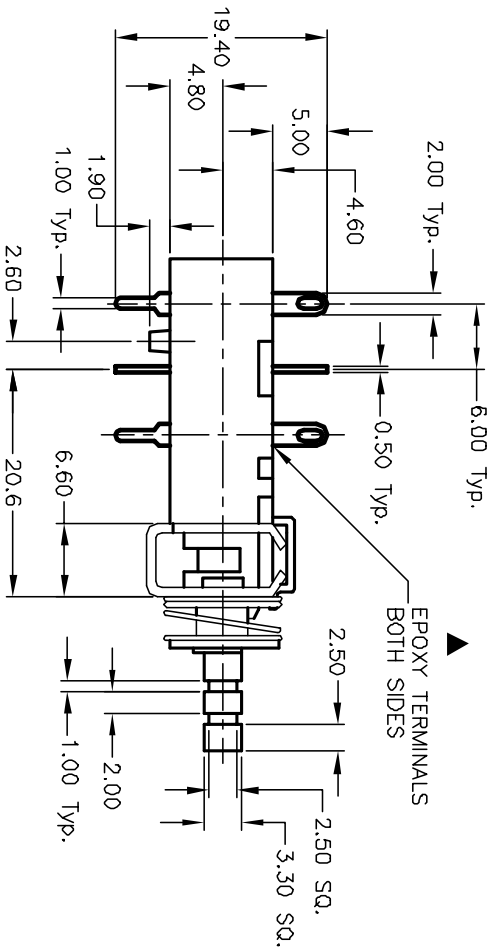
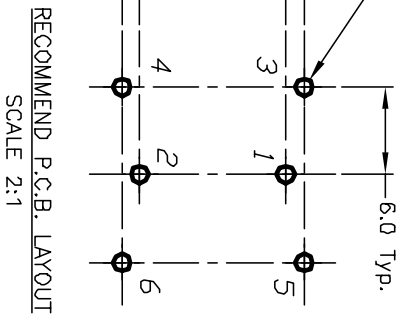
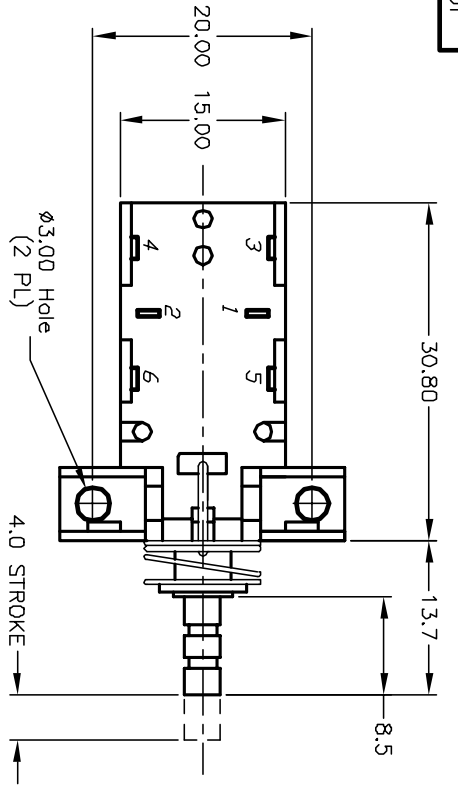
Excellent Integrated System Limited

Stocking Distributor

Click to view price, real time Inventory, Delivery & Lifecycle Information:

[E-Switch](#)
[P227EE2B18A](#)

For any questions, you can email us directly:
sales@integrated-circuit.com



NOTES:

1. ALL DIMENSIONS IN MM
2. GENERAL TOLERANCE: X.X=±0.4
X.XX=±0.25
3. TERM. NOS. FOR REF. ONLY
4. RATING: AC 125V 7A, AC 250V 4A
5. CONTACT MATERIAL: Silver Plated Copper Alloy
6. CONTACT RESISTANCE: 20m ohm max. at 5V DC 1A.
7. DIELECTRIC STRENGTH: AC 1500V RMS
8. LIFE EXPECTANCY: Electrical: 6,000 cycle
9. OPERATING FORCE: 550±150gf
10. TRAVEL: Full: 5.5mm, Lock: 4.0mm

REV.	ECN No.	DESCRIPTION	DATE	CHKD
B	11766	REVISED PART DESCRIPTION	10/19/01	CB

TITLE	SCALE	DATE	DR	DWG	REV
P227 EE 2B 18A (LATCHING)	1.5:1	10/19/01	CB	P030104	B

E-SWITCH®

THE INFORMATION CONTAINED IN THIS DOCUMENT IS PROPRIETARY TO E-SWITCH AND IS NOT TO BE COPIED OR TRANSMITTED