

Excellent Integrated System Limited

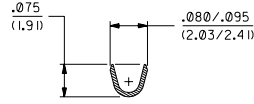
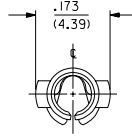
Stocking Distributor

Click to view price, real time Inventory, Delivery & Lifecycle Information:

[Molex Connector Corporation](#)
[02-09-5147](#)

For any questions, you can email us directly:
sales@integrated-circuit.com

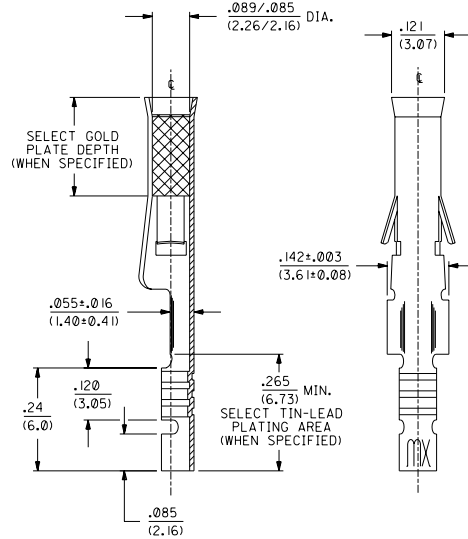
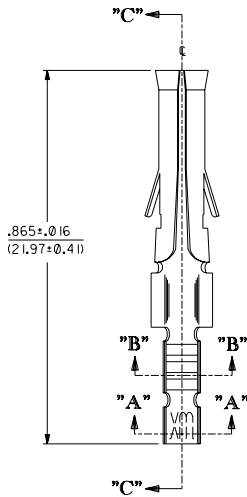
| PART NO. | ENG. NO. |
|------------|---------------|
| 02-09-1142 | I433-A(P90)I |
| 02-09-1144 | I433-A(P90)IL |
| 02-09-5146 | I433-A(P550) |
| 02-09-5147 | I433-A(P550)L |
| 02-09-5165 | I433-A(P563) |
| | |
| | |
| | |
| | |
| | |
| | |



SECT. "A-A"



SECT. "B-B"



SECT. "C-C"

LEGEND

I433-A(****)*
 * FORM
 BLANK=CHAIN
 L=LOOSE
 P=PREPLATE
 BLANK=POSTPLATE
 FINISH CODE

NOTES:

1. TERMINAL FOR USE WITH .093/(2.36) SERIES HOUSINGS AND WILL ACCEPT 24 THRU 30 AWG WIRE.
2. INSERTION FORCE: 3.5 LBS. MAX. WHEN TERMINAL IS INSERTED INTO AN .093 SERIES HOUSING.
3. CONTACT RETENTION: 20 LBS. MIN.
4. THIS PART CONFORMS TO PROD. SPEC. 02-09.

FINISH CODES:

- 901 HOT TIN DIP .000020/(0.00051) MIN.
- 903 HOT TIN-LEAD DIP .000050/(0.00127) MIN.
- 550 SELECT GOLD PLATE .000015/(0.00038) MIN. IN CONTACT AREA, OVER .000030/(0.00076) MIN. NICKEL OVERALL WITH .000010/(0.00025) MAX. GOLD FLASH OVERALL.
- 563 SELECT GOLD PLATE .000030/(0.00076) MIN. IN CONTACT AREA, SELECT TIN-LEAD PLATING .000100/(0.00254) MIN. IN CRIMP AREA OVER .000050/(0.00127) NICKEL OVERALL.

MATERIAL:

CARTRIDGE BRASS, ALLOY #C26000, .010/(0.25) THICK, SPRING TEMPER

| | | | | |
|----|--------------------------|----|---------|----|
| AA | REVISE PER ECR US 0799 | EC | 2/13/95 | RW |
| Z | FINAL RELEASE ECR U10454 | EC | 2/20/91 | RW |

| | | | |
|---|--------|---|--|
| DIMENSIONS SHOWN (METRIC) INCH UNLESS OTHERWISE SPECIFIED TOLERANCES INDICATED ± 1/2" | | TITLE | |
| ± PLATE ± .010 | --- | REVISE ONLY ON CAD SYSTEM | |
| ± PLATE ± .014 | ± 0.25 | CRIMP TERMINAL, FEMALE | |
| ± PLATE --- | ± 0.36 | .093/(2.36) DIA. FOR | |
| DRAWING DIMENSIONS MUST REMAIN WITHIN DIMENSIONS | | 24 THRU 30 AWG WIRE | |
| MOLEX INCORPORATED | | SHEET NO. 1 | |
| DATE 2/20/91 | | DATE 2/20/91 | |
| PART NO. SD-I433-* | | DRWG. NO. | |
| SEE CHART | | SCALE 6 : 1 | |
| FILE NAME S1033X1 | | THIS DRAWING CONTAINS INFORMATION THAT IS PROPRIETARY TO MOLEX INC. AND SHOULD NOT BE USED WITHOUT WRITTEN PERMISSION. CP | |