

Excellent Integrated System Limited

Stocking Distributor

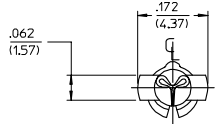
Click to view price, real time Inventory, Delivery & Lifecycle Information:

[Molex Connector Corporation](#)
[0002096132](#)

For any questions, you can email us directly:

sales@integrated-circuit.com

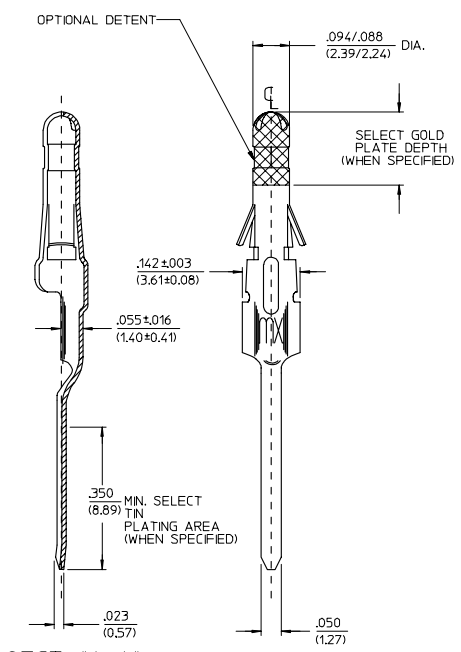
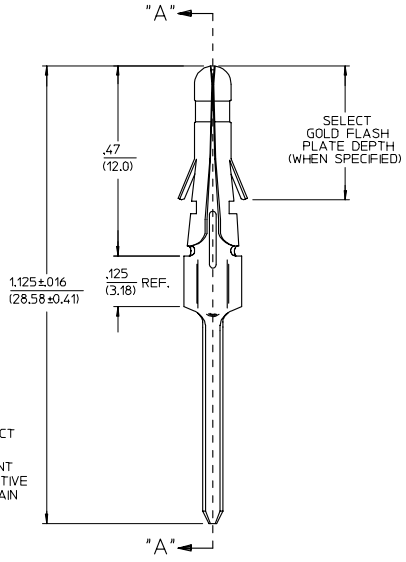
PART NO.	ENG. NO.
02-09-2133	1376-(P909)IL
02-09-2134	1376-A(P909)IL
02-09-6138	1376-(228)IL
02-09-6132	1376-(558)IL
02-09-6134	1376-A(558)IL
50-34-8509	1376-A(P154)IL



LEGEND

1376-*(*)***)*
 OPTIONAL DETENT
 BLANK-WITH DETENT
 A= WITHOUT DETENT
 FORM L=LOOSE
 P=PREPLATE
 BLANK=POSTPLATE
 FINISH CODE

- NOTES:**
- MATERIAL: BRASS
 - FINISHES:
 - * 909 HOT TIN DIP .000100/(0.00254) MIN.
 - * 154 OVERALL TIN .000100/(0.00254) MIN. OVER .000050/(0.00127) MIN. NICKEL OVERALL.
 - 558 SELECT GOLD PLATE .000030/(0.00076) MIN. IN CONTACT AREA OVER .000050/(0.00127) MIN. NICKEL OVERALL WITH .000010/(0.00025) MAX. GOLD FLASH.
 - * 228 SELECT GOLD PLATE .000030/(0.00075) MIN. IN CONTACT AREA. SELECT TIN PLATE .000100/(0.00250) MIN. IN TAIL AREA OVER .000050/(0.00125) NICKEL OVERALL WITH SELECT GOLD FLASH .000010/(0.00025) MAX IN AREA INDICATED.
 - * THE PRIMARY SHIPPING CARTON WILL BE LABELED, "COMPLIANT TO ROHS DIRECTIVE 2002/95/EC AND ELV ANNEX II OF DIRECTIVE 2000/53/EC". AND CARTONS WITHOUT THIS LABEL MAY CONTAIN PRODUCT WITH TIN-LEAD.
 - PRODUCT SPECIFICATION: PS-02-09
 - PACKAGING INFORMATION: NOT AVAILABLE.
 - TERMINALS FOR USE WITH 0.093/(2.36) SERIES HOUSINGS.
 - RECOMMENDED P.C. BOARD HOLE SIZE IS .062±.002/(1.57±0.05) DIA.
 - INSERTION FORCE: 3.5 LBS. MAX. WHEN TERMINAL IS INSERTED INTO AN .093 SERIES HOUSING.



SECT. "A-A"

ADD P/N 1376 -A(P154)IL EC NO: UCP2006-2524 DRWIN:ALHAG 2006/05/15 CHKD:LSCHMDT 2006/05/22 APPR:FSMITH 2006/07/14	QUALITY SYMBOLS	GENERAL TOLERANCES (UNLESS SPECIFIED)	SCALE 0.25" THICK. SPRING TEMPERATURE 6:1	DESIGN UNITS IN/CH	THIRD ANGLE PROJECTION	REVISE ON CAD ONLY
	4 PLACES ±.005 ±.005 3 PLACES ±.010 ±.010 2 PLACES ±.025 ±.014 1 PLACE ±.036 ±.014	DIMENSION STYLE IN/MM DRAWN BY DATE GC 1991/02/18	TITLE		P.C. TAIL TERMINAL, MALE, .093/(2.36) DIA.	
	ANGULAR ± ° DRAFT WHERE APPLICABLE MUST REMAIN WITHIN DIMENSIONS	CHECKED BY DATE RW 1991/02/18	APPROVED BY DATE GWF 1991/02/19		MATERIAL NO. SEE CHART MOLEX INCORPORATED	DOCUMENT NO. SD-1376-* SHEET NO. 1 OF 1
	M1	REV	THIS DRAWING CONTAINS INFORMATION THAT IS PROPRIETARY TO MOLEX INCORPORATED AND SHOULD NOT BE USED WITHOUT WRITTEN PERMISSION			