

## Excellent Integrated System Limited

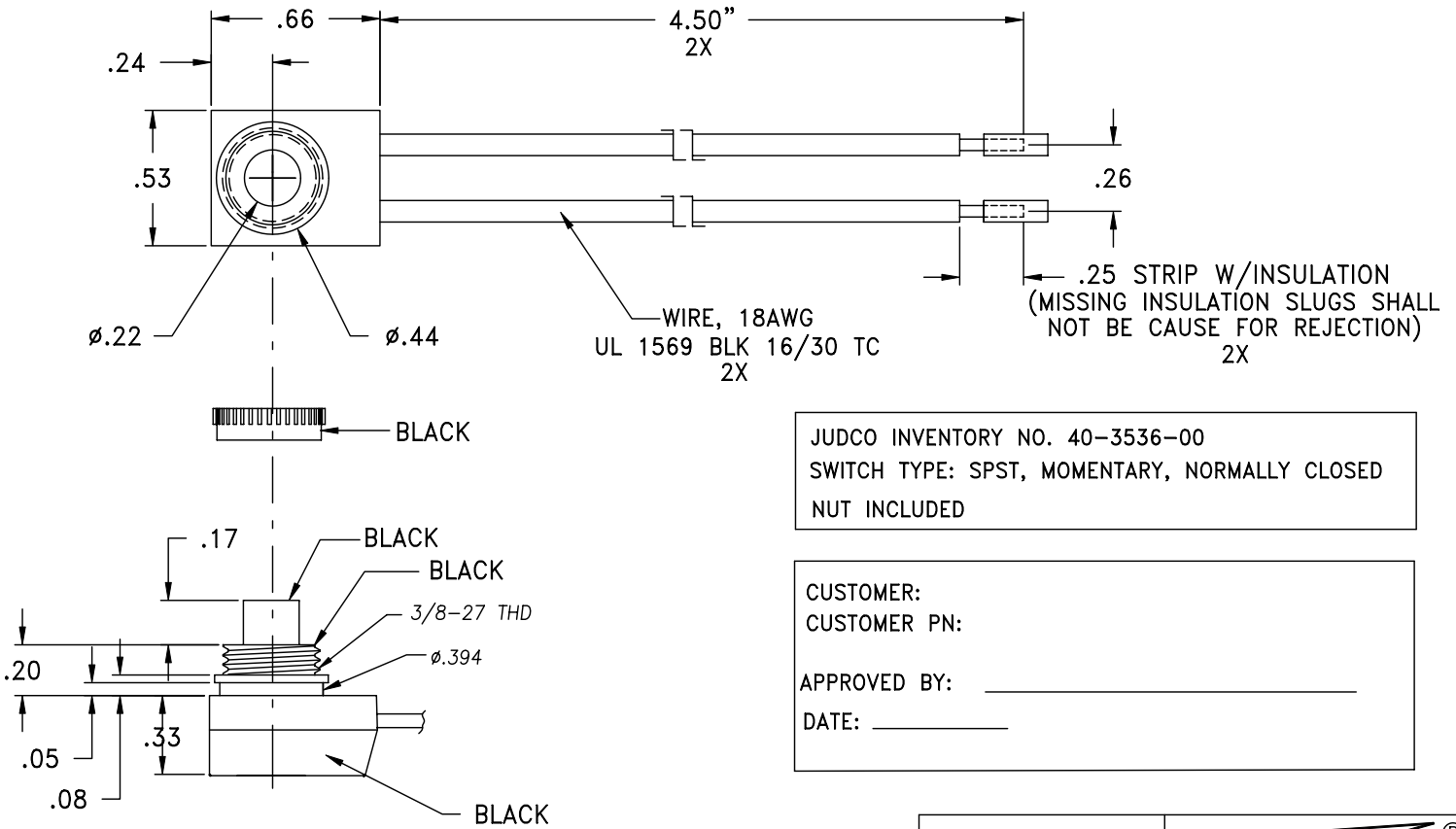
Stocking Distributor

Click to view price, real time Inventory, Delivery & Lifecycle Information:

[Judco Manufacturing, Inc.](#)  
[40-3536-00](#)


For any questions, you can email us directly:  
[sales@integrated-circuit.com](mailto:sales@integrated-circuit.com)

LTR	EN	DESCRIPTION	APPR	BY	DATE
A	-	INITIAL RELEASE	RB	NH	11-10-03
A1	-	UPDATED SIGNATURE BLOCK TO NEW FORMAT	MT	DC	12-11-08



JUDCO INVENTORY NO. 40-3536-00  
 SWITCH TYPE: SPST, MOMENTARY, NORMALLY CLOSED  
 NUT INCLUDED

CUSTOMER:  
 CUSTOMER PN:  
 APPROVED BY: \_\_\_\_\_  
 DATE: \_\_\_\_\_

DIMENSIONS IN INCHES DIMENSIONS ARE REFERENCE		 HARBOR CITY CALIFORNIA TITLE: OUTLINE J-188B-3 NON UL WIRES	
DRAWN: NH	11-10-03	DWG. NO.	1415-496
APPR: KJ	12-11-08	SHEET	1 OF 1
ENG'G: IS	12-11-08		
1415U496A1.DWG			

This document embodies a product, component, and/or design proprietary to JUDCO MANUFACTURING INC., and which is protected either as a trade secret, by U.S. Patent, or by copyright. It may not be used in any way without written express consent of JUDCO MANUFACTURING INC.