

Excellent Integrated System Limited

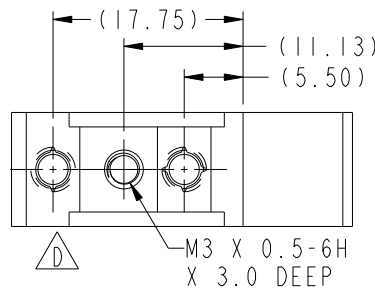
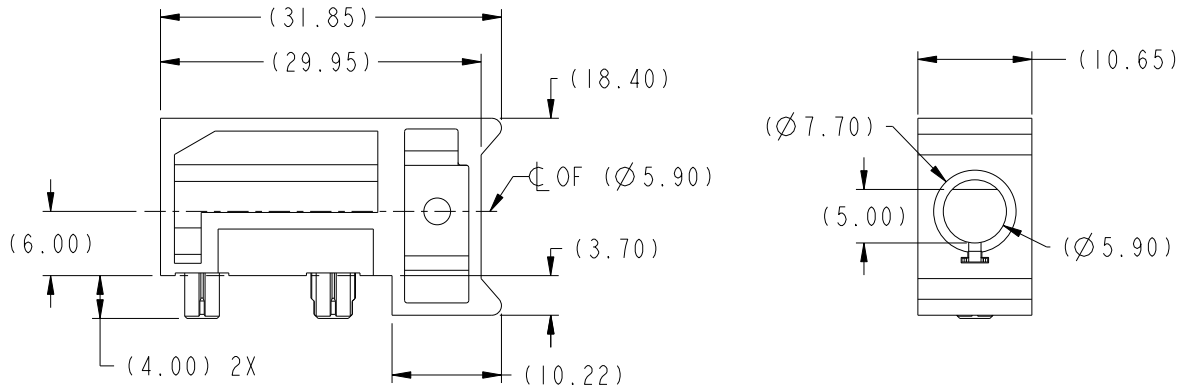
Stocking Distributor

Click to view price, real time Inventory, Delivery & Lifecycle Information:

[FCI](#)
[10084609-111LF](#)

For any questions, you can email us directly:
sales@integrated-circuit.com

PRODUCT NUMBER
10084609-111LF



Copyright FCI.

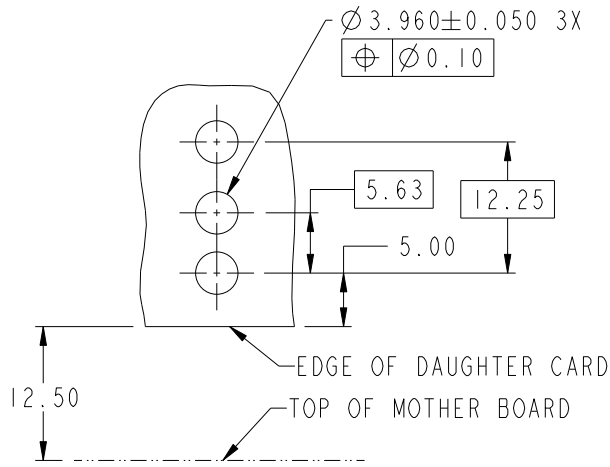
rev	ecn no	dr	date
A	S08-0174	CH	2008-06-02
B	S08-0181	CH	2008-06-13
C	S08-0336	CH	2008-10-13
D	S10-0118	YK	2010-06-02
-	-	-	-
-	-	-	-

www.fciconnect.com		surface 3.200 ASME Y14.5	tolerance std ASME Y14.5	projection ASME Y14.5	MM
Dr C. H. TAN 2008-06-02		TOLERANCES UNLESS OTHERWISE SPECIFIED		size A4	Scale 1:1
Eng Y. K. LIM 2010-06-02	Chr C. H. TAN 2010-06-02	ANGULAR	LINEAR	0.X ±.3	ECN S10-0118
Appr JOEY NG 2010-06-02		0° ±2°	0.XX ±.10	0.XXX ±.050	Spec ref
FCI		10.8mm GUIDE MODULE HOUSING		dag no 10084609	Rev. D
WITH KEYING OPTIONS		catalog no		CUSTOMER	sheet 1 of 3

REV E - 2004-03-26



Copyright FCI.



SCALE 2:1

RECOMMENDED PCB LAYOUT NOTES 4 & 5

	title	10.8mm GUIDE MODULE HOUSING	desig no	10084609	Rev.	D
	WITH KEYING OPTIONS					
	catalog no	-	CUSTOMER	sheet 2 of 3		

REV E - 2004-03-26

A

B

C

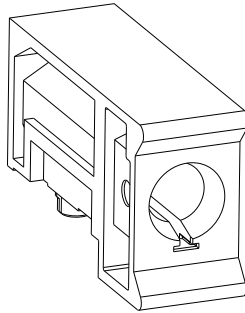
D


A

B

C

D



- ① MATERIAL: ZINC ALLOY
- ② FINISH: TRIVALENT CHROMATE IRIDESCENT
- ③ APPLICATION SPEC: GS-20-045
- ④ THRU HOLE PLATING AND ANNULAR RINGS MUST BE ADDED AS APPROPRIATE FOR APPLICATIONS WITH THE ESD GROUNDING OPTION. FINISHED HOLE SIZE IS THE SAME REGARDLESS OF PLATED BARREL OR NOT
- ⑤ REFER TO CUSTOMER DRAWING 10035911 FOR INFORMATION REGARDING PCB LAYOUT OF POWER AND GUIDE MODULES RELATIVE TO SIGNAL MODULES
- ⑥ THIS PRODUCT MEETS EUROPEAN UNION DIRECTIVES AND OTHER COUNTRY REGULATIONS AS DESCRIBED IN GS-22-008.
- ⑦ PACKAGING MEETS GS-14-920 LEAD FREE LABELING SPECIFICATION.
- ⑧ A  SYMBOL WILL BE NEXT TO ANY DIMENSION, VIEW OR NOTE WHICH HAS BEEN MODIFIED WITH THE CURRENT DRAWING REVISION



Copyright FCI.

	10.8mm GUIDE MODULE HOUSING	10084609	Rev. D
	WITH KEYING OPTIONS		
catalog no	-	CUSTOMER	sheet 3 of 3

REV E - 2004-03-26

1

2

PDM: Rev:D

STATUS: **Released**

⁴Printed: Dec 01, 2010