

## Excellent Integrated System Limited

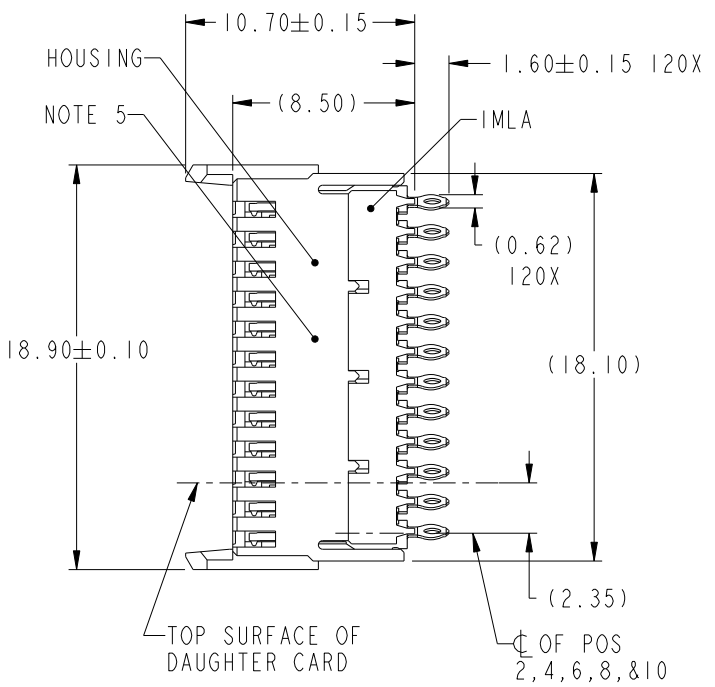
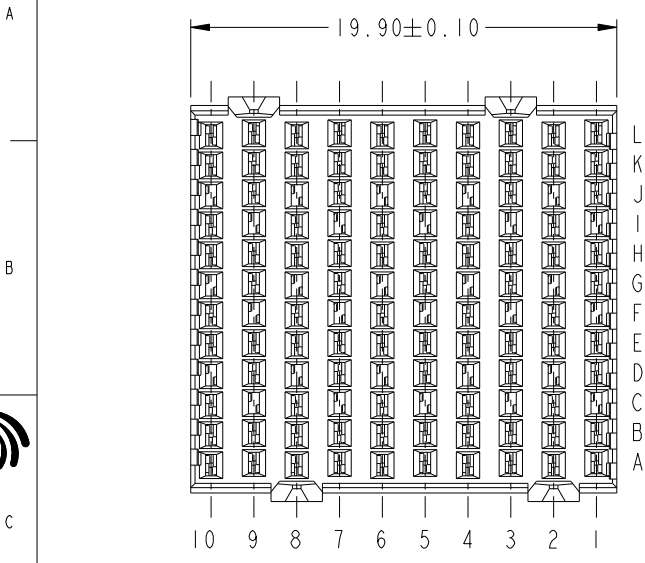
Stocking Distributor

Click to view price, real time Inventory, Delivery & Lifecycle Information:

[FCI](#)  
[10084601-101LF](#)

For any questions, you can email us directly:  
[sales@integrated-circuit.com](mailto:sales@integrated-circuit.com)

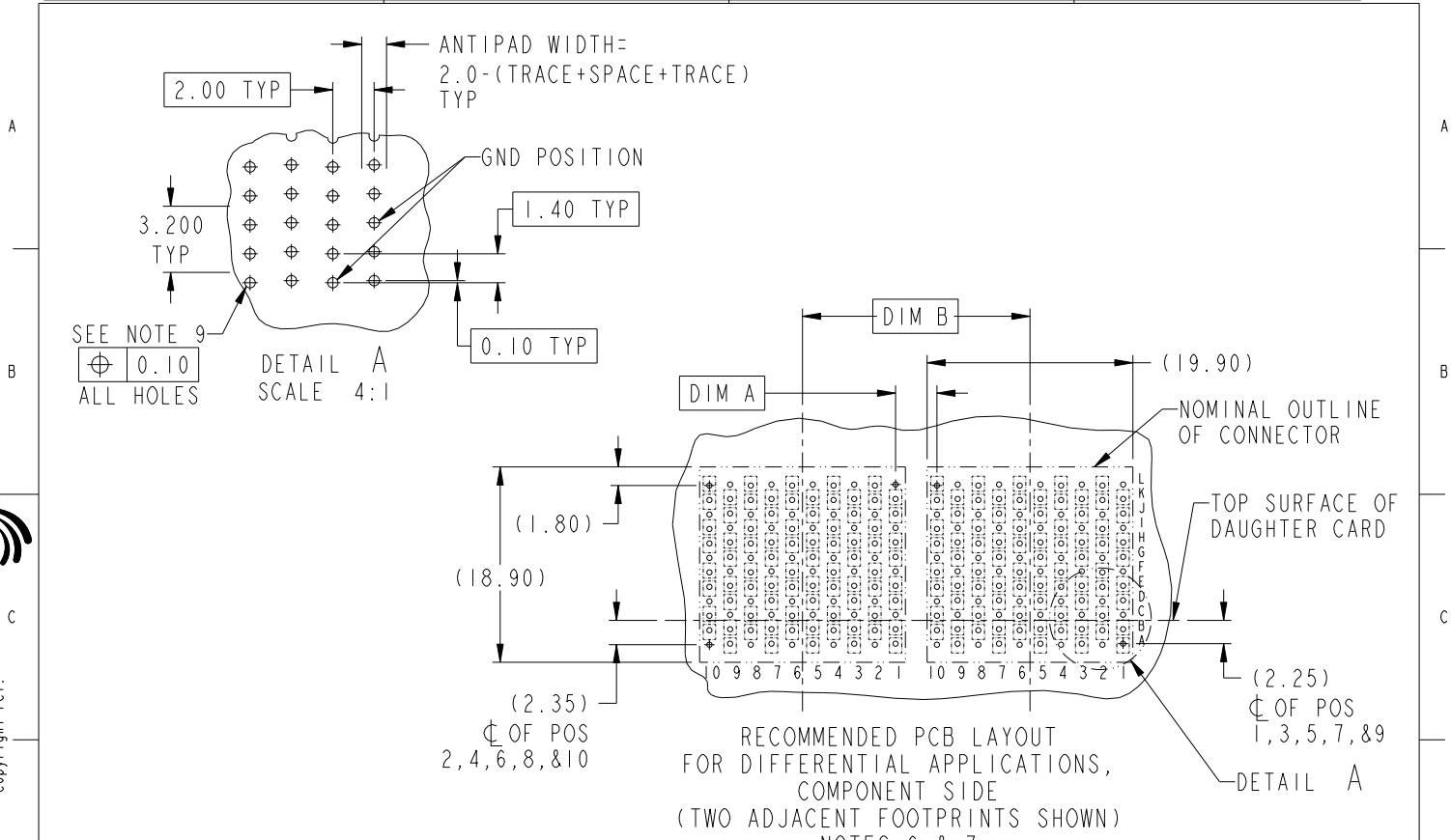
PRODUCT NUMBER  
SEE TABLE, SHEET 4



Copyright FCI.

www.fciconnect.com				surface - ASME Y14.5	tolerance - ASME Y14.5	std	projection	MM
				TOLERANCES UNLESS OTHERWISE SPECIFIED				
Dr	L. S. NGWE	2008-06-03	2008-06-03	ANGULAR	LINEAR	0.X	±	size A4
Eng	C. H. TAN	2008-06-13	2008-06-13	0°	±	0.XX	±	Scale 4:1
Chr	C. H. TAN	2008-06-13	2008-06-13	0°	±	0.XXX	±	ECN ***
Appr	JOEY NG	2008-06-13	2008-06-13	Product family	AirMax VS	Spec ref		
				title AirMax VS VERT RECPT ASSY PRESS-FIT, 120 POSITION, 20mm		dag no 10084601	Rev. B	
				catalog no	CUSTOMER	sheet 1 of 4		

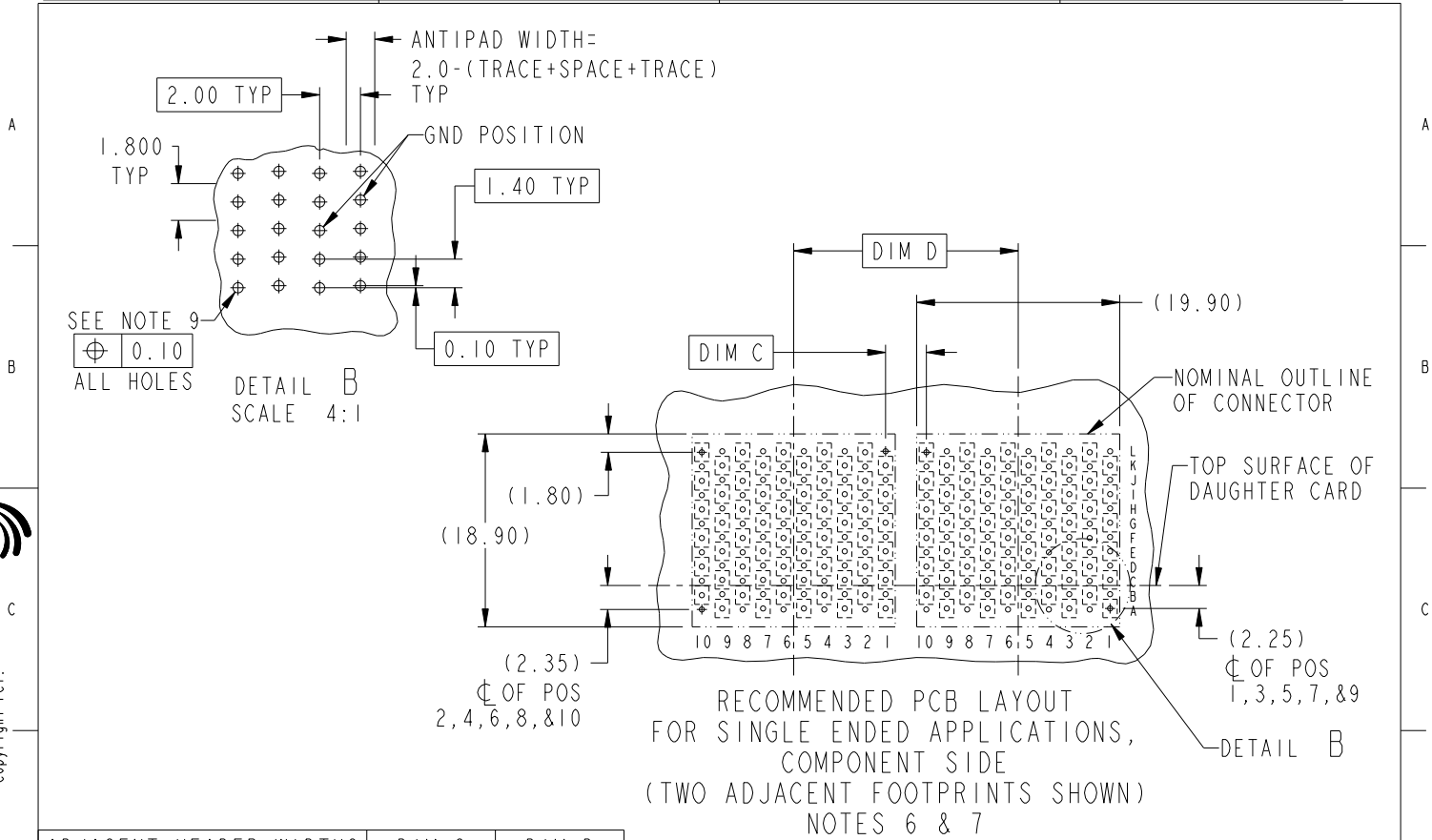
REV F - 2008-06-13



Copyright FCI.

ADJACENT HEADER WIDTHS	DIM A	DIM B
20MM/20MM	2.00	20.00
20MM/22MM	3.00	21.00
22MM/22MM	4.00	22.00

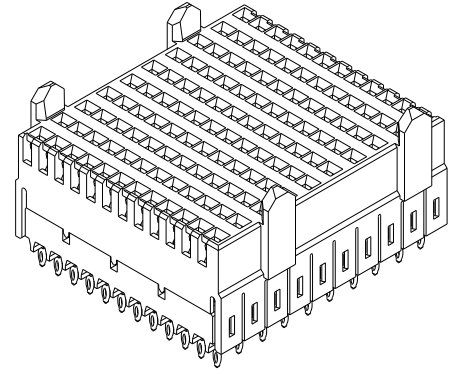
	title	AirMax VS VERT RECPT ASSY	des no	10084601	Rev.	B
	catalog no	PRESS-FIT, 120 POSITION, 20mm	CUSTOMER	sheet 2 of 4		



ADJACENT HEADER WIDTHS	DIM C	DIM D
20MM/20MM	2.00	20.00
20MM/22MM	3.00	21.00
22MM/22MM	4.00	22.00

<b>FCI</b>	title	AirMax VS VERT RECPT ASSY	desig no	10084601	Rev.	B
	catalog no	PRESS-FIT, 120 POSITION, 20mm, (SSI)	CUSTOMER	sheet 3 of 4		

PART NUMBER	PRESS-FIT TAIL PLATING TYPE
10084601-101LF	TIN OVER NICKEL (LEAD FREE)



NOTES:

1. CONNECTOR MATERIALS:  
 HOUSING: HIGH TEMP THERMOPLASTIC, NATURAL, UL94V-0  
 IMLA PLASTIC: HIGH TEMP THERMOPLASTIC, BLACK, UL94V-0  
 CONTACT: COPPER ALLOY
2. CONTACT PLATING:  
 SEPARABLE INTERFACE:  
 PERFORMANCE-BASED PLATING, QUALIFIED TO MEET THE REQUIREMENTS  
 OF FCI PRODUCT SPECIFICATION GS-12-239, INCLUDING TELCORDIA  
 GR-1217-CORE (NOVEMBER 1995) CENTRAL OFFICE.  
 PRESS-FIT TAILS: SEE TABLE
3. PRODUCT SPECIFICATION: GS-12-239
4. APPLICATION SPECIFICATION: GS-20-035
5. PRODUCT MARKING, (PART NUMBER & LOT CODE),  
 ON THIS SURFACE
6. REFER TO CUSTOMER DRAWING 10035911 FOR INFORMATION  
 REGARDING PCB LAYOUT OF POWER AND GUIDE MODULES  
 RELATIVE TO SIGNAL MODULES
7. POSITION F OF ODD NUMBERED COLUMNS AND POSITION G  
 OF EVEN NUMBERED COLUMNS CORRESPOND TO EARLY MATE  
 HEADER PINS
8. THERE IS NO GROUND BUSSING WITHIN THE CONNECTOR SYSTEM
9. SEE CUSTOMER DRAWING 10045979 FOR INFORMATION ON PCB HOLE  
 DIAMTER AND PLATING OPTIONS
10. THIS PRODUCT MEETS EUROPEAN UNION DIRECTIVES AND OTHER  
 COUNTRY REGULATIONS AS DESCRIBED IN GS-22-008
11. THE HOUSING WILL WITHSTAND EXPOSURE  
 TO 260°C PEAK TEMPERATURE FOR  
 40 SECONDS IN A CONVECTION, INFRA-RED  
 OR VAPOR PHASE REFLOW OVEN
12. PACKAGING MEETS GS-14-920 LEAD FREE  
 LABELING SPECIFICATION



Copyright FCI.

<b>FCI</b>	title	AirMax VS VERT RCPT ASSY	desig no	10084601	Rev.	B
	catalog no	PRESS-FIT, 120 POSITION, 20mm	-	CUSTOMER	sheet	4 of 4

REV F - 2006-06-17