

Excellent Integrated System Limited

Stocking Distributor

Click to view price, real time Inventory, Delivery & Lifecycle Information:

[Samtec, Inc.](#)
[ASP-134602-01](#)

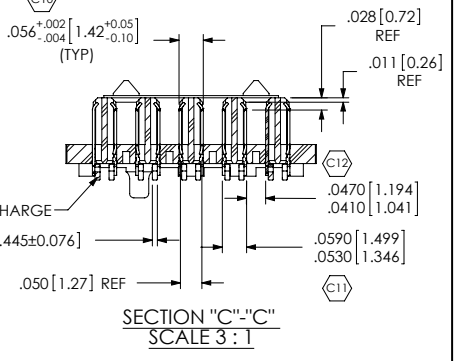
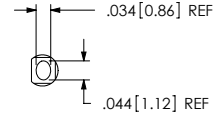
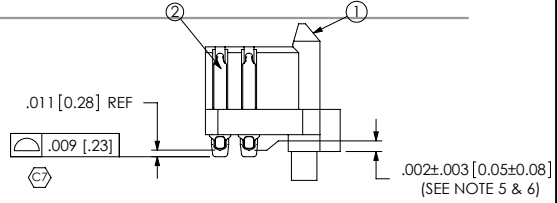
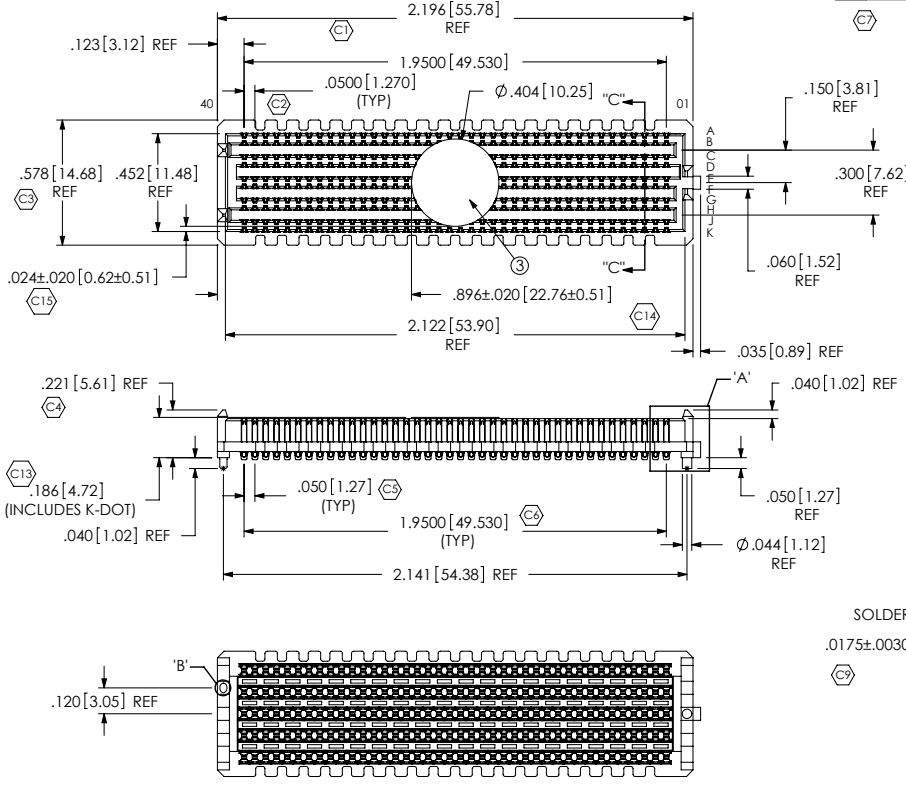
For any questions, you can email us directly:
sales@integrated-circuit.com

REVISION HISTORY	
REV	DESCRIPTION
1	INITIAL RELEASE
2	02/02/02 ADD REFERENCE SYMBOLS
3	02/02/02 ADD REFERENCE SYMBOLS
4	02/02/02 ADD REFERENCE SYMBOLS
5	02/02/02 ADD REFERENCE SYMBOLS
6	02/02/02 ADD REFERENCE SYMBOLS
7	02/02/02 ADD REFERENCE SYMBOLS
8	02/02/02 ADD REFERENCE SYMBOLS
9	02/02/02 ADD REFERENCE SYMBOLS
10	02/02/02 ADD REFERENCE SYMBOLS
11	02/02/02 ADD REFERENCE SYMBOLS
12	02/02/02 ADD REFERENCE SYMBOLS
13	02/02/02 ADD REFERENCE SYMBOLS
14	02/02/02 ADD REFERENCE SYMBOLS
15	02/02/02 ADD REFERENCE SYMBOLS
16	02/02/02 ADD REFERENCE SYMBOLS
17	02/02/02 ADD REFERENCE SYMBOLS
18	02/02/02 ADD REFERENCE SYMBOLS
19	02/02/02 ADD REFERENCE SYMBOLS
20	02/02/02 ADD REFERENCE SYMBOLS

BY SIGNING THIS DOCUMENT YOU ARE ACCEPTING THE CONDITIONS SET WITHIN. YOUR REQUIREMENTS MUST BE LISTED IN THE COMMENTS WHERE NO DIMENSION FROM THE CUSTOMER IS IDENTIFIED SAMTEC'S PROCESS REQUIREMENTS WILL BE USED.

DATE: _____
 COMPANY: _____
 CUSTOMER SIGNATURE: _____
 PRINTED NAME: _____
 PHONE NO: _____
 EXCEPTIONS: _____

- NOTES:
- VITA 57 CONNECTOR.
 - ⊙ REPRESENTS A CRITICAL DIMENSION.
 - MINIMUM PUSHOUT FORCE: .75 LBS.
 - ATTACH LABEL "SEAX-0001" TO EACH TAPE & REEL PACKAGE.
 - MAXIMUM ROW TO ROW VARIATION .003[0.08].
 - DIMENSION C8 MUST BE MEASURED IN THE FOUR OUTSIDE CORNERS USING INSPECTION FIXTURE AT-1817-836-1, USE CO-AU-WI-2003-M FOR PROCESS.
 - PARTS TO BE PACKAGED IN TAPE & REEL.



ITEM NO.	PART NUMBER	QUANTITY	MATERIAL
1	SEAM-40-02.0-10-A	1.0000	LCP UL 94 V0, COLOR: BLACK
2	NEW-SUB-T-1M36-02.0-S-2	400.00	COPPER ALLOY / LEAD FREE SOLDER
3	K-DOT-.404-.500-.005	1.0000	POLYIMIDE FILM
4	CT-SEAM032MS	1.0000	CONDUCTIVE POLYMER

NON STANDARD	
COMPONENT	
ASSEMBLY	
TOOLING	
PROCESS	
PACKAGING	
OTHER	X

UNLESS OTHERWISE SPECIFIED, DIMENSIONS ARE IN INCHES. TOLERANCES ARE:
 DECIMALS ANGLES
 .XX: ±.01[.3] 2°
 .XXX: ±.005[.13]
 .XXXX: ±.0020[.051]

DO NOT SCALE DRAWING SHEET SCALE: 1:5.1

PLATING:
 CONTACT AREA: .000030 GOLD OVER .000050 NICKEL
 REMAINDER: .000200 REF TIN OVER .000050 NICKEL

F:\DWG\MISC\MKTG\ASP-134602-01-MKT.SLDRW

PROPRIETARY NOTE
 THIS DOCUMENT CONTAINS INFORMATION CONFIDENTIAL AND PROPRIETARY TO SAMTEC, INC. AND SHALL NOT BE REPRODUCED OR TRANSFERRED TO OTHER DOCUMENTS OR DISCLOSED TO OTHERS OR USED FOR ANY PURPOSE OTHER THAN THAT WHICH IT WAS OBTAINED WITHOUT THE EXPRESSED WRITTEN CONSENT OF SAMTEC, INC.

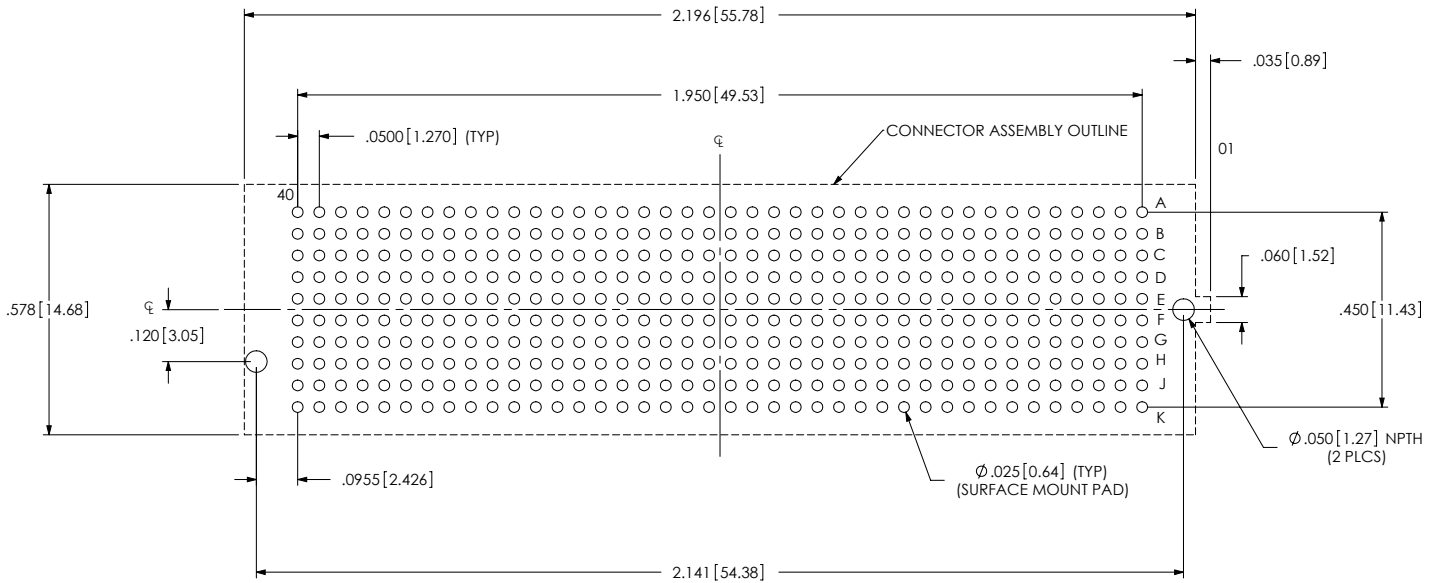
520 PARK EAST BLVD, NEW ALBANY, IN 47150
 PHONE: 812-944-6733 FAX: 812-948-5047
 e-Mail: info@SAMTEC.com code: 55322

DESCRIPTION:
 .050 PITCH TERMINAL ARRAY ASM.

DWG. NO. ASP-134602-01

BY: G. PURVIS 10/31/2007 SHEET 1 OF 4

REVISION H



ALL DIMENSIONS ARE SYMMETRIC ABOUT CENTERLINE

H

CRITICAL DIMENSION INSPECTION INSTRUCTION TABLE	
ASSEMBLY OPERATION	IN-PROCESS INSPECTION
FILL SUB-T-1M36-02.0-S-2	C3, C4, C5, C6, C7, C8, C9, C10, C11, C12
ADD K DOT	C13, C14, C15

F:\DWG\MISC\MKTG\ASP-134602-01-MKT.SLDDRW

PROPRIETARY NOTE
 THIS DOCUMENT CONTAINS INFORMATION CONFIDENTIAL AND PROPRIETARY TO SAMTEC, INC. AND SHALL NOT BE REPRODUCED OR TRANSFERRED TO OTHER DOCUMENTS OR DISCLOSED TO OTHERS OR USED FOR ANY PURPOSE OTHER THAN THAT WHICH IT WAS OBTAINED WITHOUT THE EXPRESSED WRITTEN CONSENT OF SAMTEC, INC.

DO NOT SCALE DRAWING

SHEET SCALE: 3:1

samtec
 520 PARK EAST BLVD, NEW ALBANY, IN 47150
 PHONE: 812-944-6733 FAX: 812-948-5047
 e-Mail: info@SAMTEC.com code: 55322

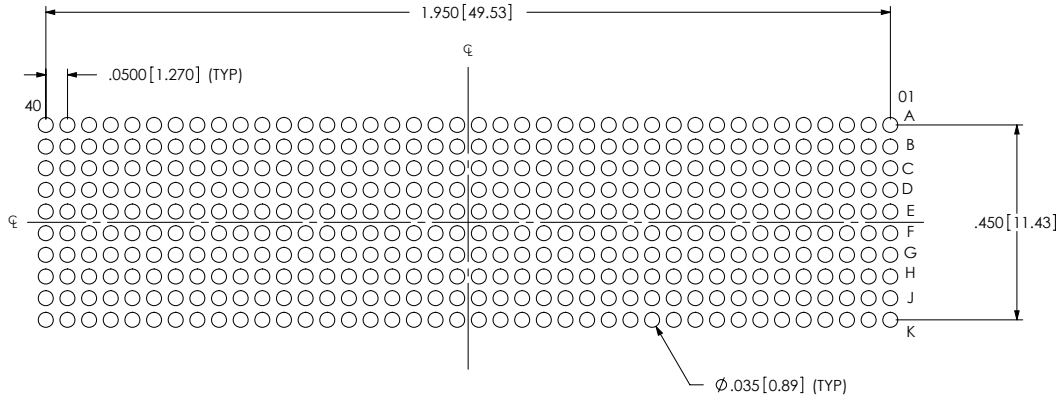
DESCRIPTION: .050 PITCH TERMINAL ARRAY ASM.

DWG. NO. ASP-134602-01


BY: G. PURVIS 10/31/2007 SHEET 2 OF 4

REVISION H

NOTES:
 STENCIL THICKNESS TO BE .0060[0.152].

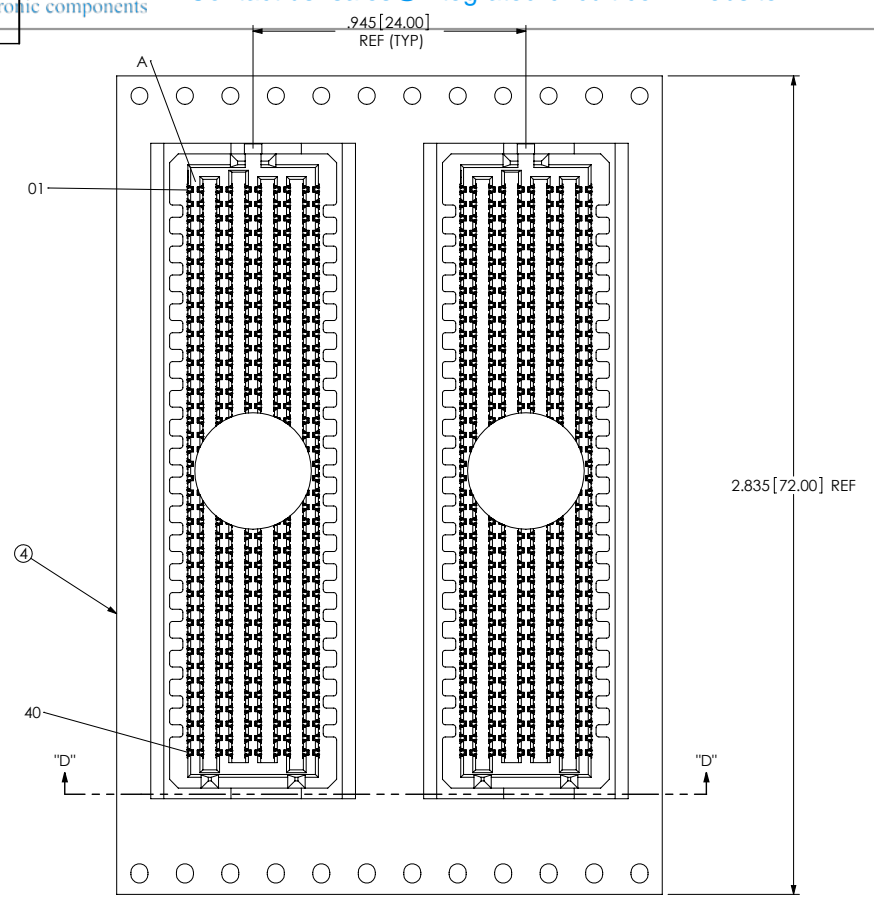


ALL DIMENSIONS ARE SYMMETRIC ABOUT CENTERLINE.

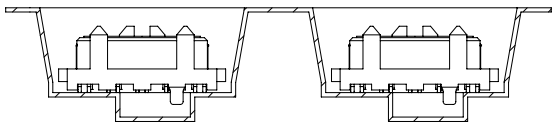
<p>PROPRIETARY NOTE THIS DOCUMENT CONTAINS INFORMATION CONFIDENTIAL AND PROPRIETARY TO SAMTEC, INC. AND SHALL NOT BE REPRODUCED OR TRANSFERRED TO OTHER DOCUMENTS OR DISCLOSED TO OTHERS OR USED FOR ANY PURPOSE OTHER THAN THAT WHICH IT WAS OBTAINED WITHOUT THE EXPRESSED WRITTEN CONSENT OF SAMTEC, INC.</p> <p>DO NOT SCALE DRAWING</p> <p>SHEET SCALE: 3:1</p>	 520 PARK EAST BLVD, NEW ALBANY, IN 47150 PHONE: 812-944-6733 FAX: 812-948-5047 e-Mail: info@SAMTEC.com code: 55322	
	DESCRIPTION: .050 PITCH TERMINAL ARRAY ASM.	
	DWG. NO. ASP-134602-01	
	BY: G. PURVIS 10/31/2007	SHEET 3 OF 4

F:\DWG\MISC\MKTG\ASP-134602-01-MKT.SLDDRW

REVISION H



USER DIRECTION OF UN-REELING →
POCKET NOT DETAILED




SECTION "D"-"D"
PACKAGING VIEW

F:\DWG\MISC\MKTG\ASP-134602-01-MKT.SLDDRW

PROPRIETARY NOTE
 THIS DOCUMENT CONTAINS INFORMATION CONFIDENTIAL AND PROPRIETARY TO SAMTEC, INC. AND SHALL NOT BE REPRODUCED OR TRANSFERRED TO OTHER DOCUMENTS OR DISCLOSED TO OTHERS OR USED FOR ANY PURPOSE OTHER THAN THAT WHICH IT WAS OBTAINED WITHOUT THE EXPRESSED WRITTEN CONSENT OF SAMTEC, INC.

DO NOT SCALE DRAWING

SHEET SCALE: 2:1

 520 PARK EAST BLVD, NEW ALBANY, IN 47150 PHONE: 812-944-6733 FAX: 812-948-5047 e-Mail: info@SAMTEC.com code: 55322	
DESCRIPTION:	.050 PITCH TERMINAL ARRAY ASM.
DWG. NO.	ASP-134602-01
BY:	G. PURVIS 10/31/2007 SHEET 4 OF 4