

## Excellent Integrated System Limited

Stocking Distributor

Click to view price, real time Inventory, Delivery & Lifecycle Information:

[Conec](#)  
[160X10269X-S5](#)

For any questions, you can email us directly:  
[sales@integrated-circuit.com](mailto:sales@integrated-circuit.com)

4

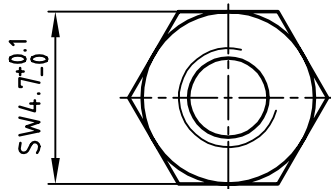
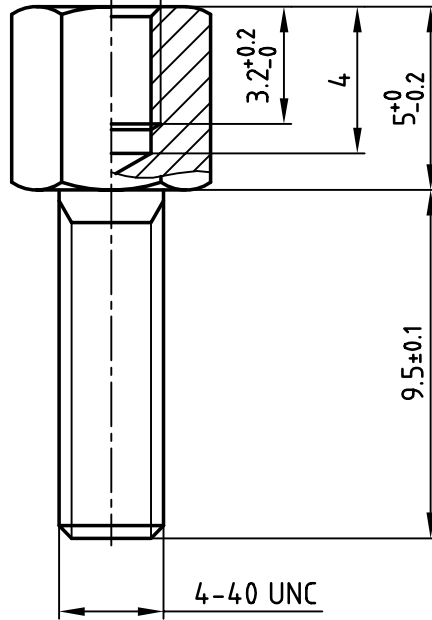
3

2

1

used for:

4-40 UNC



Part-No.

160X10269X-S5

160X00699A

**Notes:**

1. Part is splint and burr free
2. Threaded core dimension 4-40 UNC: 2.257±0.1
3. Test equipment measurement: 4-40 UNC-2B (thread inner)  
4-40 UNC-2A (thread outer)

THIS DRAWING MAY NOT BE COPIED OR REPRODUCED IN ANY WAY, AND MAY NOT BE PASSED ON TO A THIRD PARTY WITHOUT WRITTEN PERMISSION.  
OWNERSHIP AND COPYRIGHT OF CONEC GmbH  
DO NOT ALTER CAD DRAWING BY HAND

tolerance			scale:		5:1
ISO 2768-m			material:		STAINLESS STEEL
2002	date	name		title: <b>HEX BOLT</b> 4-40 UNC / 4-40 UNC 14.5 mm long	
drawn	03.07.	Schmidt			
appd.	03.07.	Mickenbecker			
norm					
d-old				dwg no: CAD/ 2000 DIN-A 4 sh: 1/1	
rev.	description	date	name		
				product no: <b>740FELOA</b> SEE TABLE	



740FELOA

SEE TABLE

A

A

C

C

D

D

E

E

F

F

B

B