

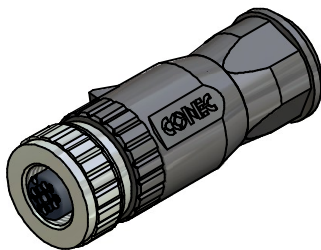
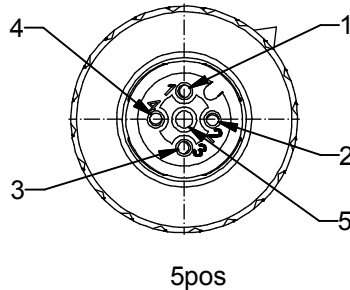
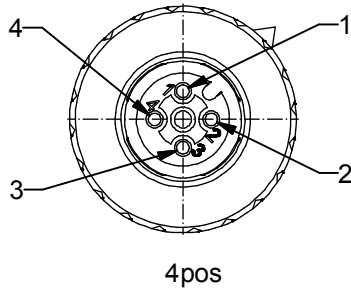
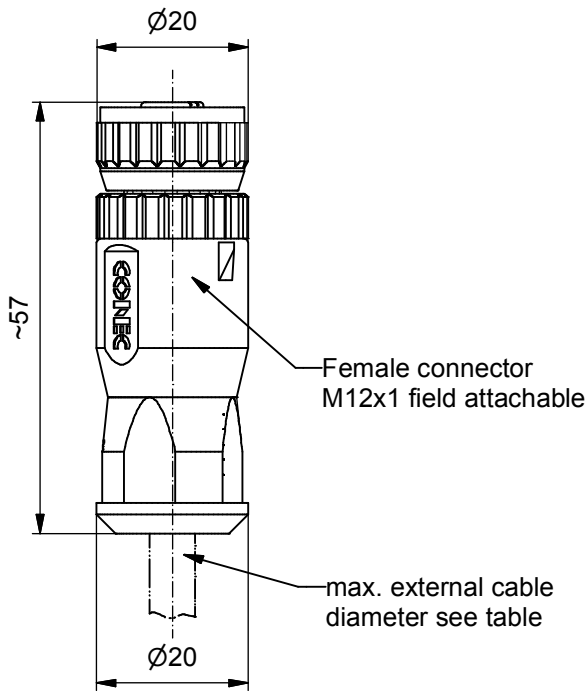
Excellent Integrated System Limited

Stocking Distributor

Click to view price, real time Inventory, Delivery & Lifecycle Information:

[Conec](#)
[43-00091](#)

For any questions, you can email us directly:
sales@integrated-circuit.com



Technical specification:

Rated voltage:	4pos	5pos
IEC 61076-2-101	250 V	60 V
Current rating:	4A at 40°C	
IEC 61076-2-101		
Insulation resistance:	>=10 GΩ	
IEC 60512-2		
Pollution degree:	3/2	
IEC 60664-1		
Degree of protection:	IP 67, in mated condition	
IEC 60529		
Temperature range:	-30°C ... +85°C	
IEC 60664-1		
Mating cycles:	<=100	
IEC 60512-9a		
Wire cross section:	AWG18 / max. 0,75mm²	

Materials:

Contact:	CuZn
Contact plating:	Nickel, gold plated
Contact carrier:	PA6, UL 94
Screw:	Steel, nickel plated
Cable sealing:	Elastomere
O-Ring:	FPM
Coupling nut:	Die cast, nickel plated
Housing:	PA6 GF, UL 94

Directive 2002/95/EC
„RoHS“
Compliant

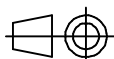
	Part no:	Description:	Pos:	Cable-Ø:
Screw connection	43-00091	SAL - 12 - RKC4 - S6/075	4	4 - 6mm
	43-00092	SAL - 12 - RKC4 - S8/075	4	6 - 8mm
	43-00093	SAL - 12 - RKC5 - S6/075	5	4 - 6mm
	43-00094	SAL - 12 - RKC5 - S8/075	5	6 - 8mm

DO NOT ALTER CAD DRAWING BY HAND

Status: 19.01.09 db

tolerance: ISO 2768-m

THIS DRAWING MAY NOT BE COPIED OR REPRODUCED IN ANY WAY, AND MAY NOT BE PASSED ON TO A THIRD PARTY WITHOUT WRITTEN PERMISSION.



dim. in mm

	date	name
drawn	19.01.09	Burschik
appd.	19.01.09	Schmidt



title: Female connector M12x1, field attachable, axial, screw connection

dwg no: Inventor 10

43K1A834