

Excellent Integrated System Limited

Stocking Distributor

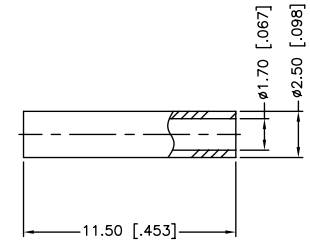
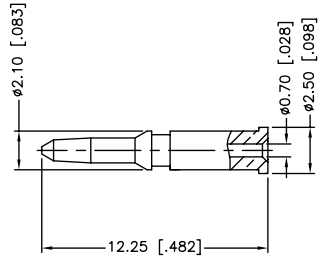
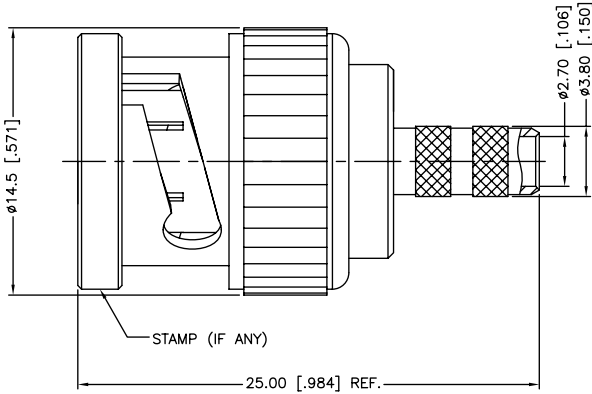
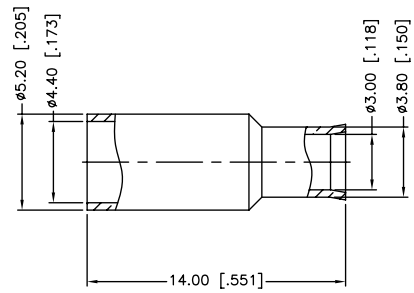
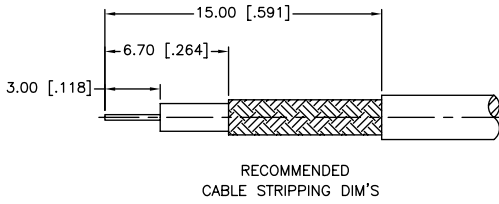
Click to view price, real time Inventory, Delivery & Lifecycle Information:

[Amphenol RF](#)
[112134](#)

For any questions, you can email us directly:

sales@integrated-circuit.com

REV.	DATE	ECR NO.	DESCRIPTION
A	02/28/02	XXXXXX	MODIFY CONTACT PIN AND BODY LENGTH
B	04/04/03	XXXXXX	UPDATE DRAWING FORMAT
C	08/05/11	2210	CHANGE THE MATERIAL OF SHELL TO ZINC DIECAST



1. CRIMPED FERRULE
HEX CRIMP SIZE .178"
2. CRIMPED CONTACT PIN
HEX CRIMP SIZE .068"

QTY	DESCRIPTION	MATERIAL	FINISH
6	FERRULE	BRASS	NICKEL
5	SLEEVE	DELTRIN	NATURAL
4	CONTACT PIN	BRASS	GOLD
3	INSULATOR	DELTRIN	NATURAL
2	BODY	BRASS	NICKEL
1	SHELL	ZINC DIECAST	NICKEL

UNLESS OTHERWISE SPECIFIED DIMENSIONS ARE IN MILLIMETERS. DIMENSIONS IN [] ARE IN INCHES AND FOR CUSTOMER REFERENCE ONLY.

UNLESS OTHERWISE SPECIFIED TOLERANCES FOR MILLIMETERS ARE:
 0.5 - 8mm ± 0.20mm
 8 - 30mm ± 0.40mm
 30 - 120mm ± 0.50mm

UNLESS OTHERWISE SPECIFIED TOLERANCES FOR INCHES ARE:
 .020 - .315 = ± 0.007"
 .315 - 1.180 = ± 0.015"
 1.180 - 4.724 = ± 0.020"

DO NOT SCALE DRAWING

APPROVALS	DATE
DRAWN M.ZHANG	11/21/06
CHECKED	
ISSUED	
SHEET 1 OF 1	
CAD FILE C:/CONNEX/112134.DWG	

Amphenol Connex

PART DESCRIPTION
**BNC CRIMP PLUG – 50 Ohms
 (FOR RG-174/U 188/U, 316/U CABLE)**

PART NO. **112134**

DWG. NO. 112134.DWG REV. C SIZE A SCALE NA