

## Excellent Integrated System Limited

Stocking Distributor

Click to view price, real time Inventory, Delivery & Lifecycle Information:

[Storm Interface](#)  
[RC120203](#)

For any questions, you can email us directly:

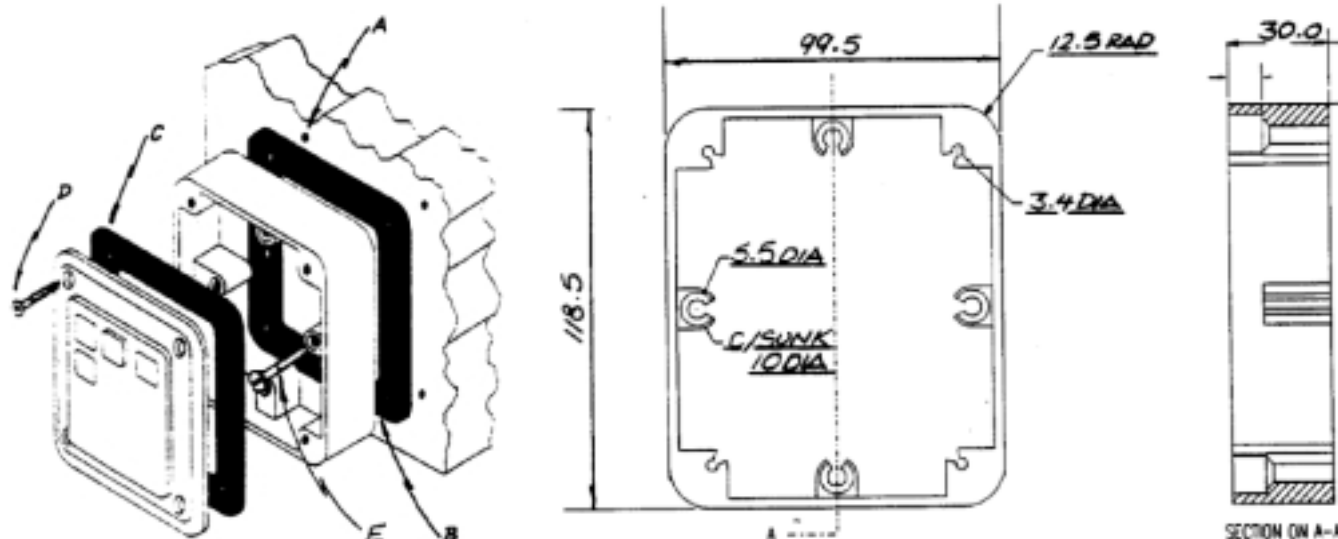
[sales@integrated-circuit.com](mailto:sales@integrated-circuit.com)



## REAR CASE FOR 1000 SERIES KEYPAD

A tough weather resistant housing for mounting the Storm 1000 and 2000 Series 12 way keypads to a wall or surface. The rear casing provides space behind the keypad for the location of cables, encoding electronics or other components. Alternatively the Rear Case can be set into a wall or surface to enable flush mounting of the Storm 12 way keypad.

### OVERALL DIMENSIONS



### FIXING INSTRUCTIONS

(Please read carefully before installation)

1. Select a suitable location with a sound, flat surface. Using the case as a template, mark the position of the four fixing holes (A) on the surface.
2. Drill and plug the fixing holes to suit fixing screws (E) as supplied (No. 10 x 50mm Counter-sunk).
3. Locate the thicker 6mm thick sealing gasket (B) on the rear face of the case before positioning the case over the fixing holes (A).

4. Secure the case to the surface using suitable fixing screws.

#### Keypad to casing

5. Locate the thinner sealing gasket (C) supplied with the keypad) on the rear face of the Storm keypad before positioning the keypad over the case.
6. Fix the keypad to the case using the thread forming security screws (D) as supplied. Please note a special bit is supplied for tightening these screws.
7. Check the installation to ensure gaskets are in place and compressed evenly around the perimeter of the case.

### Notes :-

On rough or uneven surfaces it may be necessary to apply a bead of silicone sealant around the inner face of the case at the point where it meets the mounting surface.

Where this method of sealing is necessary the thicker sealing gasket (B) should not be fitted.

All screws and fixing should be suitably plated or protected against corrosion.

### ENVIRONMENTAL

**Water/Dust Resistance** IP67/NEMA4 when mounted to a flat, non-porous surface

**Impact Resistance** 20 Joules via 50mm dia. Steel impactor (when keypad fitted and casing mounted to surface)

**Operational Temperature** -40° to +100°C (dry)

### MATERIALS

**Case Structure** Extruded Aluminium  
**Finish** Black Epoxy Powder coat  
**Security Screws** A2 Stainless steel Torx No. 8 self-tap  
**Sealing Gaskets** EPDM

### ORDERING DETAILS

**Rear Case** RC12020[x]



Whilst every effort is made to ensure details are correct at time of print, specifications are subject to change without notice.



usa office:  
**storm data entry technology**  
suite 202  
364 pennsylvania avenue  
glen ellyn IL 60137 USA  
tel: (630) 469 2981  
fax: (630) 469 2975  
email: sales.usa@storm-keypads.com  
website: www.storm-keypads.com

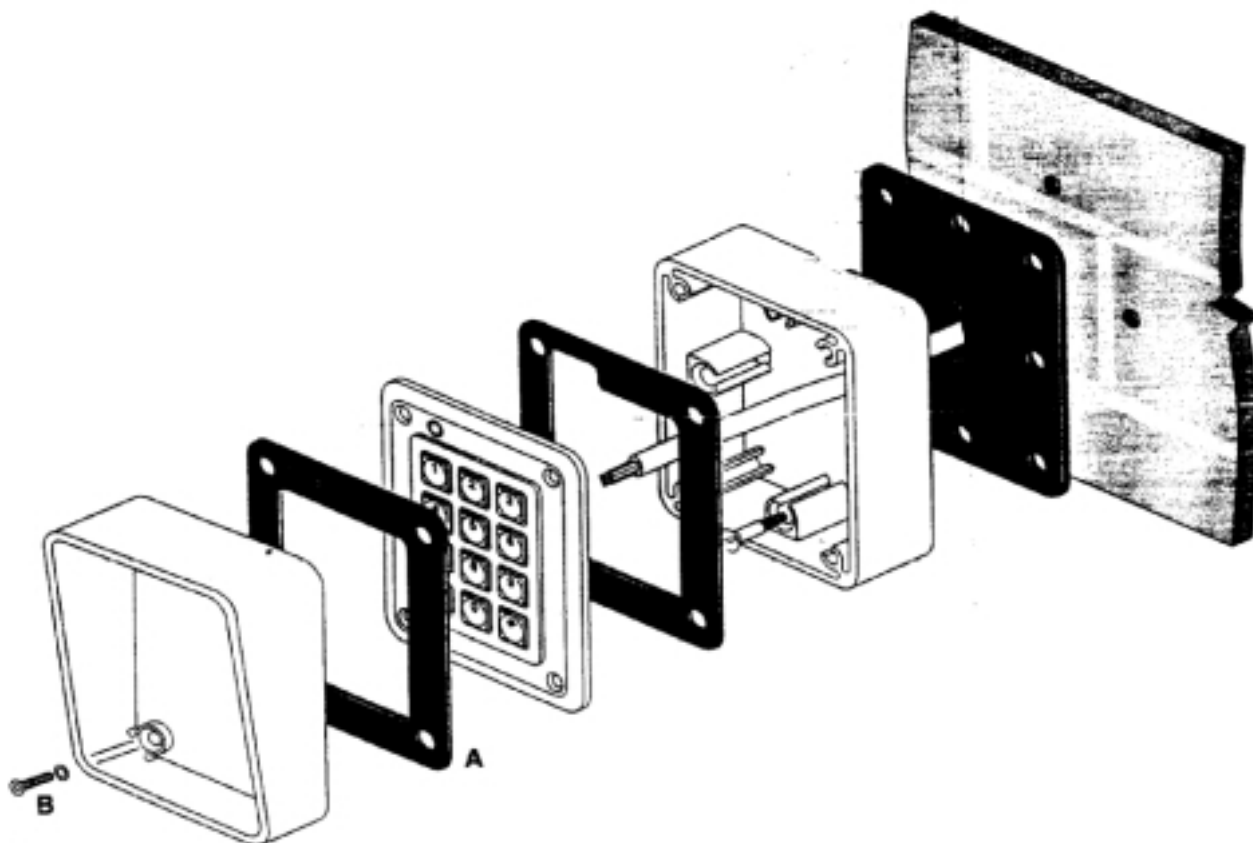
uk office:  
**keymat technology ltd**  
14 bentinck court  
bentinck road  
west drayton  
middlesex UB7 7RQ

tel: +44 (0)1895 431421  
fax: +44 (0)1895 431132  
email: sales@keymat.com  
website: www.keymat.com



## PRIVACY SHROUD FOR STORM K RANGE AND AXS KEYPADS

Front mounted Privacy Shroud for use with Storm K Range and AXS keypads. The Privacy Shroud provides added security for financial transactions, access control or other applications where the PIN or Entry Code should be protected against observation or surveillance. To achieve higher level PIN Code security when using Storm AXS Strikemaster keypads the "hidden entry code" feature can also be utilised. The Privacy Shroud locates onto the four keypad fixing positions making installation quick and easy..



### FIXING INSTRUCTIONS

(Please read carefully before installation)

1. Secure the self adhesive sealing gasket (A) to the front surface of the Storm keypad. Please take care to ensure that the knock-out for the LED is removed, where appropriate.

2. Locate the Privacy Shroud to the front surface of the keypad and secure using the four security fixings (B).

**Important :** ensure that the nylon sealing washer is located beneath the head of the security screw (B). A security bit is supplied for tightening these screws.

### Important Note :-

#### For retrospective installations.

Please ensure that the security fixings (currently locating the keypad into position) are removed before applying the sealing gasket)

#### For new installations

Where the Privacy Shroud is to be used in conjunction with the wall mounted keypad and rear case, follow the installation instructions supplied with the keypad or rear case, however, do not fit the security screws until the Privacy Shroud is in position.

### MATERIALS

Case Structure  
Finish  
Security Screws

Extruded Aluminium  
Black Epoxy Powder coat  
A2 Stainless steel Torx No. 8 self-tap  
Self-Adhesive EPDM

Sealing Gaskets

### ORDERING DETAILS

Privacy Shroud

1KFS020[X]



Whilst every effort is made to ensure details are correct at time of print, specifications are subject to change without notice.



usa office:  
**storm data entry technology**  
suite 202  
364 pennsylvania avenue  
glen ellyn IL 60137 USA  
tel: (630) 469 2981  
fax: (630) 469 2975  
email: sales.usa@storm-keypads.com  
website: www.storm-keypads.com

uk office:  
**keymat technology ltd**  
14 bentinck court  
bentinck road  
west drayton  
middlesex UB7 7RQ

tel: +44 (0)1895 431421  
fax: +44 (0)1895 431132  
email: sales@keymat.com  
website: www.keymat.com