

Excellent Integrated System Limited

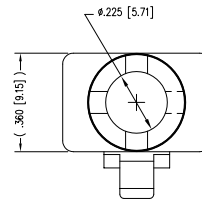
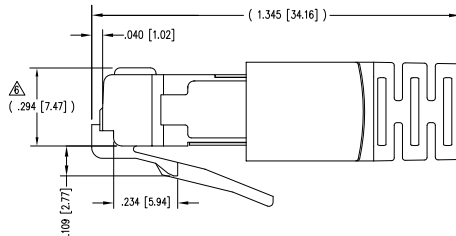
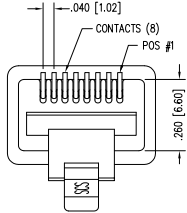
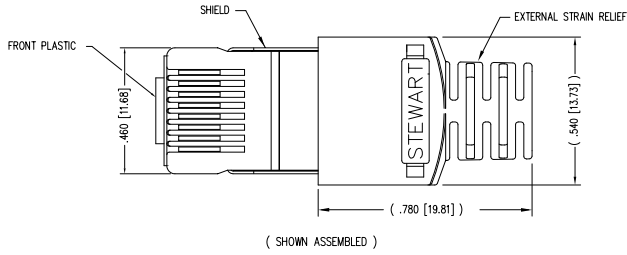
Stocking Distributor

Click to view price, real time Inventory, Delivery & Lifecycle Information:

[Bel Fuse Inc.](#)
[940-SP-360808-031-A221](#)

For any questions, you can email us directly:
sales@integrated-circuit.com

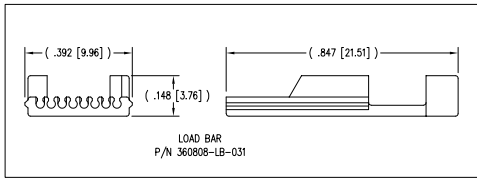
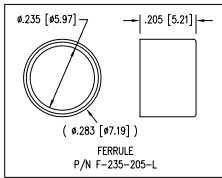
DATE	REV	ECN	APP'D. BY
6-25-09	A5	8770	JM
8-25-10	B0	9060	TRM
2-4-11	B1	9125	TRM
5-23-12	B2	9476	SMN
1-7-15	B3	10173	TRM



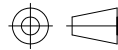
NOTES:

- 1- PLUG KIT CONSISTS OF :
 PRE-INSERTED PLUG HOUSING & SHIELD
 LOAD BAR
 FERRULE
 - 2- MATERIALS :
 FRONT HOUSING PLASTIC : CLEAR POLYCARBONATE, UL 94-V0
 LOAD BAR : CLEAR POLYCARBONATE, UL 94-V0
 SHIELD : TIN PLATED BRASS
 CONTACTS : PHOSPHOR BRONZE, SELECTIVE GOLD PLATING
 FERRULE : NICKEL OR TIN PLATED BRASS
 - 3- CONTACTS TERMINATE STRANDED CONDUCTORS UP TO .031 [0.79] OUTSIDE DIAMETER OF INSULATION.
 - 4- FOR PLUG SPECIFICATION SEE PRO26-01.
 - 5- DIMENSIONS & TOLERANCES COMPLY WITH TIA-1096 STANDARD.
- △ TERMINATED PLUG HEIGHT: .237 [6.02] ±.005 [0.13] ON CABLE

BULK	50 MICRO-INCHES [1.27um]	940-SP-360808-031-A221
PACKAGE	CONTACT PLATING IN MATING AREA	PART NUMBER



THIRD ANGLE PROJECTION



DO NOT SCALE DRAWING
 DRAWING IS SUBJECT TO CHANGE WITHOUT NOTICE

DIMENSIONS: INCHES (METRIC)

UNLESS OTHERWISE SPECIFIED TOLERANCES ARE ±.005 [0.13] ANGLES ARE ± 1°

SHEET NO. 1 OF 1



1118 Susquehanna Trail South
 Gen Rock, PA 17327-9199
 (717) 235-7512
<http://www.stewartconnector.com>

TITLE: 8 X 8 SHIELDED PLUG

THIS DRAWING AND THE SUBJECT MATTER SHOWN THEREON ARE CONFIDENTIAL AND THE PROPERTY OF STEWART CONNECTOR AND SHALL NOT BE REPRODUCED, COPIED, OR USED IN ANY MANNER WITHOUT PRIOR WRITTEN CONSENT OF STEWART CONNECTOR. THIS PRODUCT MAY BE PROTECTED BY ONE OR MORE OF THE FOLLOWING US PATENTS: 5628647 6402259 6409265 6524128 7753171 8013063 OTHER PATENTS MAY BE PENDING.

DRN BY: KRL	DATE: 1/30/06
APP'D BY: JM	DATE: 1-31-06
DWG NO. CT360146	REV. B3

