

Excellent Integrated System Limited

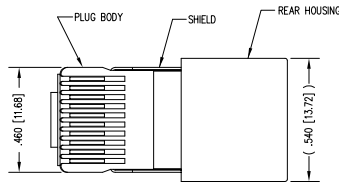
Stocking Distributor

Click to view price, real time Inventory, Delivery & Lifecycle Information:

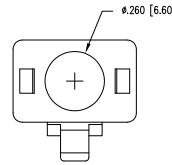
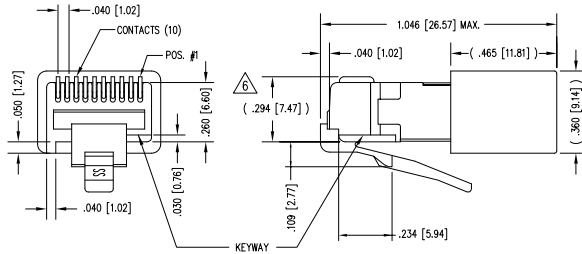
[Bel Fuse Inc.](#)
[940-SP-361010-RMK4-A152](#)

For any questions, you can email us directly:
sales@integrated-circuit.com

DATE	REV	ECN	APP'D. BY
4-12-04	A1	6351	JMB
1-19-06	A2	7441	JM
2-10-11	A3	9125	SMN
5-23-12	A4	9476	SMN
1-7-15	A5	10173	TRM

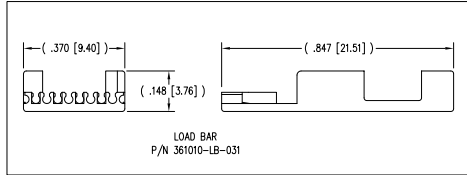
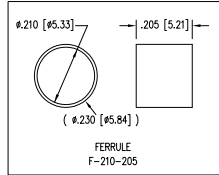


(SHOWN ASSEMBLED)

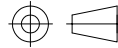


- NOTES:
- 1- PLUG KIT CONSISTS OF :
 PRE-INSERTED PLUG HOUSING & SHIELD
 LOAD BAR
 FERRULE
 HOUSING
 - 2- MATERIALS :
 FRONT HOUSING PLASTIC : CLEAR POLYCARBONATE, UL 94-V0
 LOAD BAR : CLEAR POLYCARBONATE, UL 94-V0
 SHIELD : TIN PLATED BRASS
 CONTACTS : PHOSPHOR BRONZE, SELECTIVE GOLD PLATING
 FERRULE : NICKEL OR TIN PLATED BRASS
 HOUSING PLASTIC : BLACK POLYCARBONATE, UL 94-V0
 - 3- CONTACTS TERMINATE STRANDED CONDUCTORS UP TO .031 [0.79] OUTSIDE DIAMETER OF INSULATION.
 - 4- FOR PLUG SPECIFICATION SEE PRO26-01.
 - 5- DIMENSIONS & TOLERANCES COMPLY WITH TIA-1096 STANDARD
- △ TERMINATED PLUG HEIGHT: .237 [6.02] ±.005 [0.13] ON CABLE

BULK	50 MICRO-INCHES [1.27um]	940-SP-361010-RMK4-A152
PACKAGE	CONTACT PLATING IN MATING AREA	PART NUMBER



THIRD ANGLE PROJECTION



DO NOT SCALE DRAWING
 DRAWING IS SUBJECT TO CHANGE WITHOUT NOTICE

DIMENSIONS: INCHES (METRIC)

UNLESS OTHERWISE SPECIFIED TOLERANCES ARE: ±.005 [0.13] ANGLES ARE ± 1°

SHEET NO. 1 OF 1



1118 Susquehanna Trail South
 Gen Rock, PA 17327-9199
 (717) 235-7512
<http://www.stewartconnector.com>

TITLE: 10 X 10 SHIELDED PLUG WITH HOUSING WITH RMK4 KEY

DRW BY: DAB DATE 4/2/04
 APP'D BY: RCC DATE 4/2/04

DWG NO. CT360169 REV. A5



2

1

AutoCAD

REV. 1-19-11