

Excellent Integrated System Limited

Stocking Distributor

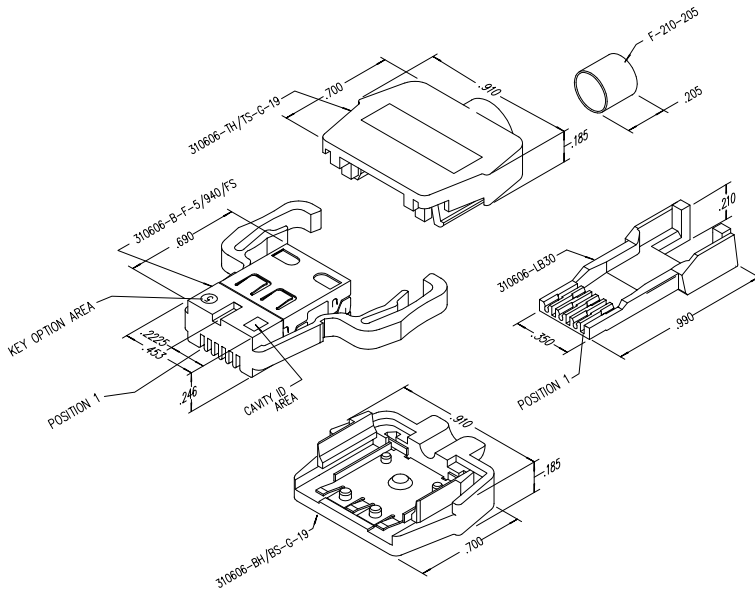
Click to view price, real time Inventory, Delivery & Lifecycle Information:

[Bel Fuse Inc.](#)
[SS-310606-5-0010](#)

For any questions, you can email us directly:

sales@integrated-circuit.com

DATE	REV	ECN	APP'D. BY
1/31/06	B1	7461	JM
2-23-06	B2	7515	JM
1-19-11	B3	9124	SMN
1-5-15	B4	10169	TRM

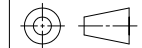


NOTES:

1. PLUG MATERIALS:
TOP/BOTTOM HOUSING: PC UL94 V-0 COLOR: GREY
FRONT PLASTIC: PC UL94 V-0 COLOR: CLEAR
LOAD BAR: PC UL94 V-0 COLOR: BLUE
CONTACTS/SHIELD: COPPER ALLOY
SHIELD PLATING: TIN
FERRULE PLATING: NICKEL OR TIN
CONTACT PLATING: SELECTIVE GOLD IN CONTACT AREA
SEE CHART FOR PART NUMBER
2. CONTACTS TERMINATE SOLID OR STRANDED CONDUCTORS
UP TO .026" OUTSIDE DIAMETER OF INSULATION
3. DIMENSIONS AND TOLERANCES COMPLY WITH TIA-1096 STANDARD.
4. HOUSING WILL ACCEPT CABLE UP TO .220" OUTSIDE DIAMETER OF JACKET
5. FOR PRODUCT SPECIFICATIONS SEE PRO26-01
6. TERMINATED PLUG HEIGHT .234±.002 ON CABLE

50 MICRO-INCHES [1.27um]	SS-310606-5-0010
CONTACT PLATING IN MATING AREA	PART NUMBER

THIRD ANGLE PROJECTION



DO NOT SCALE DRAWING
DRAWING IS SUBJECT TO
CHANGE WITHOUT NOTICE

DIMENSIONS: INCHES [METRIC]
UNLESS OTHERWISE SPECIFIED
TOLERANCES ARE: .005 [0.13]
ANGLES ARE: ± 1°

SHEET NO. 1 OF 1



11118 Susquehanna Trail South
Glen Rock, PA 17327-9199
(717) 235-7512
<http://www.stewartconnector.com>

TITLE: 6X6 COMPU-SHIELD PLUG FINAL ASSEMBLY

THIS DRAWING AND THE SUBJECT MATTER SHOWN THEREON ARE
CONFIDENTIAL AND THE PROPRIETARY PROPERTY OF STEWART CONNECTOR
AND SHALL NOT BE REPRODUCED, COPIED, OR USED IN ANY MANNER WITHOUT
PRIOR WRITTEN CONSENT OF STEWART CONNECTOR. THIS PRODUCT
MAY BE PROTECTED BY ONE OR MORE OF THE FOLLOWING US PATENTS:
562847 6402559 6406535 6524128
7753177 8613063
OTHER PATENTS MAY BE PENDING.

DRN BY: KRL	DATE 1/31/06
APP'D BY: JM	DATE 2-1-06
DWG NO. CT310026	REV. B4

AutoCAD