

Excellent Integrated System Limited

Stocking Distributor

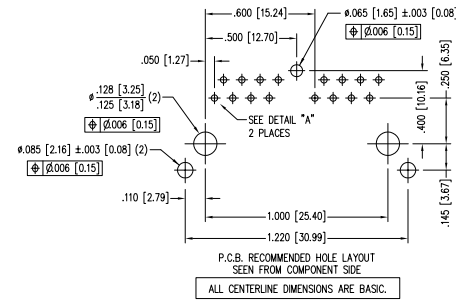
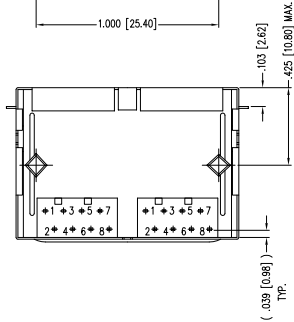
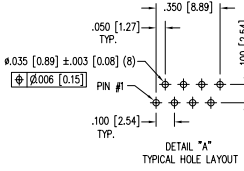
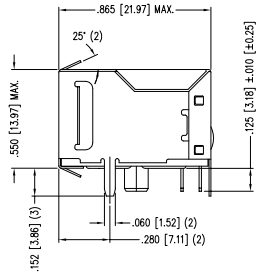
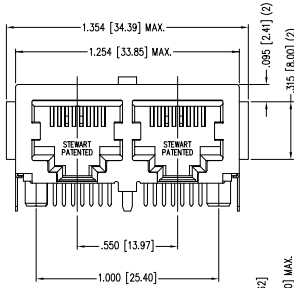
Click to view price, real time Inventory, Delivery & Lifecycle Information:

[Bel Fuse Inc.](#)
[SS-718802S-A-FLS-AC](#)

For any questions, you can email us directly:

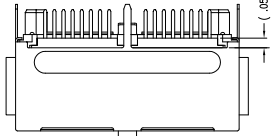
sales@integrated-circuit.com

DATE	REV	ECN	APP'D. BY
3-21-06	A5	7549	TRM
4-3-07	A6	7990	TRM
6-19-12	A7	9511	SMN
1-16-15	A8	10208	TRM



- NOTES:
- CONNECTOR MATERIALS:
 HOUSING: THERMOPLASTIC UL94 V-0
 CONTACT/SHIELD: TIN-PLATED COPPER ALLOY
 SHIELD PLATING: NICKEL OR TIN
 CONTACT PLATING: SELECTIVE GOLD IN CONTACT AREA
 SEE CHART FOR PART NUMBER
 - FOR PRODUCT SPECIFICATION SEE PRO22-01.
 - DESIGNED FOR CATEGORY 5/5e APPLICATIONS.
 - DIMENSIONS AND TOLERANCES COMPLY WITH FCC/CFR 47, PART 68.

30 MICRO-INCHES [0.76um]	SS-718802S-A-FLS-AC
CONTACT PLATING IN MATING AREA	PART NUMBER



THIRD ANGLE PROJECTION

DO NOT SCALE DRAWING
 DRAWING IS SUBJECT TO CHANGE WITHOUT NOTICE

DIMENSIONS: INCHES [METRIC]

UNLESS OTHERWISE SPECIFIED TOLERANCES ARE: ±.005 [0.13] ANGLES ARE ± 1°

SHEET NO. 1 OF 1

stewart connector
a bel group

1118 Susquehanna Trail South
 Gen Rock, PA 17327-9199
 (717) 235-7512
<http://www.stewartconnector.com>

TITLE: 2 PORT HARMONICA JACK PAC, EMI-RFI ENHANCED SHIELD ESD GROUNDED, FLANGED, PANEL GROUNDS

DRW BY: SHE DATE 10-27-05
 APP'D BY: DANNY DATE 10-27-05
 DWG NO. CT710030 REV. A8

