

## Excellent Integrated System Limited

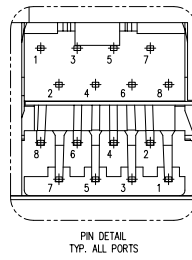
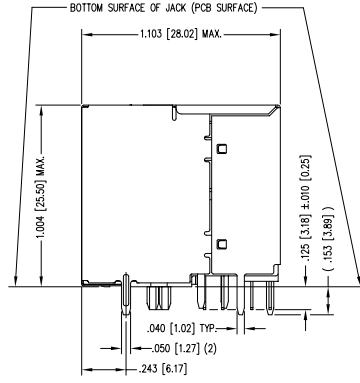
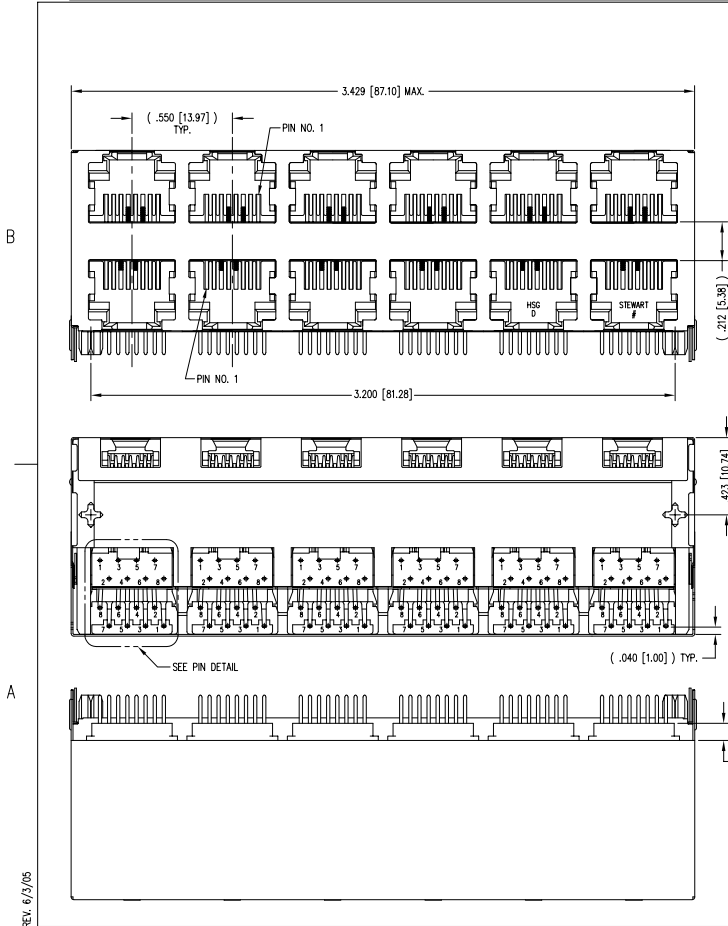
Stocking Distributor

Click to view price, real time Inventory, Delivery & Lifecycle Information:

[Bel Fuse Inc.](#)  
[SS-73100-003](#)

For any questions, you can email us directly:  
[sales@integrated-circuit.com](mailto:sales@integrated-circuit.com)

DATE	REV	ECN	APP'D. BY
6-27-06	B2	7581	TRM
10-24-07	C0	8268	TRM
6-19-12	C1	9514	SMN
1-19-15	C2	10212	TRM



- NOTES:
- CONNECTOR MATERIALS:  
 HOUSING: THERMOPLASTIC UL94 V-0  
 CONTACTS/SHIELD: COPPER ALLOY  
 CONTACT PLATING: SELECTIVE GOLD IN CONTACT AREA  
 SEE CHART FOR PART NUMBER  
 SHIELD PLATING: NICKEL OR TIN
  - FOR PRODUCT SPECIFICATION SEE PRO22-01.
  - DIMENSIONS AND TOLERANCES COMPLY WITH FCC/CFR 47, PART 68.
  - DESIGNED FOR CATEGORY 5/5e APPLICATIONS.

50 MICRO-INCHES [1.27um]	SS-73100-003
CONTACT PLATING IN MATING AREA	PART NUMBER

THIRD ANGLE PROJECTION

DO NOT SCALE DRAWING  
 DRAWING IS SUBJECT TO  
 CHANGE WITHOUT NOTICE

TITLE: EIGHT CONTACT, EIGHT POSITION SHIELDED STACK JACK  
 ENHANCED SHIELD, 12 PORT (6 ON 6)

DIMENSIONS: INCHES (METRIC)

UNLESS OTHERWISE SPECIFIED  
 TOLERANCES ARE ±.005 [0.13]  
 ANGLES ARE ± 1°

SHEET NO. 1 OF 2



1118 Susquehanna Trail South  
 Gen Rock, PA 17327-9199  
 (717) 235-7512  
<http://www.stewartconnector.com>

DRW BY: TRM DATE: 6-27-05  
 APP'D BY: DHG DATE: 6-27-05  
 DWG NO. CT730057 REV. C2

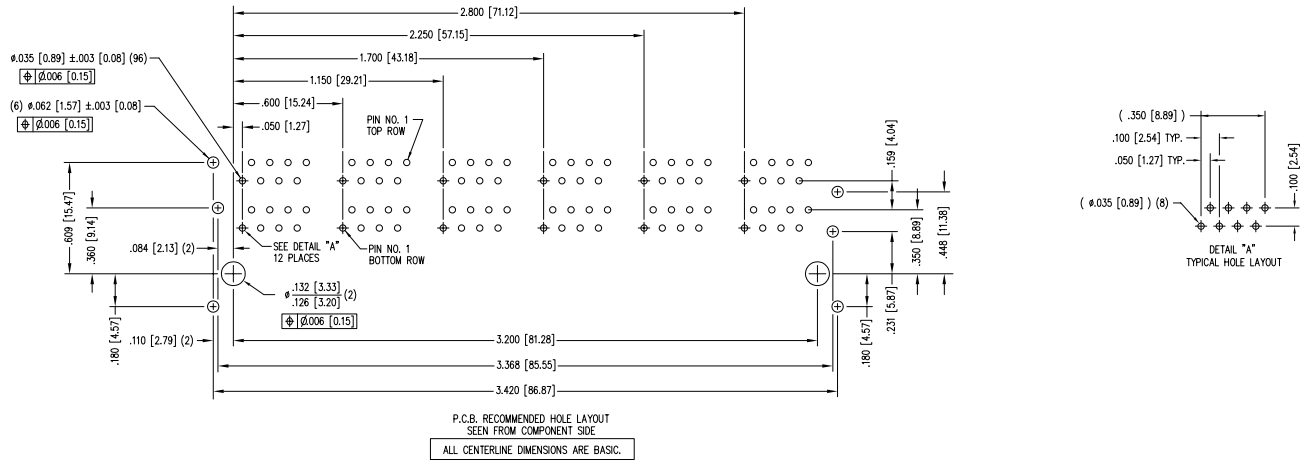
REV. 6/23/05

B

B

A

A



REV. 6/23/05

THIRD ANGLE PROJECTION	
DO NOT SCALE DRAWING	
DRAWING IS SUBJECT TO CHANGE WITHOUT NOTICE	
DIMENSIONS: INCHES (METRIC)	
UNLESS OTHERWISE SPECIFIED TOLERANCES ARE: ±.005 [0.13] ANGLES ARE ± 1°	
SHEET NO. 2 OF 2	



 1118 Susquehanna Trail South Gen Rock, PA 17327-9199 (717) 235-7512 <a href="http://www.stewartconnector.com">http://www.stewartconnector.com</a>	TITLE: EIGHT CONTACT, EIGHT POSITION SHIELDED STACK JACK ENHANCED SHIELD, 12 PORT (6 ON 6)	
	DRN BY: TRM DATE: 6-27-05	APPD BY: DHG DATE: 6-27-05
<small>THIS DRAWING AND THE SUBJECT MATTER SHOWN THEREON ARE CONFIDENTIAL AND THE PROPRIETARY PROPERTY OF STEWART CONNECTOR AND SHALL NOT BE REPRODUCED, COPIED, OR USED IN ANY MANNER WITHOUT PRIOR WRITTEN CONSENT OF STEWART CONNECTOR. THIS PRODUCT MAY BE PROTECTED BY ONE OR MORE OF THE FOLLOWING US PATENTS: 5791942 6217291 6368159 6419626 6502097 687722 694587 704590 708009 756963 768650 OTHER PATENTS MAY BE PENDING.</small>	DWG NO. CT730057 REV. C2	