

Excellent Integrated System Limited

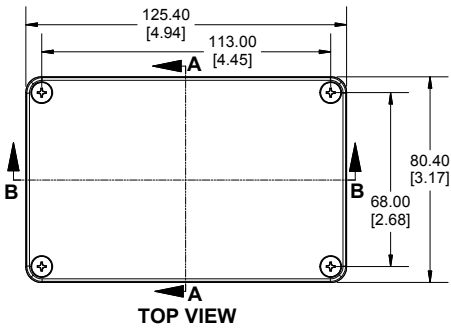
Stocking Distributor

Click to view price, real time Inventory, Delivery & Lifecycle Information:

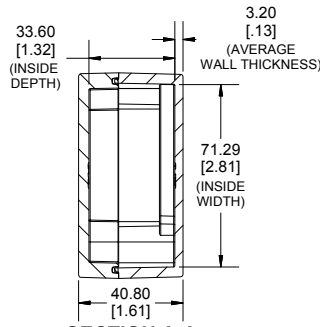
[Hammond Manufacturing](#)
[1550Z107](#)

For any questions, you can email us directly:

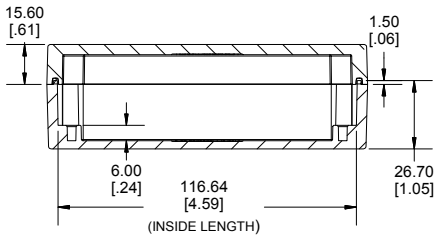
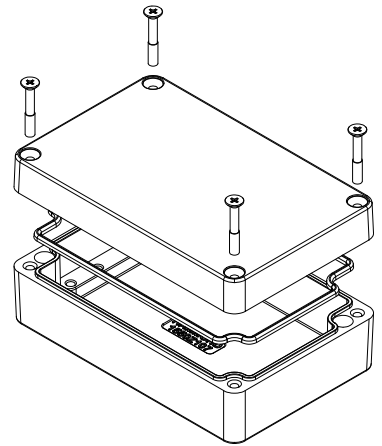
sales@integrated-circuit.com



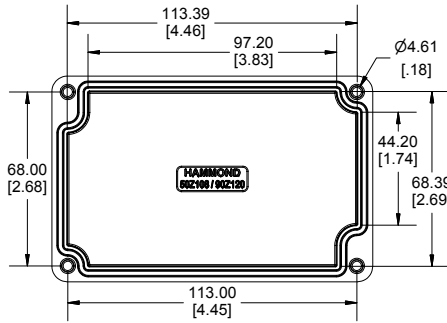
TOP VIEW



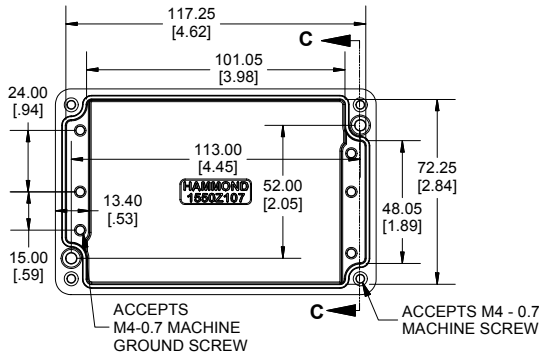
**SECTION A-A
END VIEW**



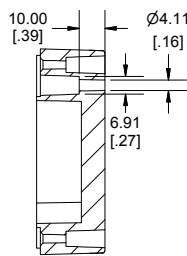
**SECTION B-B
SIDE VIEW**



INSIDE LID



INSIDE BOX



**SECTION C-C
MOUNTING HOLE**



Enclosures can be Factory Modified (Milling, Drilling, Printing etc.)
Contact Factory mjm@hammondmfg.com for quotes
Solid models of this enclosure available in STEP or IGES.
(Part number and text placement/orientation on our products are subject to change.
We do not recommend using them as a locating reference for modification purposes)

NOTE	
Purchased assembly includes box, lid, silicone gasket, and 4 cover screws. Box and lid are made from Diecast Aluminum Alloy.	
Screws should not be torqued past 5-7.5 lbf.in (50 -75 cN.m)	
PART NUMBERS	
1550Z107 Enclosure	
Basic Enclosure	1550Z107
Black Enclosure	1550Z107BK
Grey Enclosure - RAL7001 Gloss	1550Z107GY
ACCESSORIES	
Pre-Formed Silicone Gasket	1550Z107GASKET



**HAMMOND
MANUFACTURING.**

1550Z107

www.hammondmfg.com

Dimensions:
mm
[inches]