

Excellent Integrated System Limited

Stocking Distributor

Click to view price, real time Inventory, Delivery & Lifecycle Information:

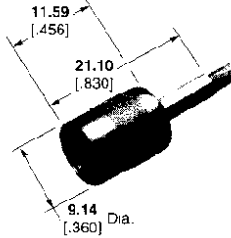
[TE Connectivity AMP Connectors](#)
[414075-6](#)

For any questions, you can email us directly:

sales@integrated-circuit.com

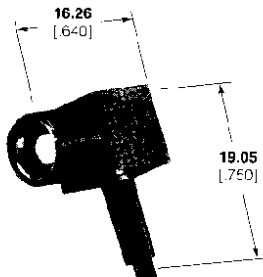
SMB Connectors, 75 Ohm

Straight Plugs



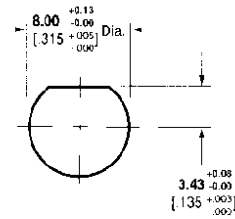
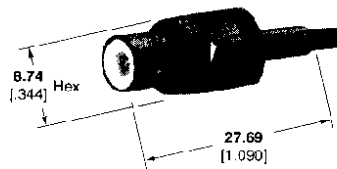
RG/U Cable	Center Contact Plating	Outer Body Plating	Outer Contact Plating	Dielectric	Style	Part No.
179, 179A, 179B, 161, 187, 187A, Belden 9221	Gold	Gold	Nickel	TEFLON	Mil Type	414818-1
	Gold	Nickel	Nickel	TEFLON	Mil Type	414818-2

Right Angle Plugs



RG/U Cable	Center Contact Plating	Outer Body Plating	Outer Contact Plating	Dielectric	Style	Part No.
179, 179A, 179B, 161, 187, 187A, Belden 9221	Gold	Gold	Nickel	TEFLON	Mil Type	414048-6
	Gold	Gold	Nickel	TEFLON	Commercial	415462-1*
	Gold	Nickel	Nickel	TEFLON	Mil Type	1-414048-3
	Gold	Nickel	Nickel	TEFLON	Commercial	415462-2*

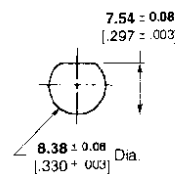
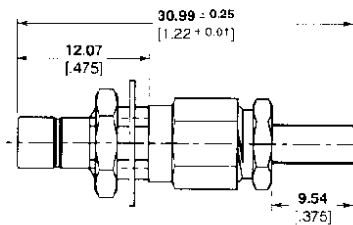
Straight Jacks



Maximum Panel Thickness 2.36 [.093]
 Recommended Panel Cutout

RG/U Cable	Center Contact Plating	Body Plating	Dielectric	Style	Part No.
179, 179A, 179B, 161, 187, 187A, Belden 9221	Gold	Nickel	TEFLON	Mil Type	414767-1

Blukhead Jacks



Recommended Panel Cutout

RG/U Cable	Center Contact Plating	Body Plating	Dielectric	Style	Part No.
179, 179A, 179B, 161, 187, 187A, Belden 9221	Gold	Front-Gold Rear-Nickel	TEFLON	Mil Type	414075-2
	Gold	Nickel	TEFLON	Mil Type	414075-6