

Excellent Integrated System Limited

Stocking Distributor

Click to view price, real time Inventory, Delivery & Lifecycle Information:

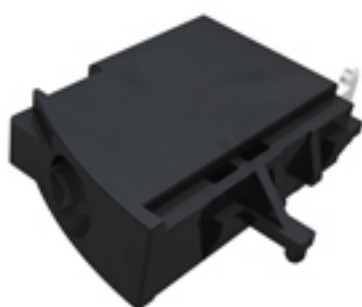
[Weidmüller](#)
[1137870000](#)

For any questions, you can email us directly:
sales@integrated-circuit.com

Datasheet

CH20M6
LHZ-SMT L 1.5SN BK BX

Weidmüller Interface GmbH & Co. KG
 Klingenbergstraße 16
 D-32758 Detmold
 Germany
 Fon: +49 5231 14-0
 Fax: +49 5231 14-2083
 www.weidmueller.com



Naturally, the CH20M system also shows its detailed perfection in the peripheral interface.

If you are taking into consideration design options, processing, usability, reliability and security, then pin headers and connectors are just as critical in the real world as the entire system.

In every sector, the connection technology is at the top of its class.

- **100% safe** protected against accidental touch
- **100% efficient** fully compatible with reflow soldering
- **100% time and cost savings** During the installation: the quick all-purpose "Multi-Tool" screw head ensures a secure contact, user-friendly operation and less complexity. Additional features, such as the "Wire ready" technology, enable you to minimize wiring costs and increase customer satisfaction.

General ordering data

Order No.	1137870000
Part designation	LHZ-SMT L 1.5SN BK BX
Version	PCB terminal, No. of poles: , 90°, Solder pin length: 1.5 mm, tinned, black6 mm², Box
GTIN (EAN)	4032248919741
Qty.	306 pc(s).
Packaging	Box

Datasheet

CH20M6 LHZ-SMT L 1.5SN BK BX

Weidmüller Interface GmbH & Co. KG
 Klingenbergstraße 16
 D-32758 Detmold
 Germany
 Fon: +49 5231 14-0
 Fax: +49 5231 14-2083
 www.weidmueller.com

Technical data

Dimensions (1)

Length	23.5 mm	Width	6 mm
Height	16.9 mm		

System parameters

Version	Connection element, left	Type of connection	Clamping yoke connection
No. of connections	1	PCB thickness	0.8 mm
Type of contact to PCB	Reflow	Contact to terminal rail	No
Protection class	IP 20		

Connectable conductors

Clamping range, min.	0.13 mm ²	Clamping range, max.	6 mm ²
Conductor connection cross-section AWG, min.	AWG 26	Conductor connection cross-section AWG, max.	AWG 10
Solid, min. H05(07) V-U	0.2 mm ²	Solid, max. H05(07) V-U	2.5 mm ²
Flexible, min. H05(07) V-K	0.2 mm ²	Flexible, max. H05(07) V-K	2.5 mm ²
w. plastic collar ferrule, DIN 46228 pt 4, min.	0.25 mm ²	with plastic collar ferrule, DIN 46228 pt 4, max.	2.5 mm ²

Material data

Flammability class UL 94	V-0	Insulating material	LCP
Colour	black	Contact surface	tinned
Highest continuous operating temperature, min.	-20 °C	Highest continuous operating temperature, max.	85 °C

Rating data to DIN IEC

Rated voltage for overvoltage class/pollution severity II/2	400 V	Rated voltage for overvoltage class/pollution severity III/2	320 V
Rated voltage at overvoltage category/pollution degree III/3	250 V	Rated impulse withstand voltage for overvoltage class/pollution severity II/2	4 kV
Rated impulse withstand voltage for overvoltage class/pollution severity III/2	4 kV	Rated impulse withstand voltage for overvoltage class/pollution severity III/3	4 kV

Classifications

eClass 6.0	27-26-11-01
------------	-------------