

Excellent Integrated System Limited

Stocking Distributor

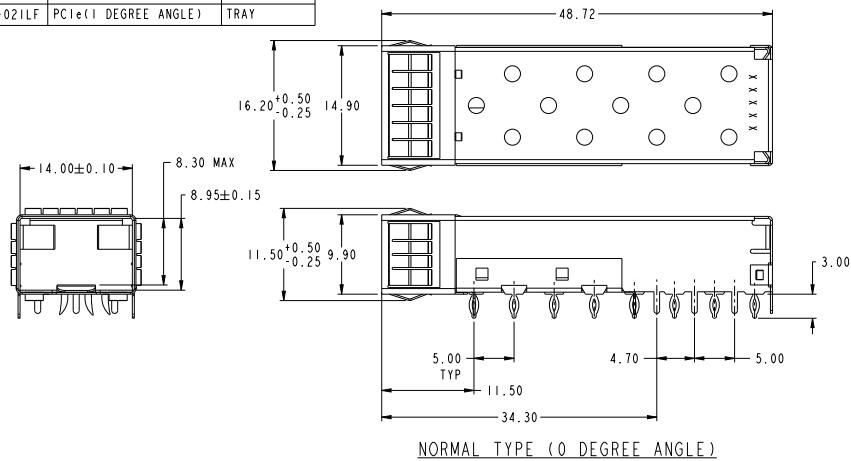
Click to view price, real time Inventory, Delivery & Lifecycle Information:

[FCI](#)
[10099100-011LF](#)

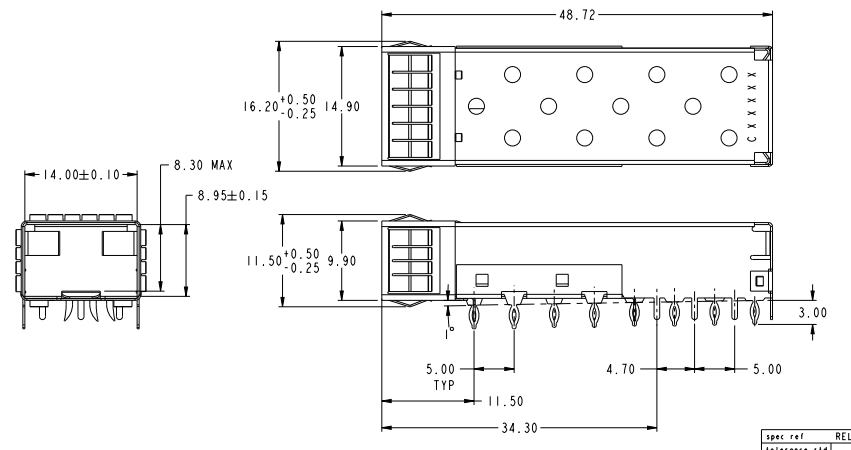
For any questions, you can email us directly:
sales@integrated-circuit.com

PRODUCT NUMBER	MOUNTING TYPE	PACKAGING
10099100-011LF	NORMAL (0 DEGREE ANGLE)	TRAY
10099100-021LF	PCIe (1 DEGREE ANGLE)	TRAY

A
B
C
D
E
F



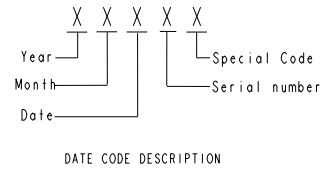
NORMAL TYPE (0 DEGREE ANGLE)



PCIe TYPE (1 DEGREE ANGLE)

NOTES:

1. MATERIAL: COPPER ALLOY.
2. PLATING:
CAGE BODY: 1.27µm MIN. NICKEL PLATING OVER ALL.
EMI FINGER: 1.27µm MIN NICKEL PLATING OVER ALL.
3. DATUM AND BASIC DIMENSIONS ARE ESTABLISHED BY CUSTOMER.
4. PADS AND VIAS ARE CHASSIS GROUND, 11 PLACES.
5. THROUGH HOLES, PLATING OPTIONAL.
6. CROSS-HATCHED AREA DENOTES COMPONENT AND TRACE KEEP-OUT (EXCEPT CHASSIS GROUND).
7. THIS AREA DENOTES COMPONENT KEEP-OUT (TRACES ALLOWED).
8. PRODUCT SPECIFICATION: GS-12-616
9. APPLICATION SPECIFICATION: GS-20-125
10. PRODUCT MEETS EUROPEAN UNION DIRECTIVES AND OTHER COUNTRY REGULATIONS AS DESCRIBED IN GS-22-008.
11. DATE CODE BE PRINTED ON PROPER SURFACE.
12. PRINTED "C" MARK BEFORE DATE CODE FOR P/N: -021LF (FC1e TYPE).



Copyright FCI

spec. ref.	RELEASE	dr.	www.fci.com	projection	MM	size	A2	scale	2:1
tolerance s14	TOLERANCES UNLESS OTHERWISE SPECIFIED	eng	www.fci.com	product family	SFP+	rel. level	Released		
ASME Y14.5		chr	www.fci.com	product	SFP+	rel. level	Released		
surface	linear	0.1 ±0.25	FCI	SFP+ IXI Cage		10099100			
	angular	0.15 ±0.15	www.fci.com	EMI FINGER TYPE					
ASME Y14.5		0.15 ±0.15	www.fci.com	Product - Customer Draw					

PDS: Rev:D

STATUS: Released

Printed: Feb 15, 2012

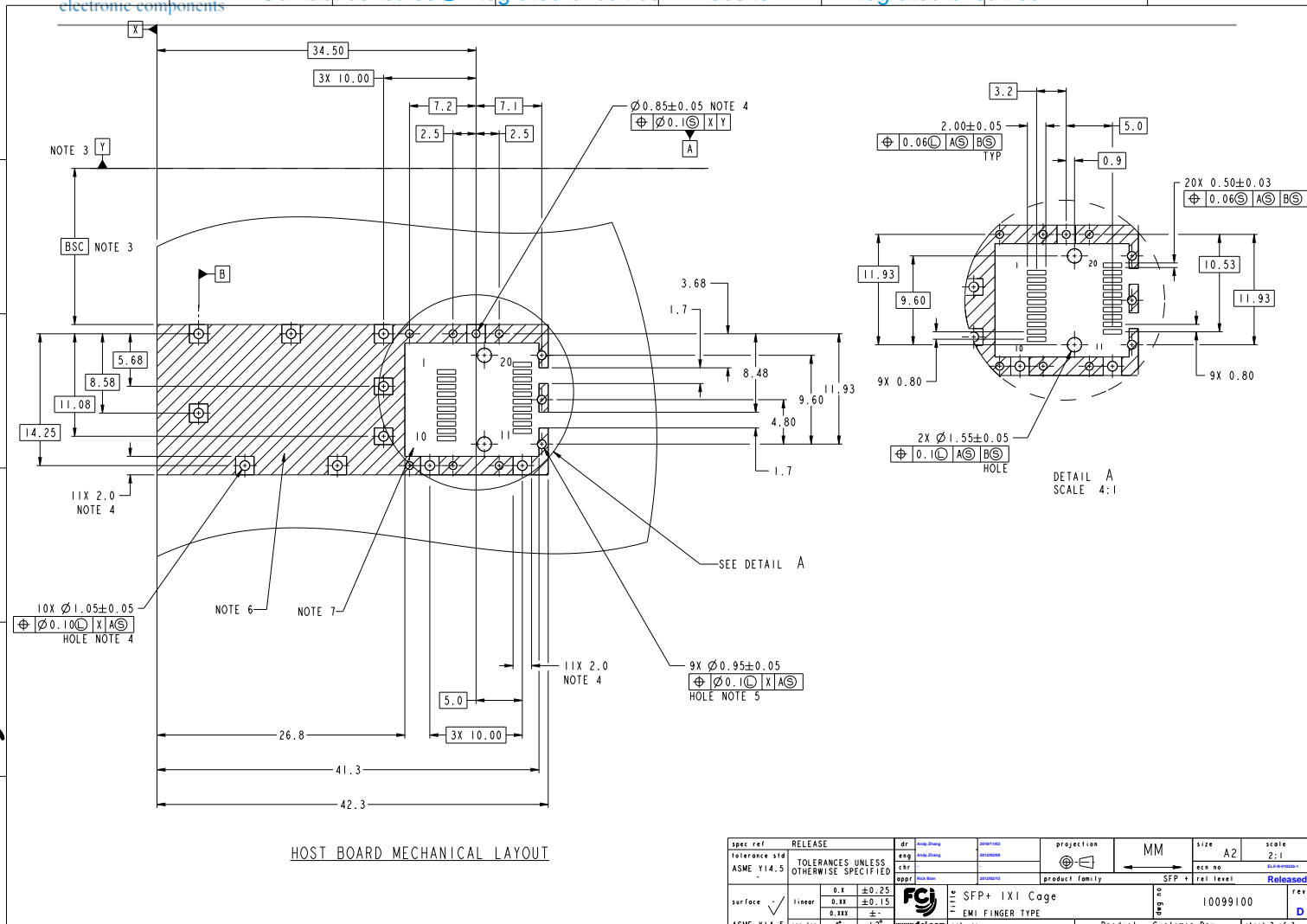
2

3

4

5

A
B
C
D
E
F

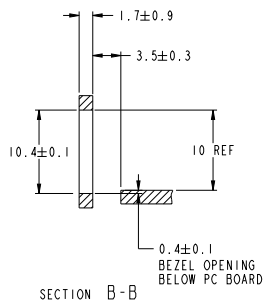
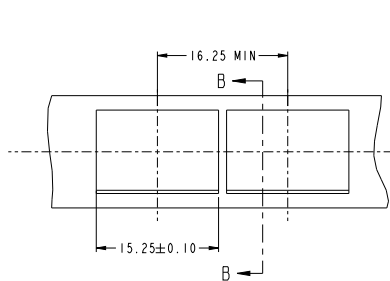


spec. ref.	RELEASE	dr.	MM	projection	MM	size	A2	scale	2:1
tolerance std	TOLERANCES UNLESS OTHERWISE SPECIFIED	eng	CHP	proj	MM	pcn no.		rel. level	Released
ASME Y14.5		appr		product family	SFP+				
surface	linear	0.1	±0.25	FCI SFP+ IXI Cage		10099100		rev	D
ASME Y14.5	angular	0.2X	±0.15	EMI FINGER TYPE					
		0.2X	±	www.fci.com cat. no.		Product - Customer Draw		sheet 2 of 3	

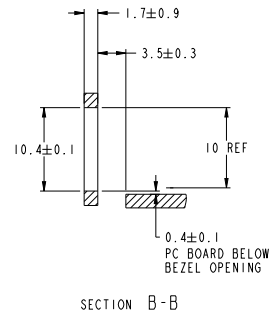
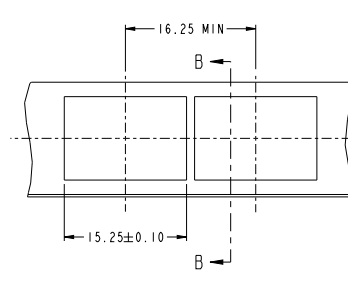
PDS: Rev:D STATUS: Released Printed: Feb 15, 2012

Copyright FCI

PRODUCT NUMBER	MOUNTING TYPE
10099100-011LF	NORMAL TYPE
10099100-021LF	FCI _e TYPE



RECOMMENDED PANEL DESIGN
FOR NORMAL TYPE



RECOMMENDED PANEL DESIGN
FOR FCI_e TYPE

Copyright FCI

spec. ref.	RELEASE	dr.	10099100	projection	MM	size	A2	scale	2:1
tolerance	ASME Y14.5	eng	10099100	product family	SFP+	rel. level	Released		
surface	linear	0.1	±0.25	FCI	SFP+ IXI Cage	10099100			
	angular	0.2X	±0.15	www.fci.com	EMI FINGER TYPE				

PDS: Rev:D

STATUS: Released

Printed: Feb 15, 2012