

Excellent Integrated System Limited

Stocking Distributor

Click to view price, real time Inventory, Delivery & Lifecycle Information:

[Samtec, Inc.](#)
[SMA-J-P-H-ST-TH1](#)

For any questions, you can email us directly:

sales@integrated-circuit.com

REVISION F

DO NOT
SCALE FROM
THIS PRINT

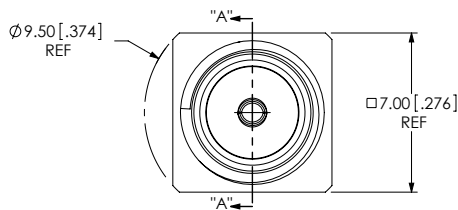


TABLE 1		
ITEM	COMPONENT	-H
1	SHELL	SMA-J-P-F-ST-TH1-SHL
2	RING	SMA-J-P-F-ST-TH1-RNG
3	INSULATOR	SMA-J-P-TH1-INS
4	SOCKET	SMA-SKT-005-H

**DESIGNED & DIMENSIONED
IN MILLIMETERS[INCHES]**

SMA-J-P-X-ST-TH1

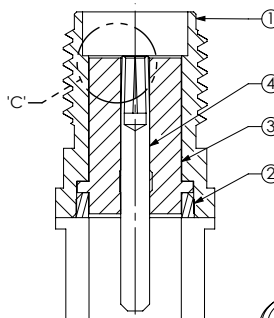
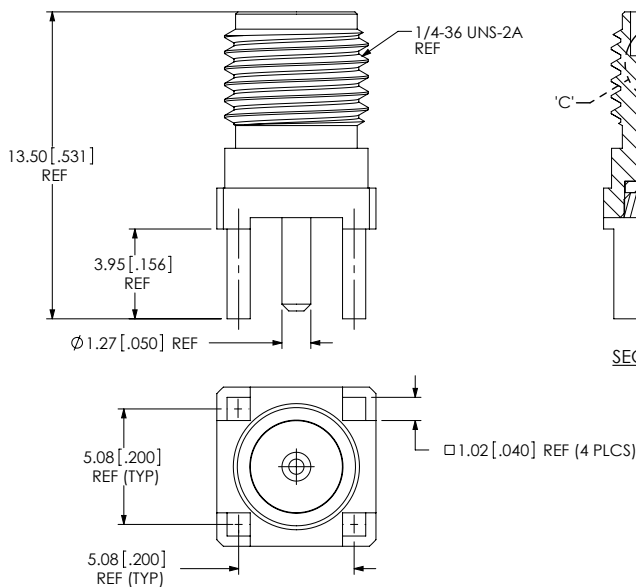
GENDER
-J: JACK

TERMINATION
-TH1: THROUGH HOLE

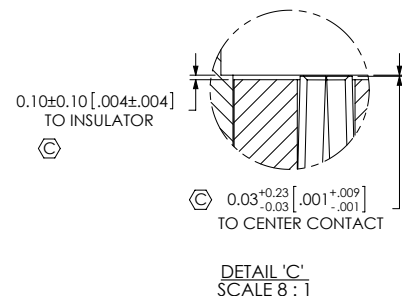
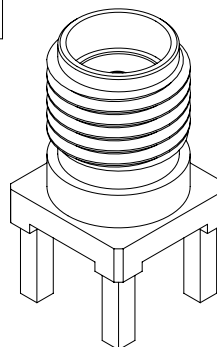
TYPE
-P: PCB

ORIENTATION
-ST: STRAIGHT

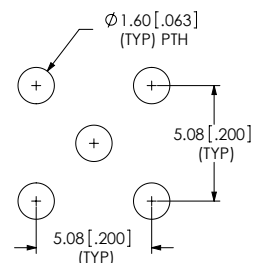
PLATING SPECIFICATION
-H: 30µ" GOLD CENTER CONTACT,
3µ" GOLD OUTER CONTACT
(SEE TABLE 1)



SECTION "A"- "A"



RECOMMENDED PCB LAYOUT



NOTES:

1. Ⓢ REPRESENTS A CRITICAL DIMENSION.
2. MINIMUM PUSHOUT FORCE FOR INSULATOR: 44.48 N[10 LB].
3. MINIMUM CENTER CONTACT PUSHOUT FORCE: 13.35 N [3 LBS].
4. PRODUCT TO BE PACKAGED PER PACKAGING STANDARD CO-RF-WI-3040-M.
5. NOTE DELETED.
6. NOTE DELETED.
7. NOTE DELETED.

UNLESS OTHERWISE SPECIFIED,
DIMENSIONS ARE IN
MILLIMETERS [INCHES].
TOLERANCES ARE:
DECIMALS ANGLES
.X: ±0.3 [.01] 5°
.XX: ±0.13 [.005]
.XXX: ±0.051 [.0020]

PROPRIETARY NOTE

THIS DOCUMENT CONTAINS INFORMATION
CONFIDENTIAL AND PROPRIETARY TO
SAMTEC, INC., AND SHALL NOT BE REPRODUCED
OR TRANSFERRED TO OTHER DOCUMENTS OR
DISCLOSED TO OTHERS OR USED FOR ANY
PURPOSE OTHER THAN THAT WHICH IT WAS
OBTAINED WITHOUT THE EXPRESSED WRITTEN
CONSENT OF SAMTEC, INC.

MATERIAL: DO NOT SCALE DRAWING

SHEET SCALE: 4:1

SHELL, RING: BRASS
SOCKET: COPPER ALLOY
DIELECTRIC: PTFE

samtec

520 PARK EAST BLVD, NEW ALBANY, IN 47150
PHONE: 812-944-6733 FAX: 812-948-5047
e-Mail: info@SAMTEC.com code: 55322

DESCRIPTION:
SMA STRAIGHT, THROUGH HOLE JACK- 50 OHM

DWG. NO. **SMA-J-P-X-ST-TH1**

BY: R MUSSER 01/28/2008 SHEET 1 OF 1