

Excellent Integrated System Limited

Stocking Distributor

Click to view price, real time Inventory, Delivery & Lifecycle Information:

[Bel Fuse Inc.](#)
[142-0791-821](#)

For any questions, you can email us directly:
sales@integrated-circuit.com



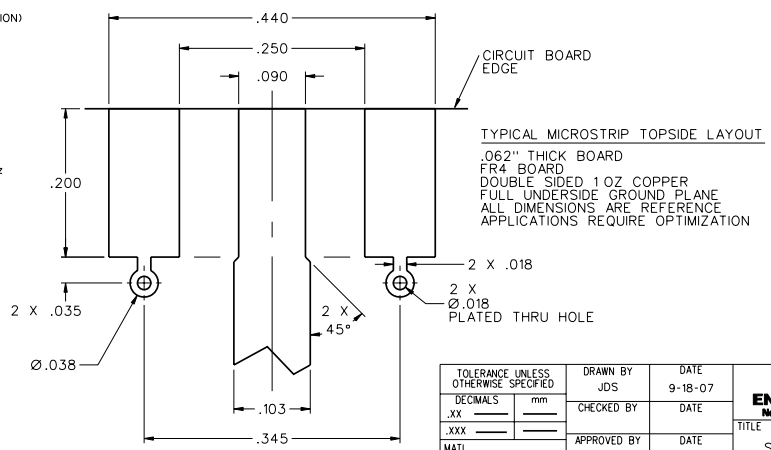
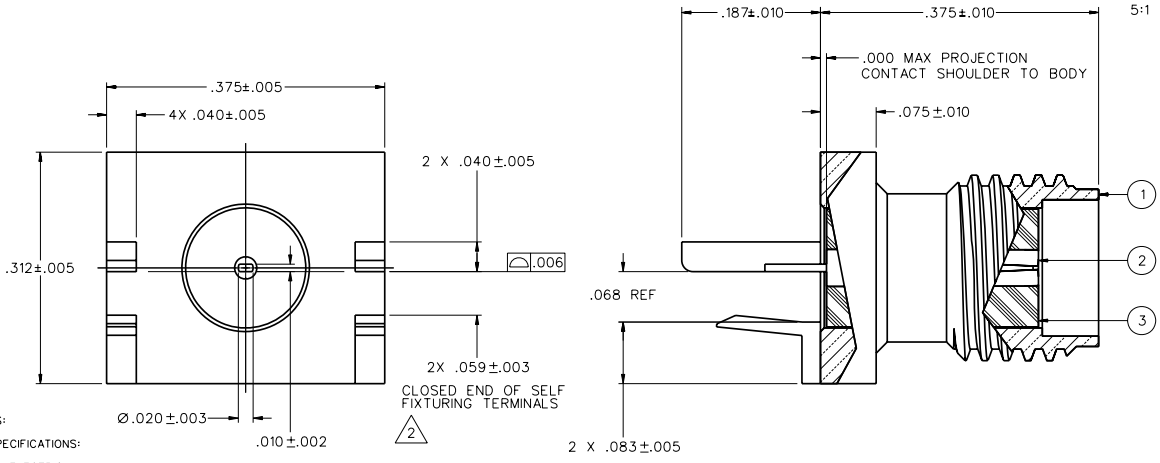
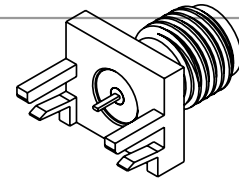
Distributor of Bel Fuse Inc.: Excellent Integrated System Limited

Datasheet of 142-0791-821 - CONN SMA JACK 50 OHM EDGE MNT

Contact us: sales@integrated-circuit.com Website: www.integrated-circuit.com

PART NUMBER	ITEM ① ELECTRONIC COMPONENT	ITEM ② CONTACT	ITEM ③ INSULATOR
142-0791-821	BODY BRASS GOLD PL .00001 MIN OVER NICKEL PL .00005 MIN OVER COPPER PL .00005 MIN	BERYLLIUM COPPER GOLD PL .00005 MIN OVER NICKEL PL .00005 MIN OVER COPPER PL .00005 MIN	TEFLON

DRAWING NO.
C - 142-0791-821/830
0 REVISIONS



FOR QUOTATION ONLY
UNAPPROVED
CUSTOMER DRAWING
THIS DRAWING TO BE INTERPRETED PER ASME Y 14.5M - 1994
"μ STATION"
COMPANY CONFIDENTIAL

2. ALL CONNECTOR TERMINALS ARE INTENDED TO BE SOLDERED TO CIRCUIT BOARD.
3. EMERSON NETWORK POWER CONNECTIVITY SOLUTIONS SELF FIXTURE END LAUNCH CONNECTORS ARE COVERED UNDER U.S. PATENT NUMBER 7,500,855.

TOLERANCE UNLESS OTHERWISE SPECIFIED		DRAWN BY	DATE	Connectivity Solutions	
DECIMALS	mm	JDS	9-18-07	P.O. Box 1732	
.XX		CHECKED BY	DATE	Waseco, MN 56093	
.XXX		APPROVED BY	DATE	1-800-247-8256	
MATL		RELEASE DATE		TITLE	
FINISH		U/M	INCH	SCALE	10:1
				SHEET	2 OF 2
				DRAWING NO.	C - 142-0791-821/830