

Excellent Integrated System Limited

Stocking Distributor

Click to view price, real time Inventory, Delivery & Lifecycle Information:

[FCI](#)
[10090930-P150ALF](#)

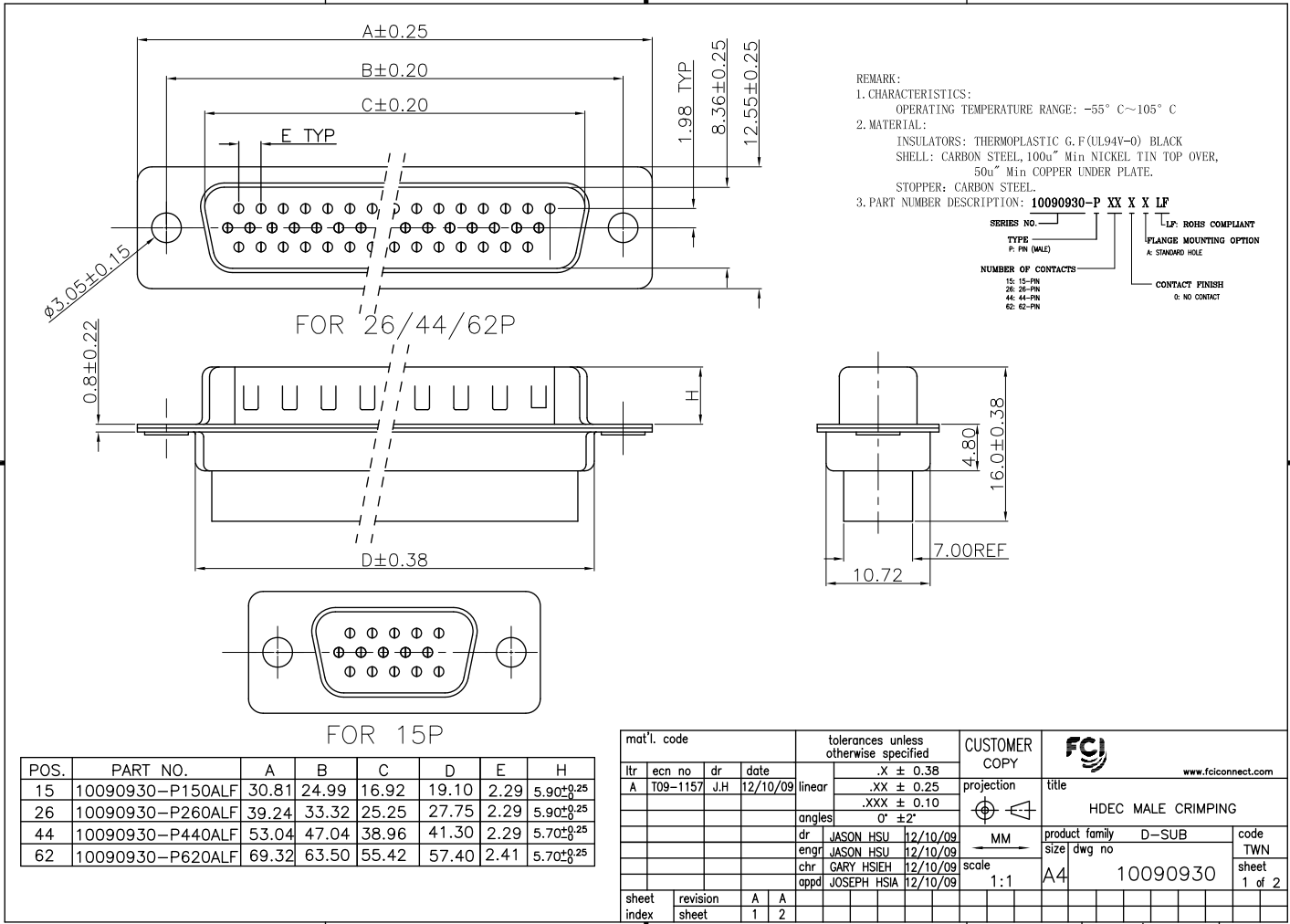
For any questions, you can email us directly:

sales@integrated-circuit.com

Tous droits strictement réservés. Reproduction ou communication à des tiers interdite sous quelque forme que ce soit sans autorisation écrite du propriétaire. Propriété de c FCI. Droits de reproduction FCI.



All rights strictly reserved. Reproduction or issue to third parties in any form whatever is not permitted without written authority from the proprietor. Property of FCI. Copyright FCI.



REMARK:
 1. CHARACTERISTICS:
 OPERATING TEMPERATURE RANGE: -55° C~105° C
 2. MATERIAL:
 INSULATORS: THERMOPLASTIC G.F.(UL94Y-0) BLACK
 SHELL: CARBON STEEL, 100u" Min NICKEL TIN TOP OVER,
 50u" Min COPPER UNDER PLATE.
 STOPPER: CARBON STEEL.
 3. PART NUMBER DESCRIPTION: **10090930-P XX X X LF**
 SERIES NO. _____
 TYPE: P: PIN (MALE)
 NUMBER OF CONTACTS: _____
 15: 15-PIN
 26: 26-PIN
 44: 44-PIN
 62: 62-PIN
 LF: ROHS COMPLIANT
 FLANGE MOUNTING OPTION
 A: STANDARD HOLE
 CONTACT FINISH
 0: NO CONTACT

mat'l. code		tolerances unless otherwise specified		CUSTOMER COPY		FCI	
ltr	ecn no	dr	date	linear	.X ± 0.38	projection	title
A	T09-1157	J.H	12/10/09	linear	.XX ± 0.25		HDEC MALE CRIMPING
				angles	.XXX ± 0.10		
					0° ± 2°	product family	D-SUB
				dr	JASON HSU 12/10/09	size	MM
				enrg	JASON HSU 12/10/09	dwg no	
				chr	GARY HSIEH 12/10/09	scale	1:1
				appd	JOSEPH HSIA 12/10/09	A4	10090930
sheet index	revision sheet	A	A				code TWN
		1	2				sheet 1 of 2

ACAD

PDM: Rev:A

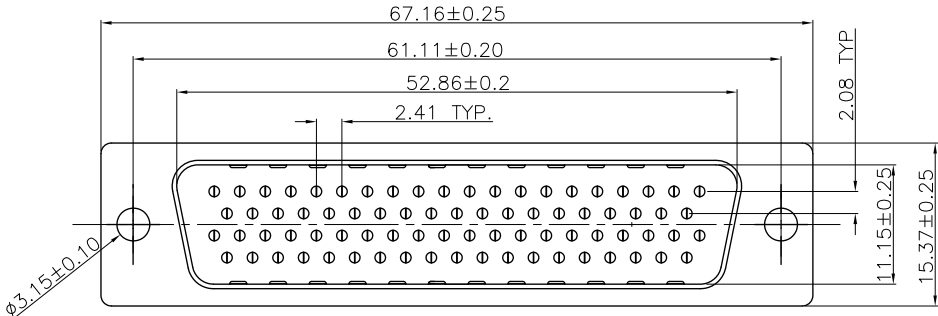
STATUS: Released

Printed: Dec 24, 2009

Tous droits strictement réservés. Reproduction ou communication à des tiers interdite sous quelque forme que ce soit sans autorisation écrite du propriétaire. Propriété de c FCI. Droits de reproduction FCI.



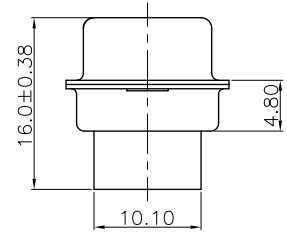
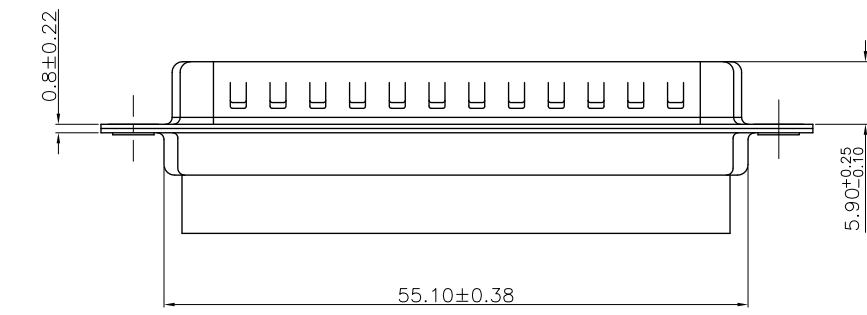
All rights strictly reserved. Reproduction or issue to third parties in any form whatever is not permitted without written authority from the proprietor. Property of FCI. Copyright FCI.



REMARK:
 1. CHARACTERISTICS:
 OPERATING TEMPERATURE RANGE: -55° C~105° C
 2. MATERIAL:
 INSULATORS: THERMOPLASTIC G.F(UL94V-0) BLACK
 SHELL: CARBON STEEL, 100u" Min NICKEL TIN TOP OVER,
 50u" Min COPPER UNDER PLATE.
 STOPPER: CARBON STEEL.
 3. PART NUMBER DESCRIPTION: **10090930-P XX X X LP**

SERIES NO. _____
 TYPE P: FN (MALE)
 NUMBER OF CONTACTS: 78-78-FN

LF: ROHS COMPLIANT
 FLANGE MOUNTING OPTION
 A: STANDARD HOLE
 CONTACT FINISH
 0: NO CONTACT



PART NO.: 10090930-P780ALF

mat'l. code		tolerances unless otherwise specified		CUSTOMER COPY		FCI	
ltr	ecn no	dr	date	linear	projection	title	www.fciconnect.com
A				.X ± 0.38		HDEC 78P MALE CRIMPING	
				.XX ± 0.25			
				.XXX ± 0.10			
				angles	0° ± 2°		
		dr	JASON HSU	12/10/09	MM	product family D-SUB	code TWN
		enrg	JASON HSU	12/10/09	scale	size dwg no	sheet
		chr	GARY HSIEH	12/10/09	1:1	A4	10090930
		appd	JOSEPH HSIA	12/10/09			2 of 2
sheet index	revision sheet						