

Excellent Integrated System Limited

Stocking Distributor

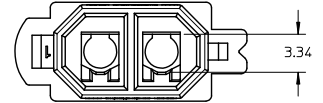
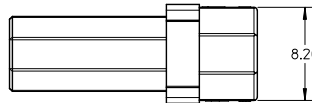
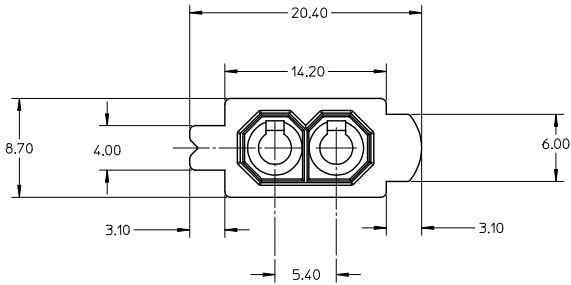
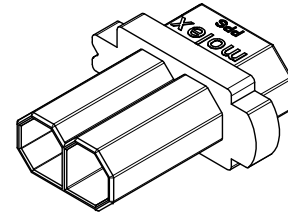
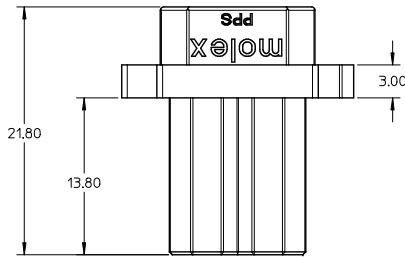
Click to view price, real time Inventory, Delivery & Lifecycle Information:

[Molex Connector Corporation](#)
[0781961001](#)

For any questions, you can email us directly:

sales@integrated-circuit.com

10 9 8 7 6 5 4 3 2 1



NOTES:

1. MATERIAL: PPS GLASS/MINERAL FILLED, UL94V-0, COLOR: BLACK
2. MATE WITH 78197 SERIES.
3. TERMINAL TO BE USED : P/N 78036-2005.
4. PACKAGING INFORMATION : BULK PACKAGING IN POLYBAG.
5. PRODUCT SPECIFICATION : PS-78196-001

MOD. CHAMFER EC NO. S2009-0777 DRAWN: JANG2 CHK: KILIM APPR: BOKOK	2009/03/27 2009/03/30 2009/03/31	QUALITY SYMBOLS ▽=0 ▽=0	GENERAL TOLERANCES (UNLESS SPECIFIED)		DIMENSION STYLE MM ONLY		SCALE NTS	DESIGN UNITS METRIC	THIRD ANGLE PROJECTION	
			4 PLACES ± --- ± --- 3 PLACES ± --- ± --- 2 PLACES ± 0.3 ± --- 1 PLACE ± 0.5 ± --- ANGULAR ± 3 °	mm INCH ± --- ± --- ± --- ± --- ± --- ± --- ± --- ± ---	DRAWN BY BOKOK	DATE 2007/05/02	TITLE PROJECTOR LAMP CONNECTOR 5.4MM PITCH, RECEPTACLE HOUSING			
DRAFT WHERE APPLICABLE MUST REMAIN WITHIN DIMENSIONS		APPROVED BY KCLING		DATE 2007/05/09		MATERIAL NO. 78196-1001		DOCUMENT NO. SD-78196-002		SHEET NO. 1 OF 1

9 8 7 6 5 4 3 2 1