

Excellent Integrated System Limited

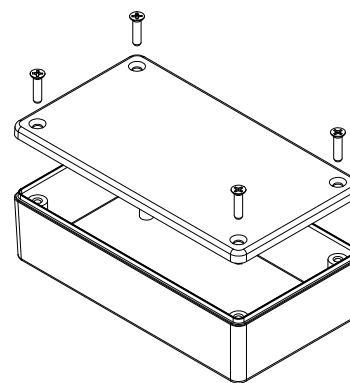
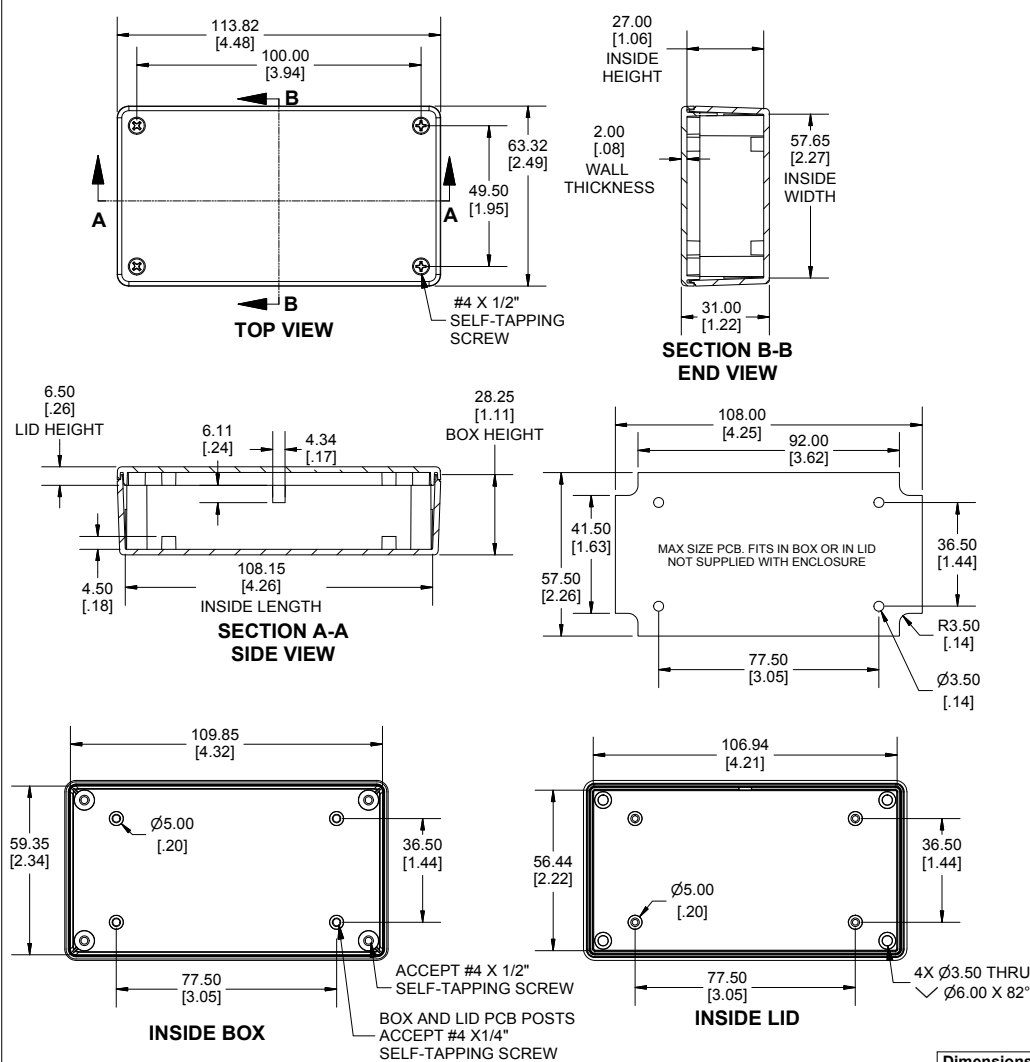
Stocking Distributor

Click to view price, real time Inventory, Delivery & Lifecycle Information:

[Hammond Manufacturing](#)
[1591XXBSBK](#)

For any questions, you can email us directly:

sales@integrated-circuit.com



Enclosures can be Factory Modified (Milling, Drilling, Printing etc.)
Contact Factory mjm@hammondmg.com for quotes
Solid models of this enclosure available in STEP or IGES.
(Part number and text placement/orientation on our products are subject to change, we do not recommend using them as a locating reference for modification purposes)

NOTE

Purchased assembly includes box, lid and
Enclosure molded from GPABS Plastic.
Other materials / colours available consult factory.

Recommended Torque : (35-43) Ozf.in / (25-30) cNm

PART NUMBERS

1591XXBS Enclosure	
Black Textured Enclosure	1591XXBSBK
ACCESSORIES	
Black Cover Screws #4 X 1/2" SelfTapping	1591TS100BK (Pkg 100)
Plated Cover Screws #4 X 1/2" SelfTapping	1591TS100 (Pkg 100)
P.C. Board Screws (#4 x 1/4" selfTapping (6.4mm))	1593ATS50 (Pkg 50)
	1593ATS100 (Pkg 100)



**HAMMOND
MANUFACTURING.**

1591XXBS

www.hammondmg.com

Dimensions:
mm
[inches]