

## Excellent Integrated System Limited

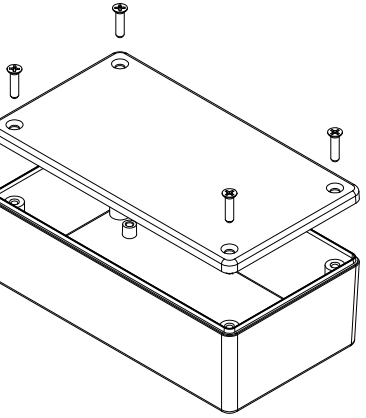
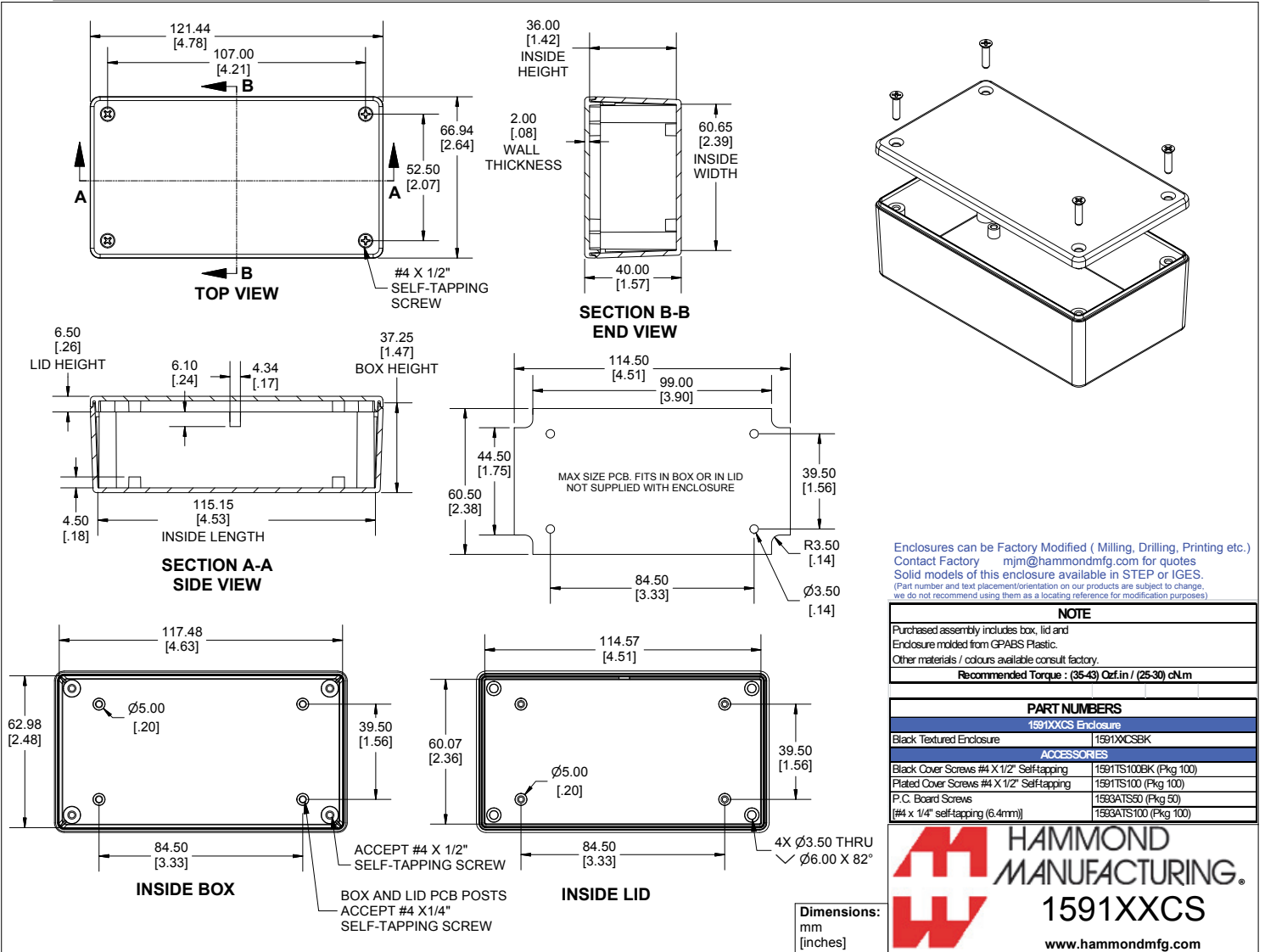
Stocking Distributor

Click to view price, real time Inventory, Delivery & Lifecycle Information:

[Hammond Manufacturing](#)  
[1591XXCSBK](#)

For any questions, you can email us directly:

[sales@integrated-circuit.com](mailto:sales@integrated-circuit.com)



Enclosures can be Factory Modified ( Milling, Drilling, Printing etc.)  
 Contact Factory mjm@hammondmfg.com for quotes  
 Solid models of this enclosure available in STEP or IGES.  
 (Part number and text placement/orientation on our products are subject to change, we do not recommend using them as a locating reference for modification purposes)

PART NUMBERS	
1591XXCS Enclosure	
Black Textured Enclosure	1591XXCSBK
ACCESSORIES	
Black Cover Screws #4 X 1/2" SelfTapping	1591TS100BK (Pkg 100)
Plated Cover Screws #4 X 1/2" SelfTapping	1591TS100 (Pkg 100)
P.C. Board Screws (#4 x 1/4" self-tapping (6.4mm))	1593ATS50 (Pkg 50)
	1593ATS100 (Pkg 100)

**HAMMOND MANUFACTURING.**  
**1591XXCS**  
 www.hammondmfg.com