

Excellent Integrated System Limited

Stocking Distributor

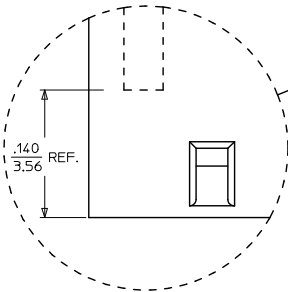
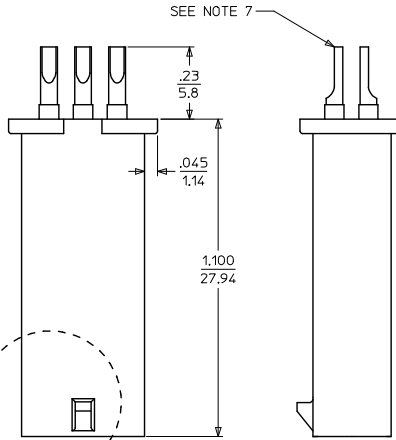
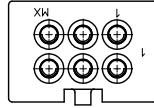
Click to view price, real time Inventory, Delivery & Lifecycle Information:

[Molex Connector Corporation](#)
[0442420006](#)

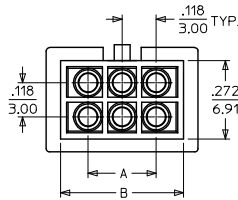
For any questions, you can email us directly:

sales@integrated-circuit.com

MATERIAL NUMBER	NUMBER OF CIR	DIM. 'A'	DIM. 'B'
44242-0001	4	.118/(3.00)	.308/(7.82)
44242-0002	6	.236/(6.00)	.426/(10.82)
44242-0003	8	.354/(9.00)	.544/(13.82)
44242-0004	10	.472/(12.00)	.662/(16.82)
44242-0005	12	.591/(15.00)	.780/(19.82)
44242-0006	14	.709/(18.00)	.898/(22.82)
44242-0007	16	.827/(21.00)	1.017/(25.82)
44242-0008	18	.945/(24.00)	1.135/(28.82)
44242-0009	20	1.063/(27.00)	1.253/(31.82)
44242-0010	22	1.181/(30.00)	1.371/(34.82)
44242-0011	24	1.299/(33.00)	1.489/(37.82)



PROBE LOCATION WITHIN HOUSING (SCALE: 8X)



NOTES:

- MATERIAL:
HOUSING: LCP, COLOR BLACK.
POGO-PIN PROBE: HEAT TREATED BERYLLIUM COPPER.
POGO-PIN RECEPTACLE: WORK-HARDENED NICKEL SILVER.
- FINISH:
POGO-PIN PROBE: GOLD PLATED OVER HARD NICKEL.
POGO-PIN RECEPTACLE: GOLD PLATED OVER HARD NICKEL.
- PRODUCT SPECIFICATION: PS-43045
- THIS PRODUCT IS INTENDED TO BE USED AS A TESTER FOR CONTINUITY ONLY.
- DO NOT MAKE OR BREAK CONTACT UNDER LOAD.
- MAXIMUM CURRENT CARRYING CAPACITY OF POGO-PIN IS 2.5 AMPERES.
- SOLDER CUP WILL ACCEPT 22-26 GAUGE WIRE. SOLDER CUP ORIENTATION IS RANDOM.
- MAXIMUM MATING CYCLES OF TEST PLUG IS 10,000 CYCLES.
- TEST PLUG CAN BE USED FOR TESTING BOTH SINGLE ROW AND DUAL ROW CONNECTORS. FOR SINGLE ROW CONNECTORS, USE A TEST PLUG THAT HAS TWICE THE NUMBER OF CIRCUITS AS THE SINGLE ROW CONNECTOR BEING TESTED.

FIX NOTE 7/DIMS EC NO: UCP2013-1516 DRAWING: ROH 2012/10/17 CHK'D: S0USEK 2012/10/17 APPR'D: SMITH 2012/10/19	QUALITY SYMBOLS 	GENERAL TOLERANCES (UNLESS SPECIFIED)		DIMENSION STYLE		SCALE	DESIGN UNITS	THIRD ANGLE PROJECTION		
				IN/MM		4:1	INCH			
		4 PLACES ±---	±---	DRAWN BY	DATE	TITLE MICRO-FIT(3,0) 4-24 CIRCUIT TEST PLUG ASSY - BMI COMPATIBLE 				
		3 PLACES ±---	±.010	CHECKED BY	DATE					
2 PLACES ±0.25	±.014	APPROVED BY	DATE							
1 PLACE ±0.35	±---	EDGLEY	1998/09/10	MATERIAL NO.		DOCUMENT NO.		SHEET NO.		
0 PLACE ±	±	EDGLEY	1998/09/10	SEE CHART		SD-44242-001		1 OF 1		
DRAFT WHERE APPLICABLE MUST REMAIN WITHIN DIMENSIONS SIZE C THIS DRAWING CONTAINS INFORMATION THAT IS PROPRIETARY TO MOLEX INCORPORATED AND SHOULD NOT BE USED WITHOUT WRITTEN PERMISSION										