

Excellent Integrated System Limited

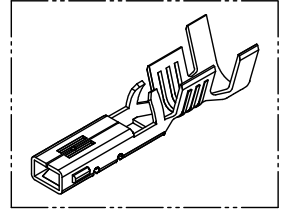
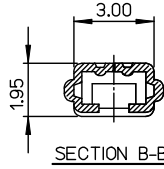
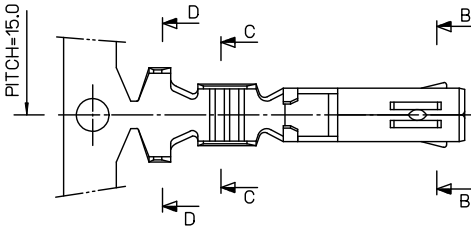
Stocking Distributor

Click to view price, real time Inventory, Delivery & Lifecycle Information:

[Molex Connector Corporation](#)
[0357460310](#)

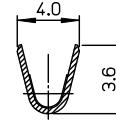
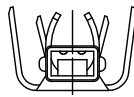
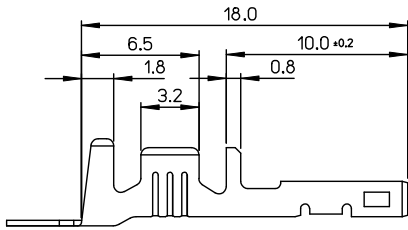
For any questions, you can email us directly:
sales@integrated-circuit.com

10 9 8 7 6 5 4 3 2 1

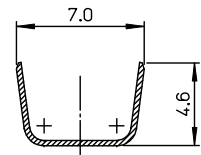


NOTES

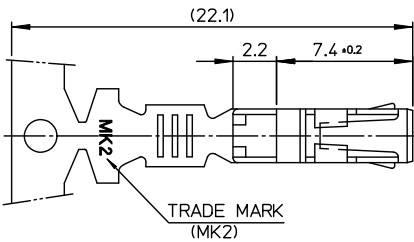
1. MATERIAL : PHOSPHOR BRONZE
0.3mm THICKNESS
2. FINISH : PRE-PLATED TIN
3. RECOMMENDED LENGTH OF WIRE STRIP IS 4.0-4.8mm.
- ④ 4. APPLICABLE WIRE SIZE : AWG #20+#20
AWG #20+#18
AWG #18+#18



SECTION C-C



SECTION D-D



REVISED EC NO: KOR2016-0060 2015/12/24 DRAWN: JSSHIN CHKD: SHCHU 2015/12/28 APPR:	DESCRIPTION	QUALITY SYMBOLS	GENERAL TOLERANCES (UNLESS SPECIFIED)		DIMENSION STYLE MM ONLY		SCALE 5:1	DESIGN UNITS METRIC	THIRD ANGLE PROJECTION		
		▼=0 ▽=0	4 PLACES ± --- ± --- 3 PLACES ± --- ± --- 2 PLACES ± 0.30 ± --- 1 PLACE ± 0.30 ± --- ANGULAR ± 1°	mm INCH	DRAWN BY BKCHOI CHECKED BY BKCHOI APPROVED BY CWLEE	DATE 1992/11/17 DATE 1992/11/17 DATE 1992/11/17	TITLE .070 FEMALE TERMINAL (A-TYPE)	MOLEX INCORPORATED	MATERIAL NO. 357460310	DOCUMENT NO. SD-35746-003	SHEET NO. 1 OF 01
DRAFT WHERE APPLICABLE MUST REMAIN WITHIN DIMENSIONS			THIS DRAWING CONTAINS INFORMATION THAT IS PROPRIETARY TO MOLEX INCORPORATED AND SHOULD NOT BE USED WITHOUT WRITTEN PERMISSION								

10 9 8 7 6 5 4 3 2 1