

Excellent Integrated System Limited

Stocking Distributor

Click to view price, real time Inventory, Delivery & Lifecycle Information:

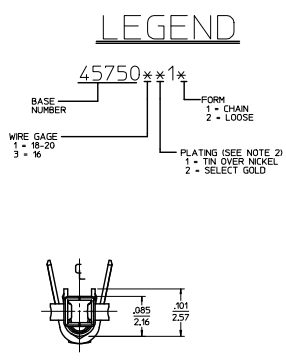
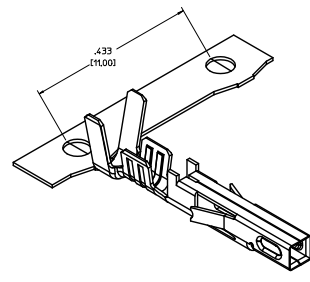
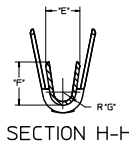
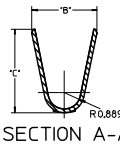
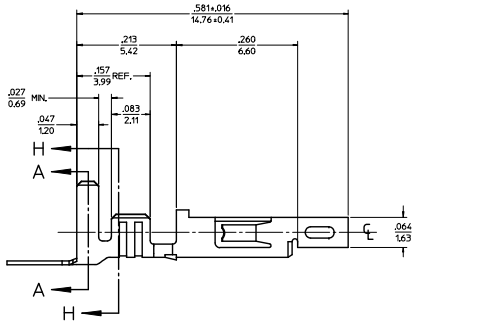
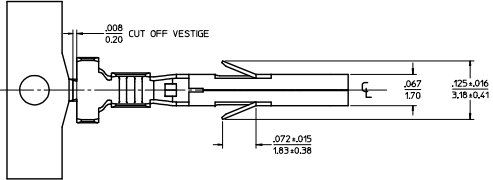
[Molex Connector Corporation](#)

[0457501211](#)

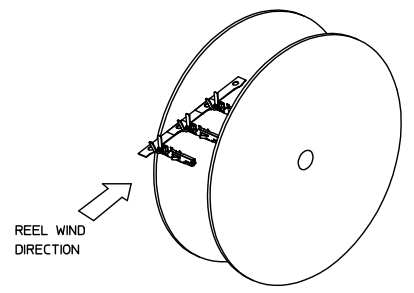
For any questions, you can email us directly:

sales@integrated-circuit.com

ITEM NO.	FORM	WIRE GAGE	DIM 'B'	DIM 'C'	DIM 'D'	DIM 'E'	DIM 'F'	DIM 'G'	PLATING: SEE NOTE 2
45750111	CHAIN		.142±.012 (3.60±0.30)	.177±.016 (4.50±0.40)	.035 (0.90)	-.075±.012 (1.90±0.30)	.091±.016 (2.30±0.40)	.020 (0.50)	1 TIN OVER NICKEL
45750112	LOOSE	18-20							
45750311	CHAIN		.142±.012 (3.60±0.30)	.177±.016 (4.50±0.40)	.035 (0.90)	.091±.012 (2.30±0.30)	.106±.016 (2.70±0.40)	.024 (0.60)	2 SELECT GOLD OVER NICKEL
45750312	LOOSE	16							
45750211	CHAIN		.142±.012 (3.60±0.30)	.177±.016 (4.50±0.40)	.035 (0.90)	-.075±.012 (1.90±0.30)	.091±.016 (2.30±0.40)	.020 (0.50)	2 SELECT GOLD OVER NICKEL
45750212	LOOSE	18-20							
45750321	CHAIN		.142±.012 (3.60±0.30)	.177±.016 (4.50±0.40)	.035 (0.90)	.091±.012 (2.30±0.30)	.106±.016 (2.70±0.40)	.024 (0.60)	2 SELECT GOLD OVER NICKEL
45750322	LOOSE	16							



- NOTES:**
- MATERIAL: COPPER ALLOY .0080(0.203) THICK
 - FINISH:
 - .000100(0.00254) MIN. BRIGHT TIN OVER .000050(0.00127) MIN NICKEL OVERALL.
 - .000030(0.00076) MIN. SELECT GOLD IN CONTACT AREA AND .000100(0.00254) MIN. SELECT MATTE TIN IN CRIMP AREA OVER .000050(0.00127) MIN. NICKEL OVERALL.
 GOLD PLATING RECOMMENDED FOR APPLICATIONS WHERE FRETTING CORROSION IS A CONCERN.
 - PRODUCT SPECIFICATION: PS-45750-001
 - PACKAGING SPECIFICATION: PK-45750-001 FOR CHAIN TERMINALS
PK-5556-003 FOR LOOSE TERMINALS
 - TERMINAL FOR USE WITH 5557, 42474, 44516, 43760, AND 30067 SERIES HOUSINGS.
 - WHEN TERMINALS ARE INSTALLED IN THE HOUSING, THE WIRES ARE TO BE DRESSED IN SUCH A MANNER TO ALLOW THE TERMINALS TO FLOAT FREELY IN THE POCKET.
 - THIS TERMINAL IS DESIGNED FOR SINGLE WIRE CRIMPING.



RoHS COMPLIANT

UPDATE: CSO DIM REC NO. LEF2014-4406 G3 CHOKREDDI APPROVAL: 2015/07/17 (DATE)	QUALITY SYMBOLS	GENERAL TOLERANCES (UNLESS SPECIFIED)	DISPENSE STYLE IN/MM	SCALE 10:1	DESIGN UNITS INCH	THIRD ANGLE PROJECTION
	4 PLACES ±.000 3 PLACES ±.010 2 PLACES ±.025 1 PLACE ±.036 0 PLACE ±.	mm INCH ±.010 ±.014 ±.	DRAWN BY SML DATE 2004/01/30 CHECKED BY DATE APPROVED BY DATE	MATERIAL NO. SEE CHART ANGLULAR ±1/2° DRAFT WHERE APPLICABLE MUST REMAIN WITHIN DIMENSIONS	TITLE FEMALE CRIMP TERMINAL, H.C.S.PLUS, MINI-FIT JR. SERIES molex	DOCUMENT NO. SD-45750-001 SHEET NO. 1 OF 1
	INCORPORATED AND SHOULD NOT BE USED WITHOUT WRITTEN PERMISSION					
	THIS DRAWING CONTAINS INFORMATION THAT IS PROPRIETARY TO MOLEX					